

F.A.P. RTE.	SECTION	COUNTY	TOTAL SHEETS	SHEET NO.
600	60-(30,31,128)-1	MADISON/ST. CLAIR	399	1

ILLINOIS CONTRACT NO. 76830  
\* 399+16 = 405

STATE OF ILLINOIS

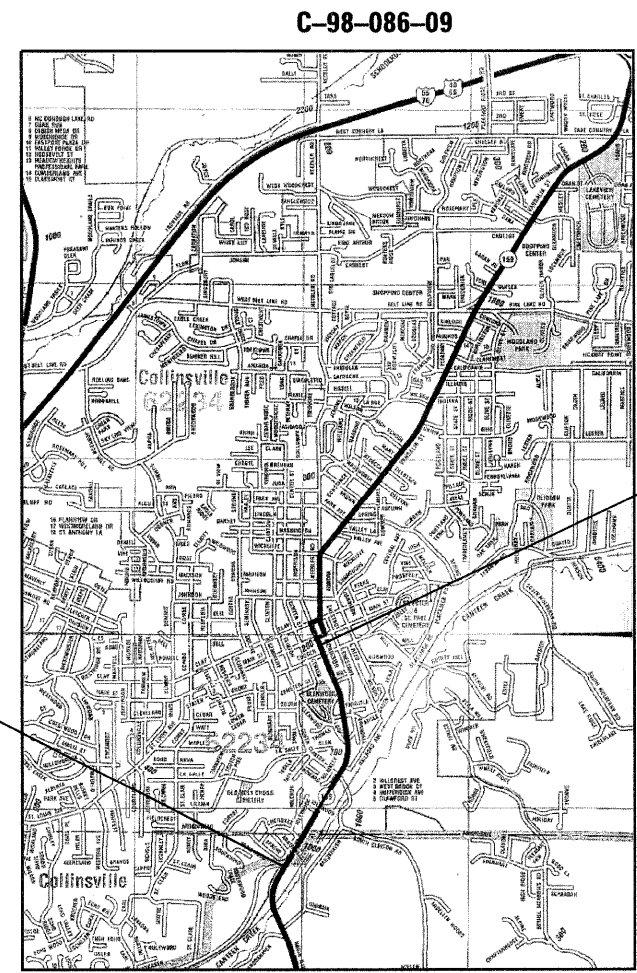
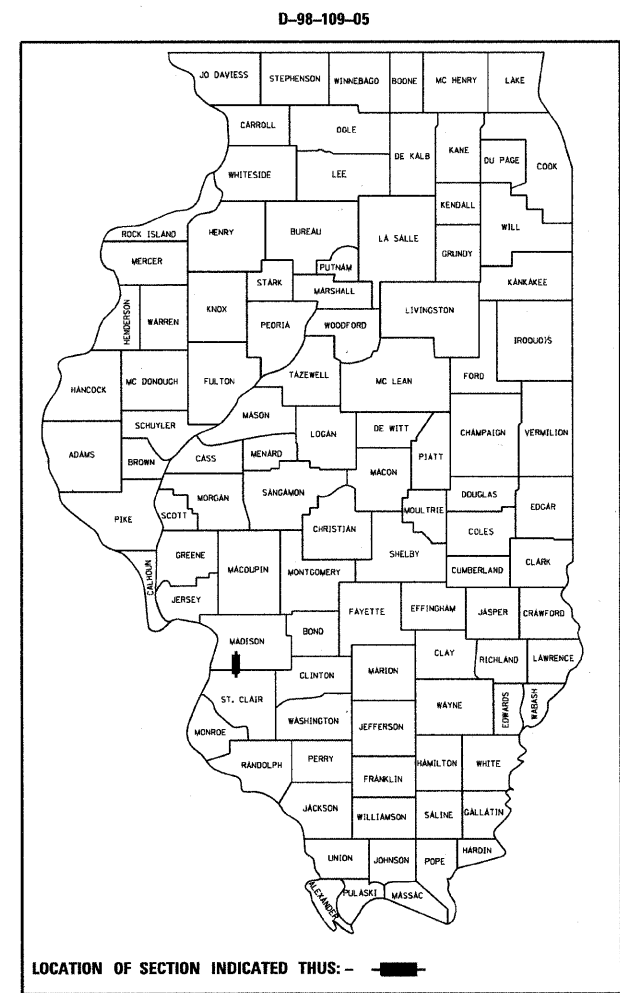
DEPARTMENT OF TRANSPORTATION  
DIVISION OF HIGHWAYS

**PROPOSED  
HIGHWAY PLANS**

FAP ROUTE 600 (IL 159)  
SECTION 60-(30,31,128)-1  
FEDERAL PROJECT # **ACNHF-0600(060)**  
WIDENING AND RESURFACING  
MADISON AND ST. CLAIR COUNTIES

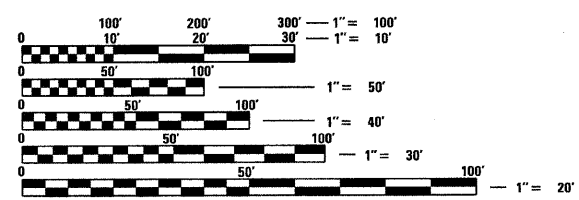
FOR INDEX OF SHEETS, SEE SHEET NO. 2

DESIGN DESIGNATION: OTHER PRINCIPLE ARTERIAL



**LOCATION MAP**  
SCALE: 1" = 2000'

GROSS LENGTH = 5402 FT. = 1.02 MILE  
NET LENGTH = 5402 FT. = 1.02 MILE



FULL SIZE PLANS HAVE BEEN PREPARED USING STANDARD ENGINEERING SCALES. REDUCED SIZED PLANS WILL NOT CONFORM TO STANDARD SCALES. IN MAKING MEASUREMENTS ON REDUCED PLANS, THE ABOVE SCALES MAY BE USED.

J.U.L.I.E.  
JOINT UTILITY LOCATION INFORMATION FOR EXCAVATION  
1-800-892-0123  
OR 811

PROJECT ENGINEER: PATTI LEBEAU (618) 346-3179  
PROJECT MANAGER: CHERYL KEPLAR (618) 346-3186

CONTRACT NO. 76830

END PROJECT  
STA 156+02.00  
LAT = 38.6705  
LONG = -89.9898



SIGNATURE: *[Signature]* DATE: 8/21/09  
SHEETS: 136-147B, 227-23B  
LICENSE EXPIRES: 11/30/09

STATE OF ILLINOIS  
DEPARTMENT OF TRANSPORTATION  
DIVISION OF HIGHWAYS

SUBMITTED *October 15 2009*

*Mary C. Jamie*  
DEPUTY DIRECTOR OF HIGHWAYS, REGION 5 ENGINEER

*January 29 2010*  
*Scott B. Smith P.E. J.E.*  
ACTING ENGINEER OF DESIGN AND ENVIRONMENT

*January 29 2010*  
*Christine M. Reed J.E.*  
DIRECTOR OF HIGHWAYS, CHIEF ENGINEER

PLANS PREPARED BY:  
VOLKERT  
103 LANTER COURT  
COLLINSVILLE, IL 62234

**PRINTED BY THE AUTHORITY  
OF THE STATE OF ILLINOIS**