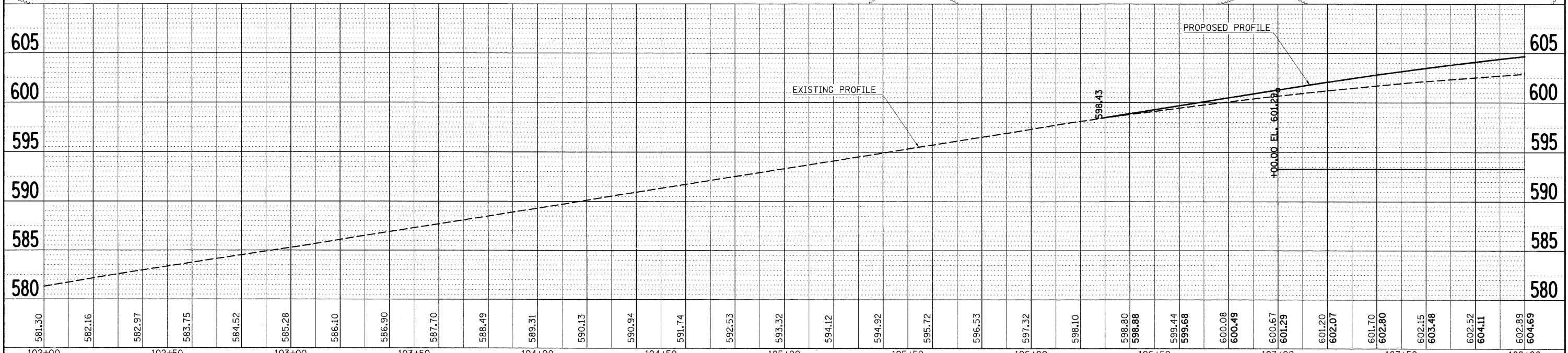
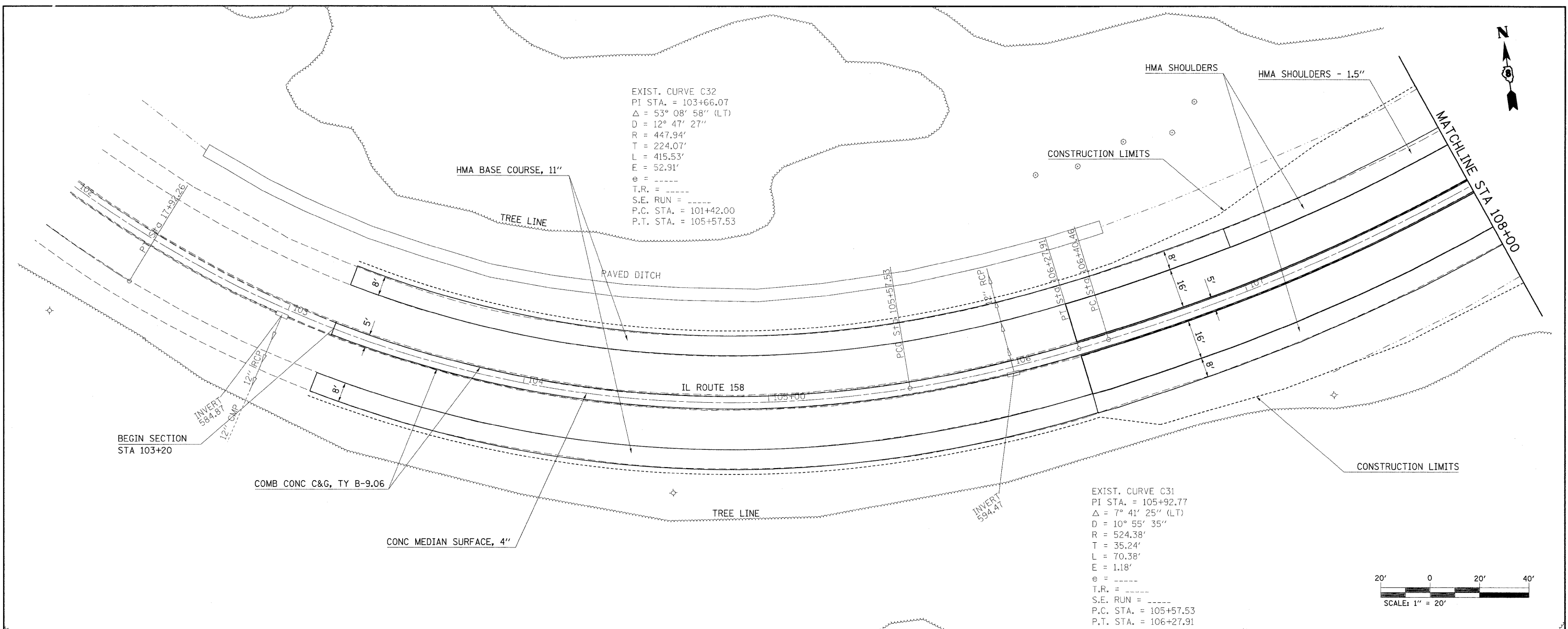


PLAN	SURVEYED	BY	DATE
	ALIGNED		
	NOTE BOOK		
	NO.		
	FILE NAME		

PROFILE	SURVEYED	BY	DATE
	GRADES CHECKED		
	BLM. NOTED		
	STRUCTURE NOTATIONS CHECKED		
	NO.		

EXIST. CURVE C32
 PI STA. = 103+66.07
 $\Delta = 53^\circ 08' 58''$ (LT)
 $D = 12^\circ 47' 27''$
 $R = 447.94'$
 $T = 224.07'$
 $L = 415.53'$
 $E = 52.91'$
 $e = \text{---}$
 $T.R. = \text{---}$
 $S.E. RUN = \text{---}$
 $P.C. STA. = 101+42.00$
 $P.T. STA. = 105+57.53$

EXIST. CURVE C31
 PI STA. = 105+92.77
 $\Delta = 7^\circ 41' 25''$ (LT)
 $D = 10^\circ 55' 35''$
 $R = 524.38'$
 $T = 35.24'$
 $L = 70.38'$
 $E = 1.18'$
 $e = \text{---}$
 $T.R. = \text{---}$
 $S.E. RUN = \text{---}$
 $P.C. STA. = 105+57.53$
 $P.T. STA. = 106+27.91$



FILE NAME =	USER NAME = owerbj	DESIGNED -	REVISED -	STATE OF ILLINOIS DEPARTMENT OF TRANSPORTATION	PLAN AND PROFILE	F.A.P. RTE.	SECTION	COUNTY	TOTAL SHEETS	SHEET NO.
ct:\pw\work\p\WIDOT\OWENBJ\dms52558\pin0206\p1.dgn	DRAWN -	REVISED -	809			67-IHBR	MONROE	144	16	
PLOT SCALE = 20.0000' / IN.	CHECKED -	REVISED -	CONTRACT NO. 76977							
PLOT DATE = 12/18/2009	DATE -	REVISED -	FED. ROAD DIST. NO. ILLINOIS FED. AID PROJECT							