

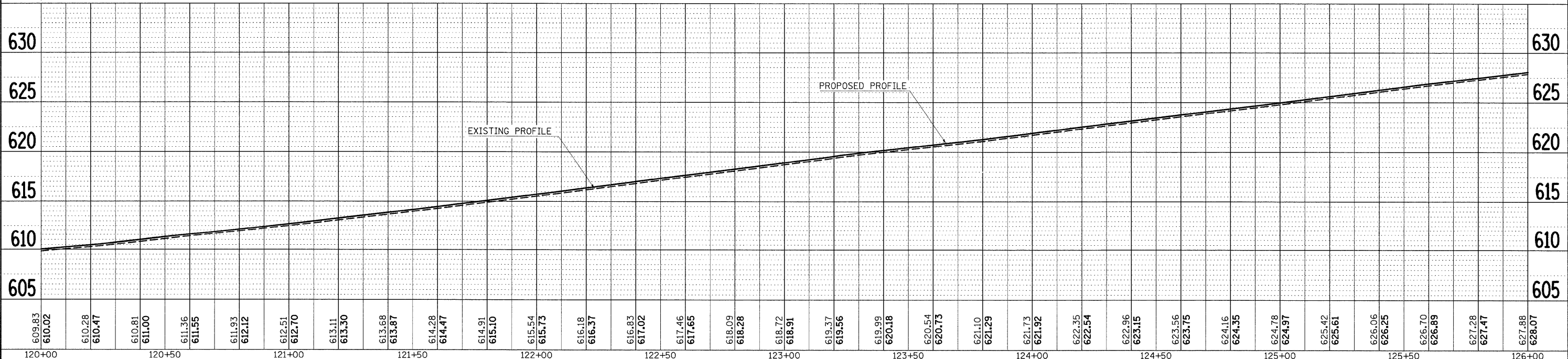
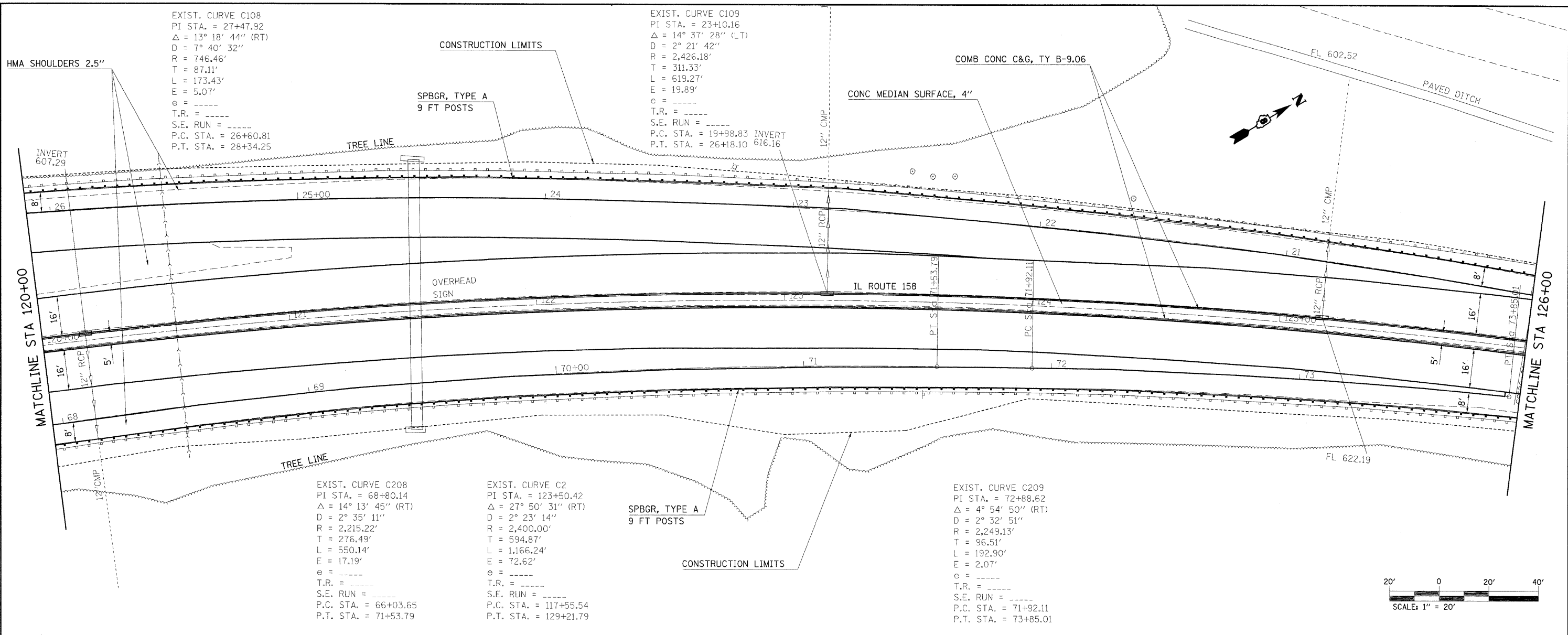
EXIST. CURVE C108
 PI STA. = 27+47.92
 $\Delta = 13^\circ 18' 44''$ (RT)
 $D = 7^\circ 40' 32''$
 $R = 746.46'$
 $T = 87.11'$
 $L = 173.43'$
 $E = 5.07'$
 $e =$
 $T.R. =$
 $S.E. RUN =$
 $P.C. STA. = 26+60.81$
 $P.T. STA. = 28+34.25$

EXIST. CURVE C109
 PI STA. = 23+10.16
 $\Delta = 14^\circ 37' 28''$ (LT)
 $D = 2^\circ 21' 42''$
 $R = 2,426.18'$
 $T = 311.33'$
 $L = 619.27'$
 $E = 19.89'$
 $e =$
 $T.R. =$
 $S.E. RUN =$
 $P.C. STA. = 19+98.83$
 $P.T. STA. = 26+18.10$
 INVERT 616.16

EXIST. CURVE C208
 PI STA. = 68+80.14
 $\Delta = 14^\circ 13' 45''$ (RT)
 $D = 2^\circ 35' 11''$
 $R = 2,215.22'$
 $T = 276.49'$
 $L = 550.14'$
 $E = 17.19'$
 $e =$
 $T.R. =$
 $S.E. RUN =$
 $P.C. STA. = 66+03.65$
 $P.T. STA. = 71+53.79$

EXIST. CURVE C2
 PI STA. = 123+50.42
 $\Delta = 27^\circ 50' 31''$ (RT)
 $D = 2^\circ 23' 14''$
 $R = 2,400.00'$
 $T = 594.87'$
 $L = 1,166.24'$
 $E = 72.62'$
 $e =$
 $T.R. =$
 $S.E. RUN =$
 $P.C. STA. = 117+55.54$
 $P.T. STA. = 129+21.79$

EXIST. CURVE C209
 PI STA. = 72+88.62
 $\Delta = 4^\circ 54' 50''$ (RT)
 $D = 2^\circ 32' 51''$
 $R = 2,249.13'$
 $T = 96.51'$
 $L = 192.90'$
 $E = 2.07'$
 $e =$
 $T.R. =$
 $S.E. RUN =$
 $P.C. STA. = 71+92.11$
 $P.T. STA. = 73+85.01$



PLAN	SURVEYED	DATE
	ALIGNED	BY
	CHECKED	
	RT. OF WAY	
	CHECKED	
	NO.	
	FILE NAME	

PROFILE	SURVEYED	DATE
	GRADES	BY
	CHECKED	
	B.M. NOTED	
	NO.	
	STRUCTURE	
	NOTATIONS	
	CHRD	

FILE NAME =	USER NAME = owenbj	DESIGNED -	REVISED -	STATE OF ILLINOIS DEPARTMENT OF TRANSPORTATION	PLAN AND PROFILE	F.A.P. RTE.	SECTION	COUNTY	TOTAL SHEETS	SHEET NO.
c:\pw_work\PW\DOT\OWENBJ\dms52558\p1n206961.dgn		DRAWN -	REVISED -			809	67-IHR	MONROE	144	19
PLOT SCALE = 20.0000' / IN.		CHECKED -	REVISED -			CONTRACT NO. 76977				
PLOT DATE = 12/10/2009		DATE -	REVISED -			FED. ROAD DIST. NO. ILLINOIS FED. AID PROJECT				
		SCALE:	SHEET NO.	OF	SHEETS	STA.	TO STA.			