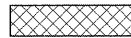





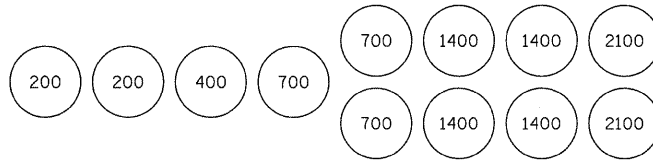
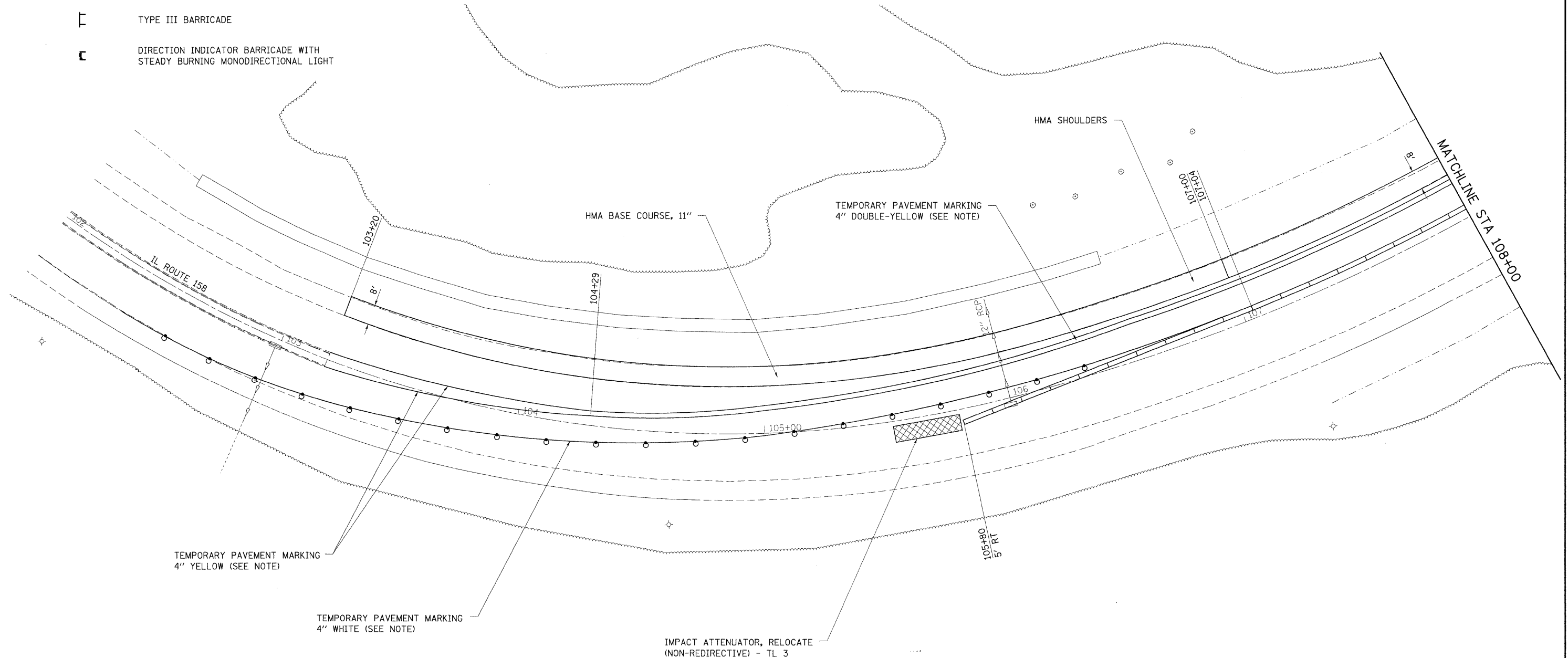


LEGEND

-  IMPACT ATTENUATOR
-  TEMPORARY CONCRETE BARRIER
-  BARRELS WITH STEADY BURNING LIGHT
-  TEMPORARY BRIDGE TRAFFIC SIGNALS
-  TYPE III BARRICADE
-  DIRECTION INDICATOR BARRICADE WITH STEADY BURNING MONODIRECTIONAL LIGHT



SAND MODULE IMPACT ATTENUATOR LAYOUT  
(IF OPTION USED)



SEQUENCE OF CONSTRUCTION - STAGE II:

RELOCATE 1000 FT OF TEMPORARY CONCRETE BARRIER AND RELOCATE 2 EACH IMPACT ATTENUATORS.

REMOVE TRAFFIC SIGNALS AND STAGE 1 TEMPORARY PAVEMENT MARKING.

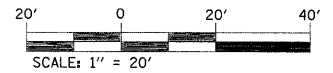
SEE STANDARD 701431 FOR DETAILS NOT SHOWN ON PLANS.

PERFORM ALL NECESSARY BRIDGE WORK IN STAGE I WORK ZONE.

PLACE "HMA BINDER COURSE" ON EB LANES AND "HMA SHOULDER" SOUTH SIDE OF ROADWAY BEHIND STAGE II BARRIER.

NOTE:

TEMPORARY PAVEMENT MARKING PLACEMENT AND REMOVAL SHALL BE INCLUDED IN THE COST OF "TRAFFIC CONTROL AND PROTECTION, STANDARD 701431 (SPECIAL)".



PLAN	DATE
SURVEYED	BY
NOTE BOOK	NO.
ALIGNMENT CHECKED	
RT. OF WAY CHECKED	
ADD FILE NAME	

PROFILE	DATE
SURVEYED	BY
GRADES CHECKED	
S.M. NOTED	
STRUCTURE NOTATIONS CHECKED	
NOTE BOOK	NO.

FILE NAME =	USER NAME = owerbj	DESIGNED -	REVISED -
c:\pwwork\pwwork\ownerbj\dms52558\stg2009.dgn		DRAWN -	REVISED -
		CHECKED -	REVISED -
		DATE -	REVISED -

STATE OF ILLINOIS  
DEPARTMENT OF TRANSPORTATION

STAGE II CONSTRUCTION

SCALE:	SHEET NO.	OF	SHEETS	STA.	TO STA.
--------	-----------	----	--------	------	---------

F.A.P. RTE.	SECTION	COUNTY	TOTAL SHEETS	SHEET NO.
809	67-IHBR	MONROE	144	31
CONTRACT NO. 76977				
FED. ROAD DIST. NO. ILLINOIS FED. AID PROJECT				