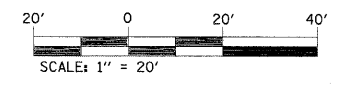
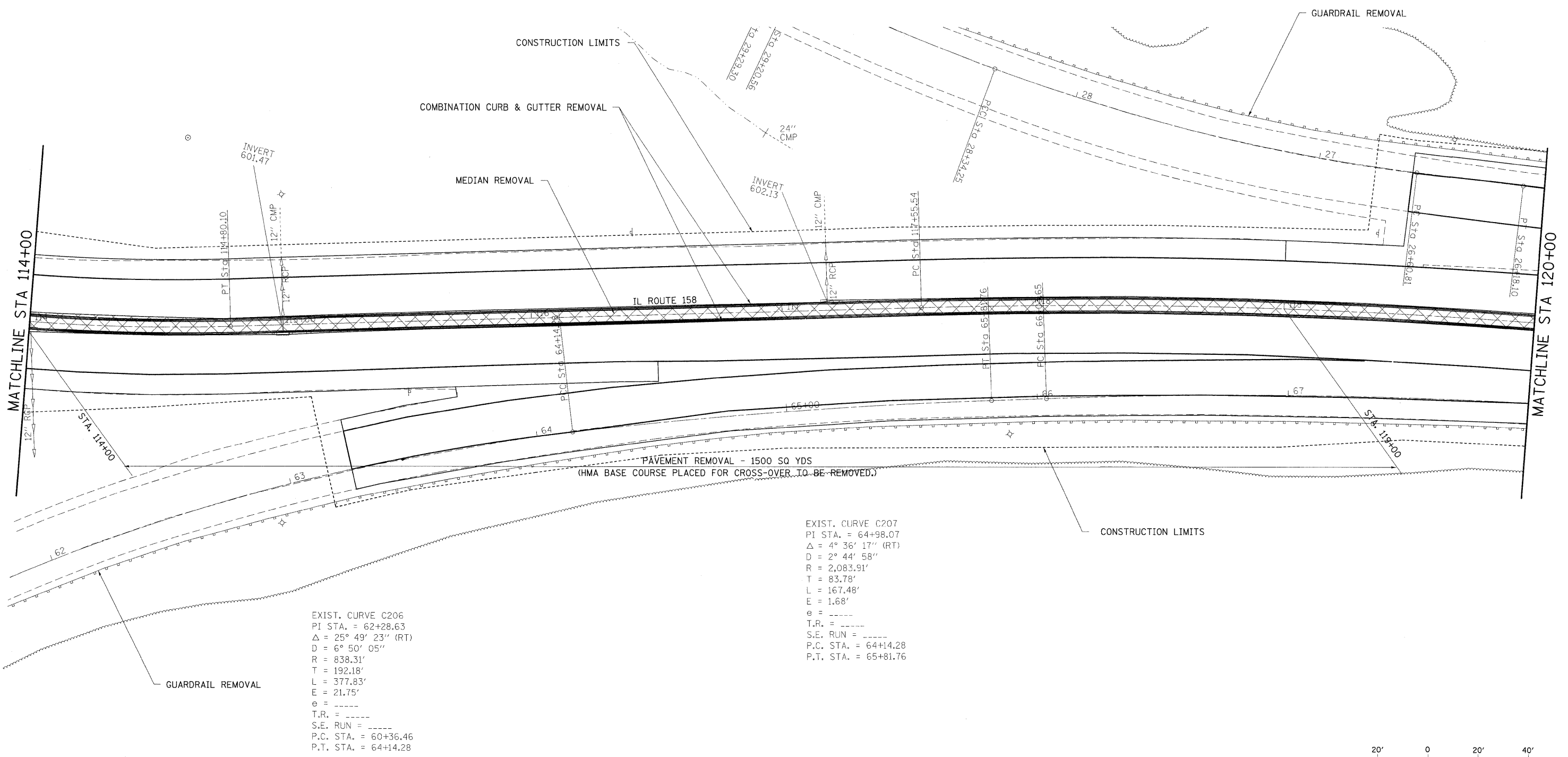


EXIST. CURVE C108
 PI STA. = 27+47.92
 $\Delta = 13^\circ 18' 44''$ (RT)
 D = 7° 40' 32"
 R = 746.46'
 T = 87.11'
 L = 173.43'
 E = 5.07'
 e = -----
 T.R. = -----
 S.E. RUN = -----
 P.C. STA. = 26+60.81
 P.T. STA. = 28+34.25



FILE NAME =	USER NAME = owenbj	DESIGNED -	REVISED -	STATE OF ILLINOIS DEPARTMENT OF TRANSPORTATION	REMOVAL PLAN			F.A.P. RTE.	SECTION	COUNTY	TOTAL SHEETS	SHEET NO.
ct:\pw_work\pwsdot\owenbj\dms52558\p1n00306.dgn	PLOT SCALE = 20.0000' / IN.	DRAWN -	REVISED -					809	67-1HBR	MONROE	144	45
PLOT DATE = 12/10/2009	DATE -	CHECKED -	REVISED -		CONTRACT NO. 76977							
		DATE -	REVISED -		FED. ROAD DIST. NO.	ILLINOIS FED. AID PROJECT						
				SCALE:	SHEET NO.	OF	SHEETS	STA. TO STA.				