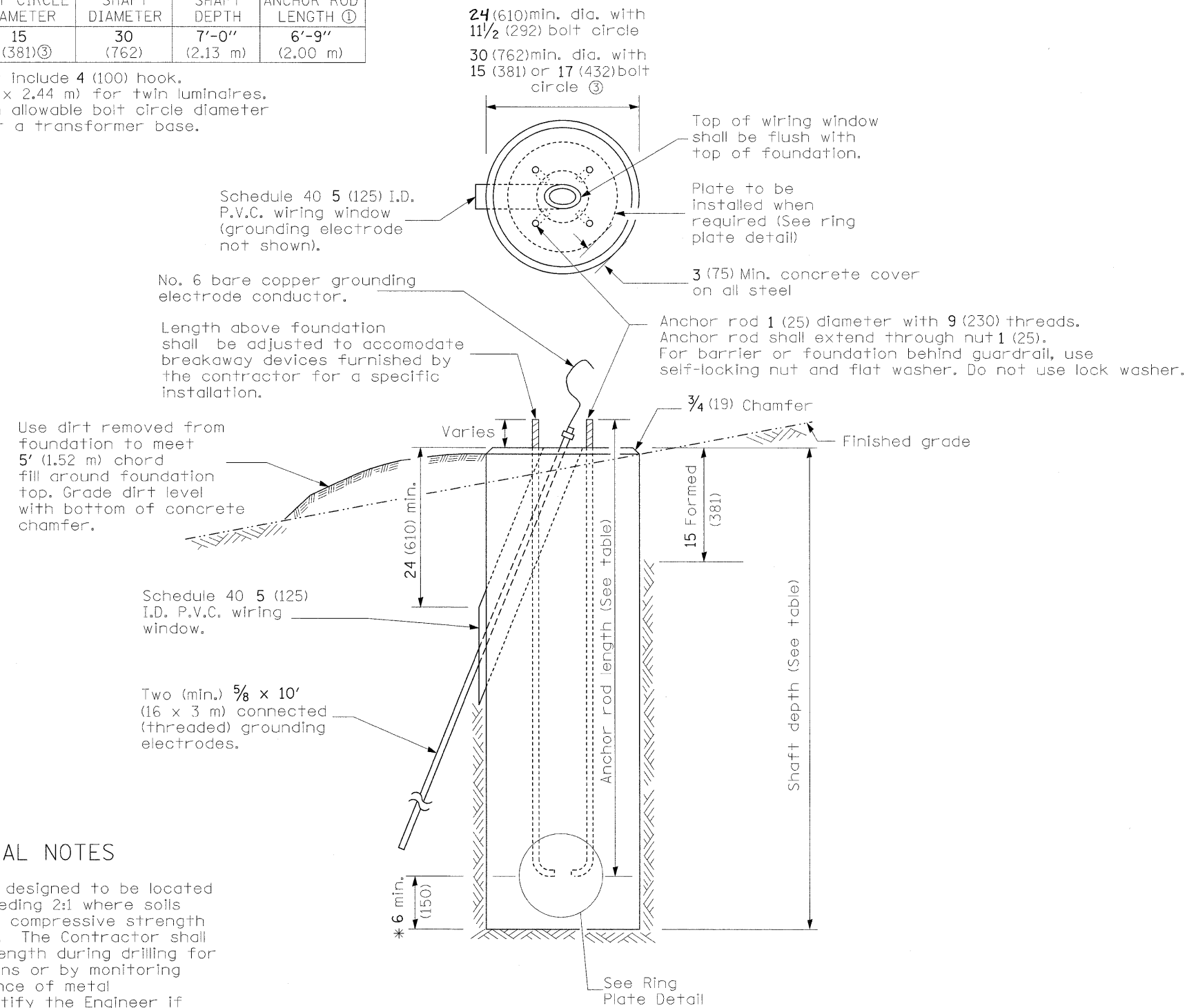


CONCRETE FOUNDATION				
LIGHT POLE MOUNTING HEIGHT	BOLT CIRCLE DIAMETER	SHAFT DIAMETER	SHAFT DEPTH	ANCHOR ROD LENGTH ①
46'-50' (14.0 m - 15.2 m)	15 (381)③	30 (762)	7'-0" (2.13 m)	6'-9" (2.00 m)

- ① Length does not include 4 (100) hook.
- ② $8\frac{5}{8} \times 8'-0"$ (220 x 2.44 m) for twin luminaires.
- ③ Use the maximum allowable bolt circle diameter (typ. 17(430)) for a transformer base.



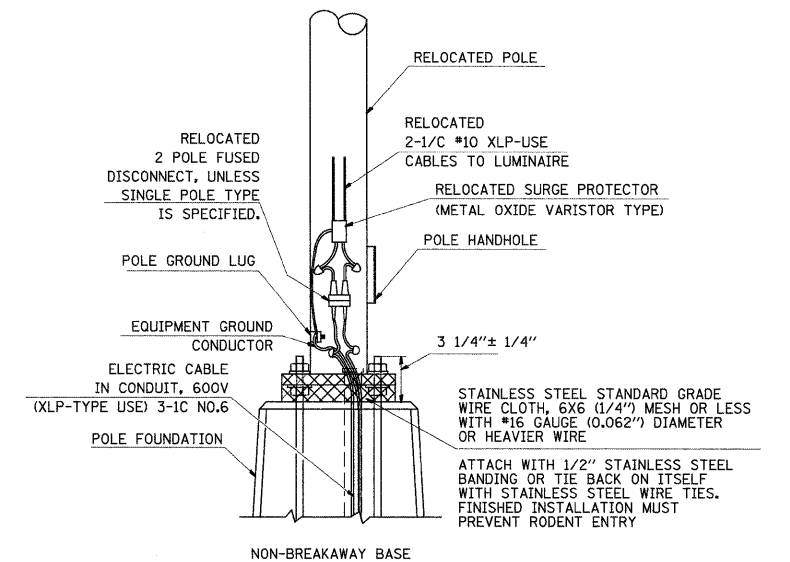
* If the required anchor rod length above top of foundation is less than 3 (75), anchor rods may be lowered below 6 (150).

CONCRETE FOUNDATION

GENERAL NOTES

All foundations are designed to be located on slopes not exceeding 2:1 where soils have an unconfined compressive strength of at least 1.0 TSF. The Contractor shall verify the soil strength during drilling for concrete foundations or by monitoring installation resistance of metal foundations and notify the Engineer if other conditions are encountered.

Anchor rod shall be increased in diameter as needed for 50' (15.2 m) mounting height or above. The Contractor shall match the breakaway device size or slotted hole size in the pole base plate to accommodate larger rod sizes..



POLE BASE MOUNTING & WIRING

FILE NAME =	USER NAME = prestone	DESIGNED -	REVISED -	STATE OF ILLINOIS DEPARTMENT OF TRANSPORTATION	LIGHT POLE FOUNDATION AND POLE BASE MOUNTING & WIRING DETAILS	F.A.P. RTE.	SECTION	COUNTY	TOTAL SHEETS	SHEET NO.
c:\pwork\pwork\DOT\PRESTONE\dms52548\l	ghtIn00606a.dgn	DRAWN -	REVISED -			809	67-1HBR	MADISON	144	64
	PLOT SCALE = 5/8" = 1' / IN.	CHECKED -	REVISED -			CONTRACT NO. 76977				
	PLOT DATE = 12/10/2009	DATE -	REVISED -			FED. ROAD DIST. NO. ILLINOIS FED. AID PROJECT				
SCALE: _____ SHEET NO. _____ OF _____ SHEETS STA. _____ TO STA. _____										