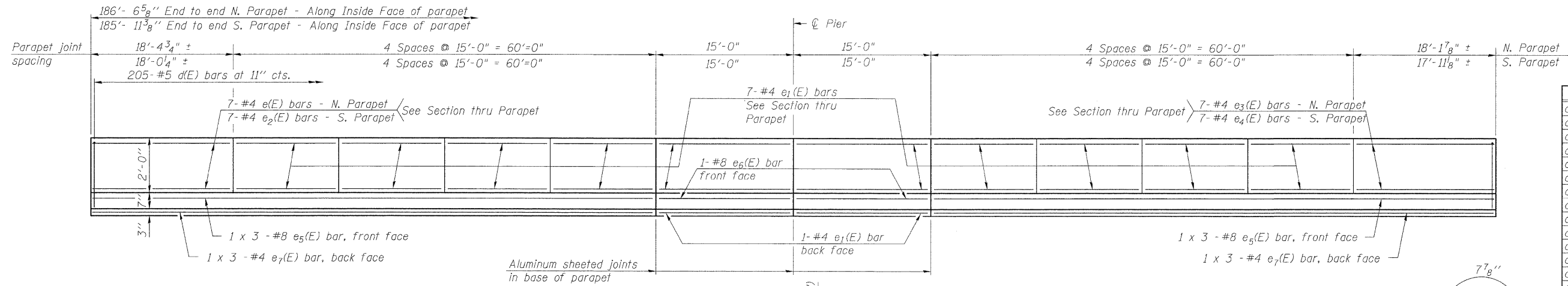


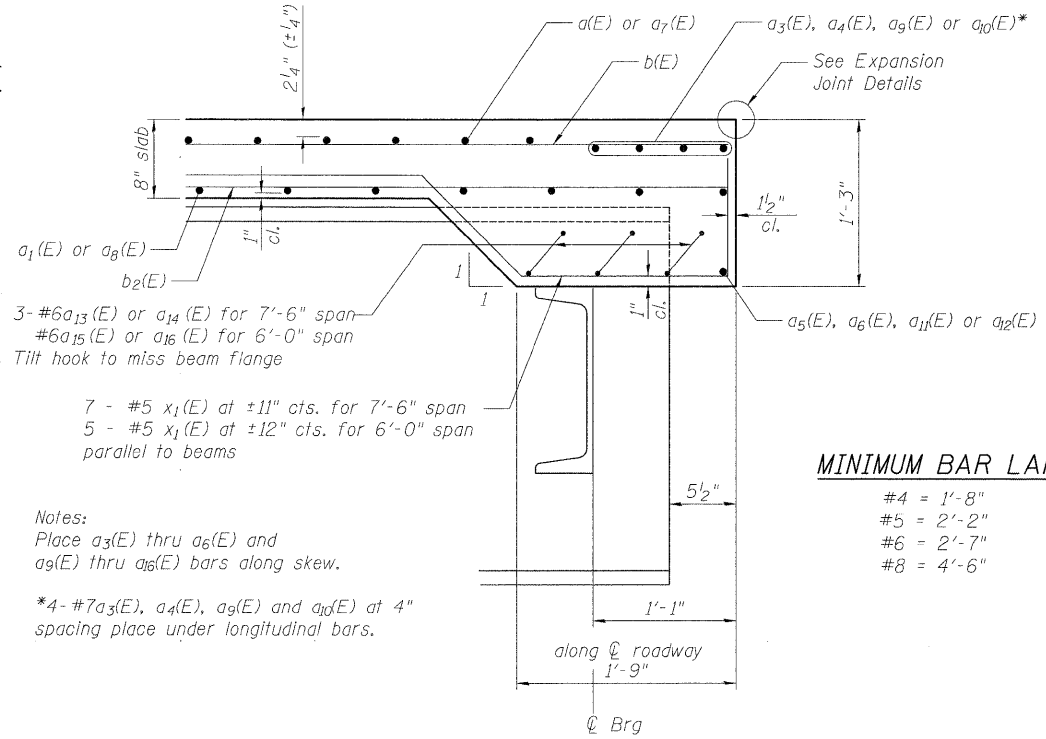
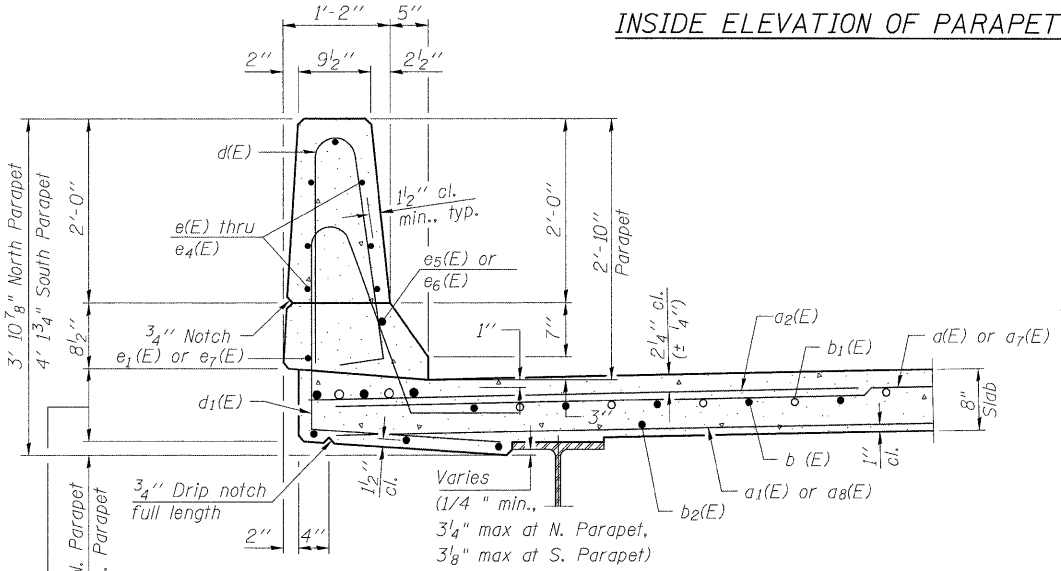
STATE OF ILLINOIS  
DEPARTMENT OF TRANSPORTATION



**SUPERSTRUCTURE  
BILL OF MATERIAL**

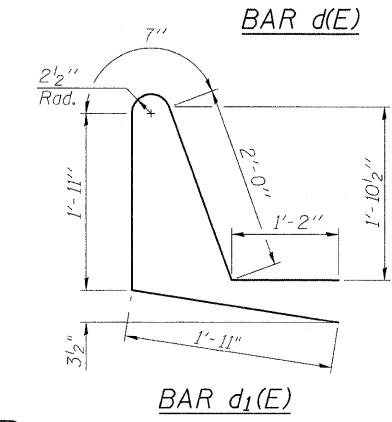
Bar	No.	Size	Length	Shape
a(E)	422	#5	30'-5"	—
a1(E)	266	#5	30'-2"	—
a2(E)	406	#6	6'-0"	—
a3(E)	4	#7	32'-0"	—
a4(E)	4	#7	30'-5"	—
a5(E)	1	#6	31'-10"	—
a6(E)	1	#6	30'-3"	—
a7(E)	401	#5	28'-2"	—
a8(E)	253	#5	27'-11"	—
a9(E)	4	#7	29'-4"	—
a10(E)	4	#7	28'-2"	—
a11(E)	1	#6	29'-2"	—
a12(E)	1	#6	28'-0"	—
a13(E)	18	#6	8'-9"	⌒
a14(E)	18	#6	8'-5"	⌒
a15(E)	3	#6	7'-4"	⌒
a16(E)	3	#6	7'-0"	⌒
b(E)	372	#5	32'-11"	—
b1(E)	58	#6	44'-0"	—
b2(E)	420	#5	28'-6"	—
c1(E)	187	#5	3'-7"	⌒
c2(E)	187	#5	6'-1"	⌒
d(E)	410	#5	5'-7"	⌒
d1(E)	410	#5	7'-7"	⌒
e(E)	7	#4	18'-2"	—
e1(E)	144	#4	14'-9"	—
e2(E)	7	#4	17'-8"	—
e3(E)	7	#4	17'-11"	—
e4(E)	7	#4	17'-9"	—
e5(E)	12	#8	29'-2"	—
e6(E)	4	#8	14'-9"	—
e7(E)	12	#4	27'-3"	—
x1(E)	94	#5	5'-11"	⌒
Reinforcement Bars, Epoxy Coated		Pound	86,500	
Concrete Superstructure		Cu. Yd.	378	

**INSIDE ELEVATION OF PARAPET**

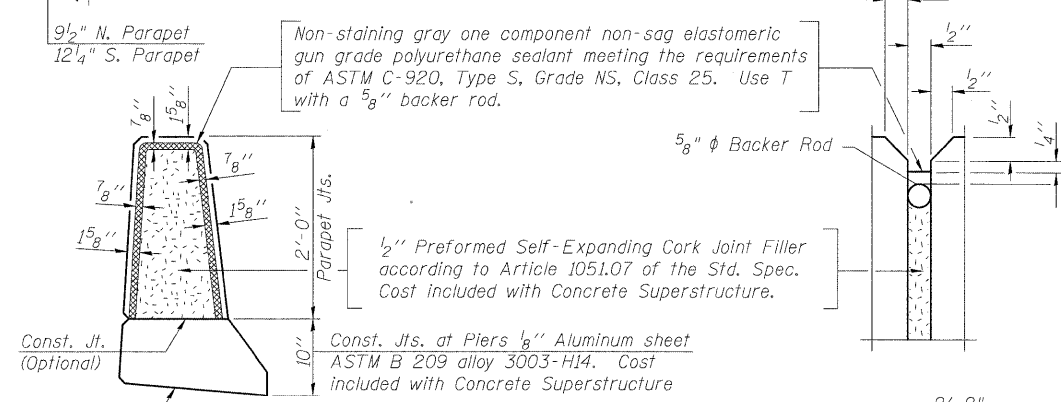


**MINIMUM BAR LAP**

- #4 = 1'-8"
- #5 = 2'-2"
- #6 = 2'-7"
- #8 = 4'-6"



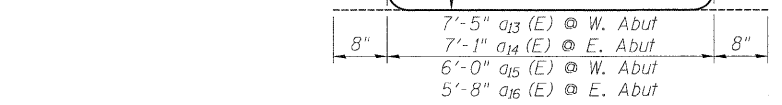
**SECTION THRU PARAPET**



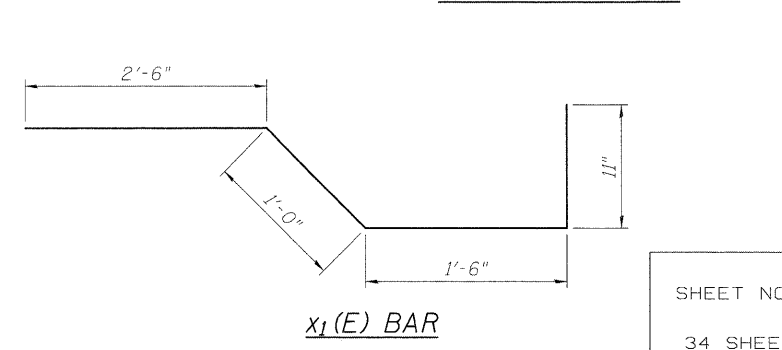
**PARAPET JOINT DETAILS**



**SECTION A-A**



**a3(E) & a4(E) BAR**



**SUPERSTRUCTURE DETAILS  
STRUCTURE NO. 067-0042**

SHEET NO. 11 34 SHEETS	F.A.P. RTE.	SECTION	COUNTY	TOTAL SHEETS	SHEET NO.
	809	67-1HBR	Monroe	144	75
CONTRACT NO. 76977					
FED. ROAD DIST. NO. 7 ILLINOIS FED. AID PROJECT					

- Notes:
1. Bars indicated thus 54 x 6 - #5 etc. indicates 54 line of bars with 6 lengths per line.
  2. Straight bars shall be bent in field to conform to deck radius and or cross slopes as applicable.

DESIGNED - JPM  
CHECKED - CCS  
DRAWN - GAP  
CHECKED - JPM, WPM  
9-28-09

