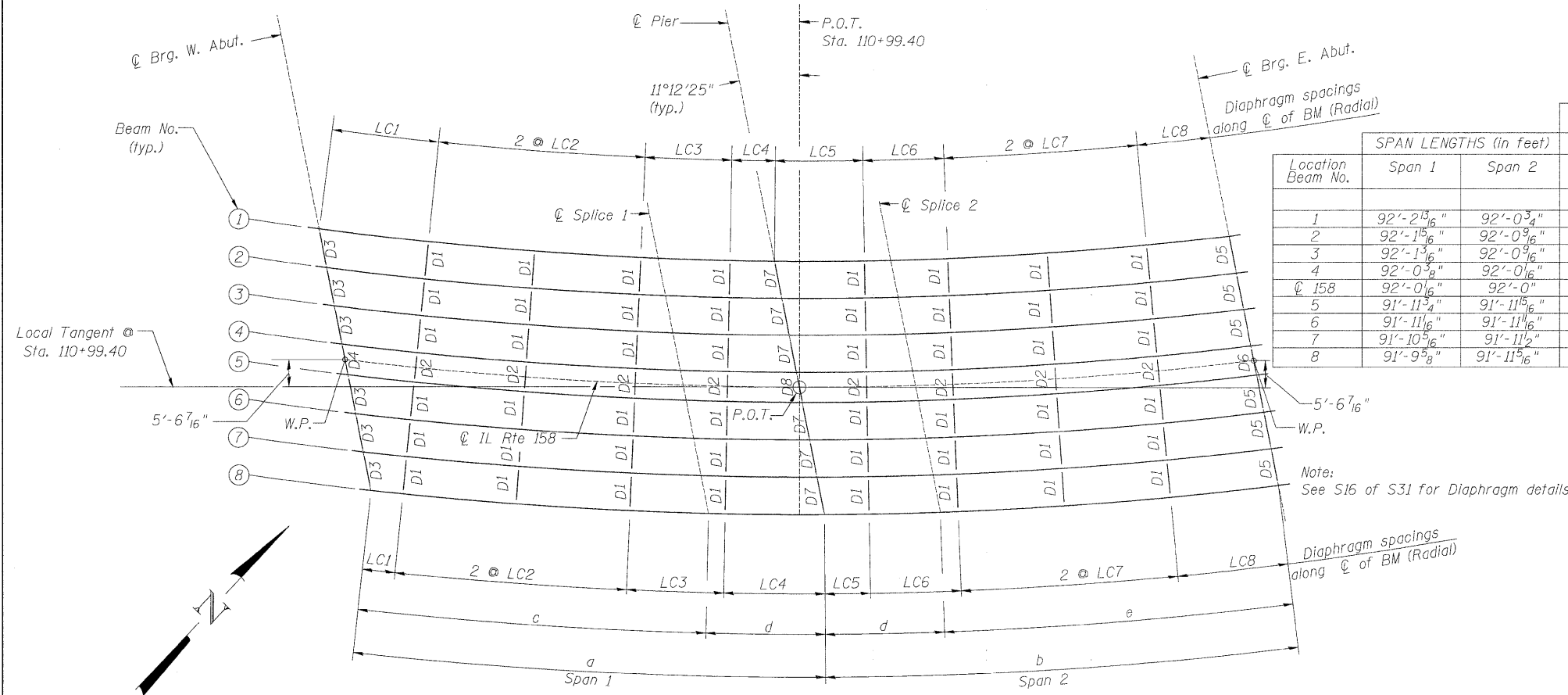


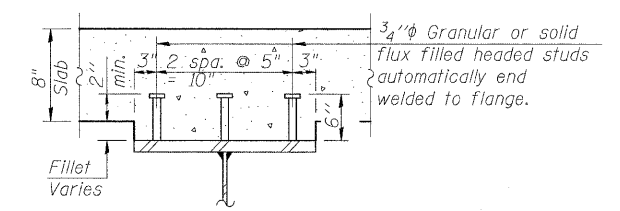
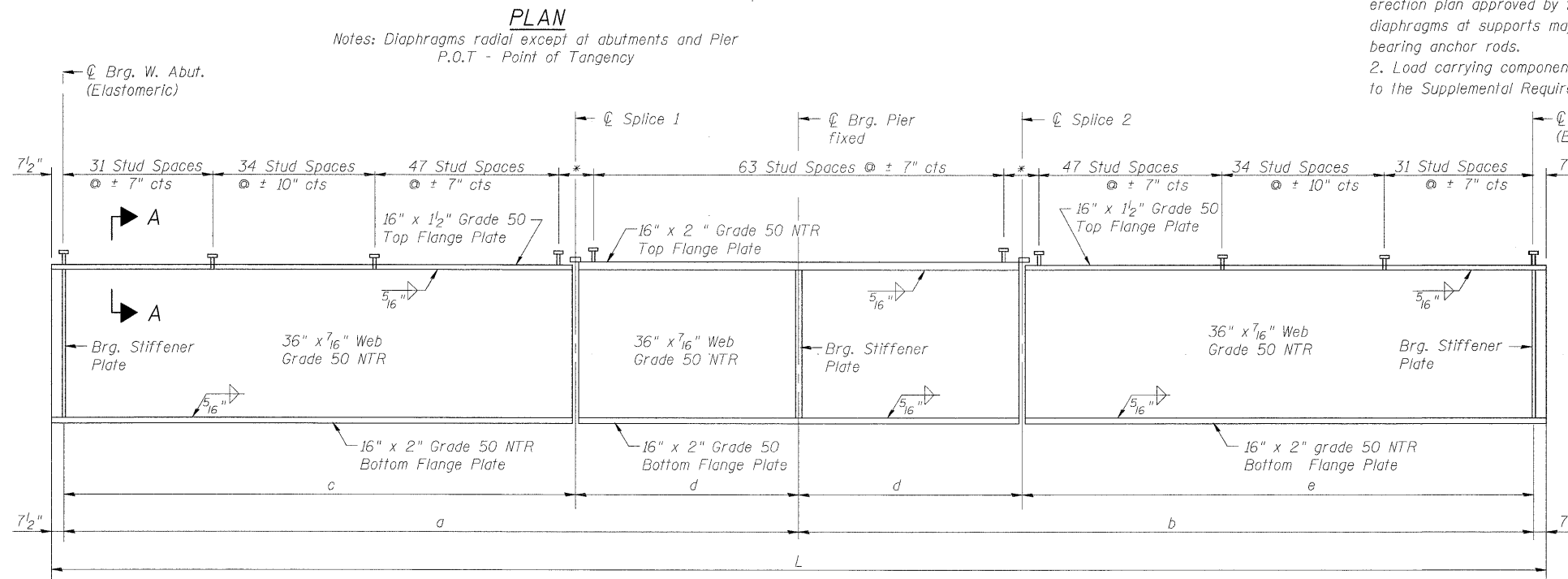
STATE OF ILLINOIS
DEPARTMENT OF TRANSPORTATION



Location Beam No.	SPAN LENGTHS (in feet)		DIAPHRAGM SPACINGS					SPAN 2 (in feet)		
	Span 1	Span 2	SPAN 1 (in feet)					LC6	LC7	LC8
			LC1	LC2	LC3	LC4	LC5			
1	92'-2 ³ / ₁₆ "	92'-0 ³ / ₄ "	22'-2 ³ / ₁₆ "	21'-6"	18'-0"	9'-0"	18'-2 ³ / ₈ "	16'-10 ¹ / ₁₆ "	20'-1 ⁵ / ₁₆ "	16'-9 ³ / ₄ "
2	92'-1 ⁵ / ₁₆ "	92'-0 ⁹ / ₁₆ "	19'-10 ⁵ / ₁₆ "	21'-8 ⁵ / ₈ "	18'-2 ³ / ₁₆ "	10'-7 ⁹ / ₁₆ "	16'-10"	17'-0"	20'-3 ³ / ₄ "	17'-6 ³ / ₄ "
3	92'-1 ³ / ₁₆ "	92'-0 ⁹ / ₁₆ "	17'-7 ⁹ / ₁₆ "	21'-11 ¹ / ₄ "	18'-4 ³ / ₈ "	12'-3 ⁹ / ₁₆ "	15'-5 ⁹ / ₁₆ "	17'-2 ⁹ / ₁₆ "	20'-6 ⁴ / ₁₆ "	18'-3 ¹ / ₁₆ "
4	92'-0 ³ / ₈ "	92'-0 ¹ / ₁₆ "	15'-3 ³ / ₈ "	22'-1 ¹ / ₈ "	18'-6 ⁹ / ₁₆ "	13'-10 ¹ / ₁₆ "	14'-1 ⁵ / ₈ "	17'-4 ³ / ₁₆ "	20'-8 ¹ / ₁₆ "	19'-0 ¹ / ₈ "
5	91'-11 ³ / ₄ "	91'-11 ¹⁵ / ₁₆ "	13'-5 ¹ / ₁₆ "	22'-3 ¹⁵ / ₁₆ "	18'-8 ⁹ / ₁₆ "	15'-2 ⁵ / ₁₆ "	13'-0 ⁵ / ₈ "	17'-5 ⁷ / ₈ "	20'-10 ⁵ / ₈ "	19'-8 ¹ / ₂ "
6	91'-11 ¹ / ₁₆ "	91'-11 ¹ / ₁₆ "	11'-1 ¹ / ₁₆ "	22'-6 ⁹ / ₁₆ "	18'-10 ⁹ / ₁₆ "	16'-9 ⁹ / ₁₆ "	11'-8 ¹ / ₁₆ "	17'-7 ⁹ / ₁₆ "	21'-1 ¹ / ₁₆ "	20'-5 ¹ / ₁₆ "
7	91'-10 ⁹ / ₁₆ "	91'-11 ¹ / ₂ "	8'-9 ³ / ₄ "	22'-9 ³ / ₁₆ "	19'-0 ³ / ₄ "	18'-5 ³ / ₈ "	10'-4 ³ / ₁₆ "	17'-9 ⁵ / ₁₆ "	21'-3 ⁹ / ₁₆ "	21'-2 ⁴ / ₁₆ "
8	91'-9 ⁵ / ₈ "	91'-11 ⁵ / ₁₆ "	6'-6 ⁵ / ₈ "	22'-11 ¹ / ₁₆ "	19'-2 ¹ / ₁₆ "	20'-0 ¹ / ₁₆ "	9'-0"	18'-0"	21'-6"	21'-11 ⁵ / ₁₆ "

Beam No.	Radius	a	b	c	d	e	L
1	738'-1 ³ / ₁₆ "	92'-2 ³ / ₁₆ "	92'-0 ³ / ₄ "	73'-9 ¹ / ₁₆ "	18'-5"	73'-7 ³ / ₄ "	185'-6 ⁹ / ₁₆ "
2	745'-7 ³ / ₁₆ "	92'-1 ⁵ / ₁₆ "	92'-0 ⁹ / ₁₆ "	73'-8 ⁵ / ₁₆ "	18'-5"	73'-7 ⁹ / ₁₆ "	185'-5 ¹ / ₂ "
3	753'-1 ³ / ₁₆ "	92'-1 ³ / ₁₆ "	92'-0 ⁹ / ₁₆ "	73'-8 ³ / ₁₆ "	18'-5"	73'-7 ⁵ / ₁₆ "	185'-4 ¹ / ₂ "
4	760'-7 ³ / ₁₆ "	92'-0 ³ / ₈ "	92'-0 ¹ / ₁₆ "	73'-7 ³ / ₁₆ "	18'-5"	73'-7 ¹ / ₁₆ "	185'-3 ⁷ / ₁₆ "
5	766'-7 ³ / ₁₆ "	91'-11 ³ / ₄ "	91'-11 ¹⁵ / ₁₆ "	73'-6 ³ / ₁₆ "	18'-5"	73'-6 ⁵ / ₁₆ "	185'-2 ¹ / ₁₆ "
6	774'-1 ³ / ₁₆ "	91'-11 ¹ / ₁₆ "	91'-11 ¹ / ₁₆ "	73'-6 ¹ / ₁₆ "	18'-5"	73'-6 ¹ / ₁₆ "	185'-1 ³ / ₄ "
7	781'-7 ³ / ₁₆ "	91'-10 ⁹ / ₁₆ "	91'-11 ¹ / ₂ "	73'-5 ⁹ / ₁₆ "	18'-5"	73'-6 ² / ₁₆ "	185'-0 ¹ / ₁₆ "
8	789'-1 ³ / ₁₆ "	91'-9 ⁵ / ₈ "	91'-11 ⁵ / ₁₆ "	73'-4 ⁵ / ₈ "	18'-5"	73'-6 ⁵ / ₁₆ "	184'-11 ⁵ / ₁₆ "

- Notes:
- All cross frames or diaphragms between beams or girders shall be installed with erection pins and bolts in accordance with the erection plan approved by the Engineer. Individual cross frames or diaphragms at supports may be temporarily disconnected to install bearing anchor rods.
 - Load carrying components designated "NTR" shall conform to the Supplemental Requirements for Notch Toughness, Zone 2.



SECTION A-A
(No. reqd. per girder = 870)

FRAMING PLAN
STRUCTURE NO. 067-0042

DESIGNED - JPM
CHECKED - WPM
DRAWN - MD
CHECKED - JPM, CCS



GIRDER ELEVATION
"NTR" denotes plates to which notch toughness requirements are applicable.

* There shall be no Shear Studs within 3" of the centerline of the splice

SHEET NO. 13	F.A.P. RTE. 809	SECTION 67-1HBR	COUNTY Monroe	TOTAL SHEETS 144	SHEET NO. 77
34 SHEETS	FED. ROAD DIST. NO. 7 ILLINOIS		FED. AID PROJECT CONTRACT NO. 76977		