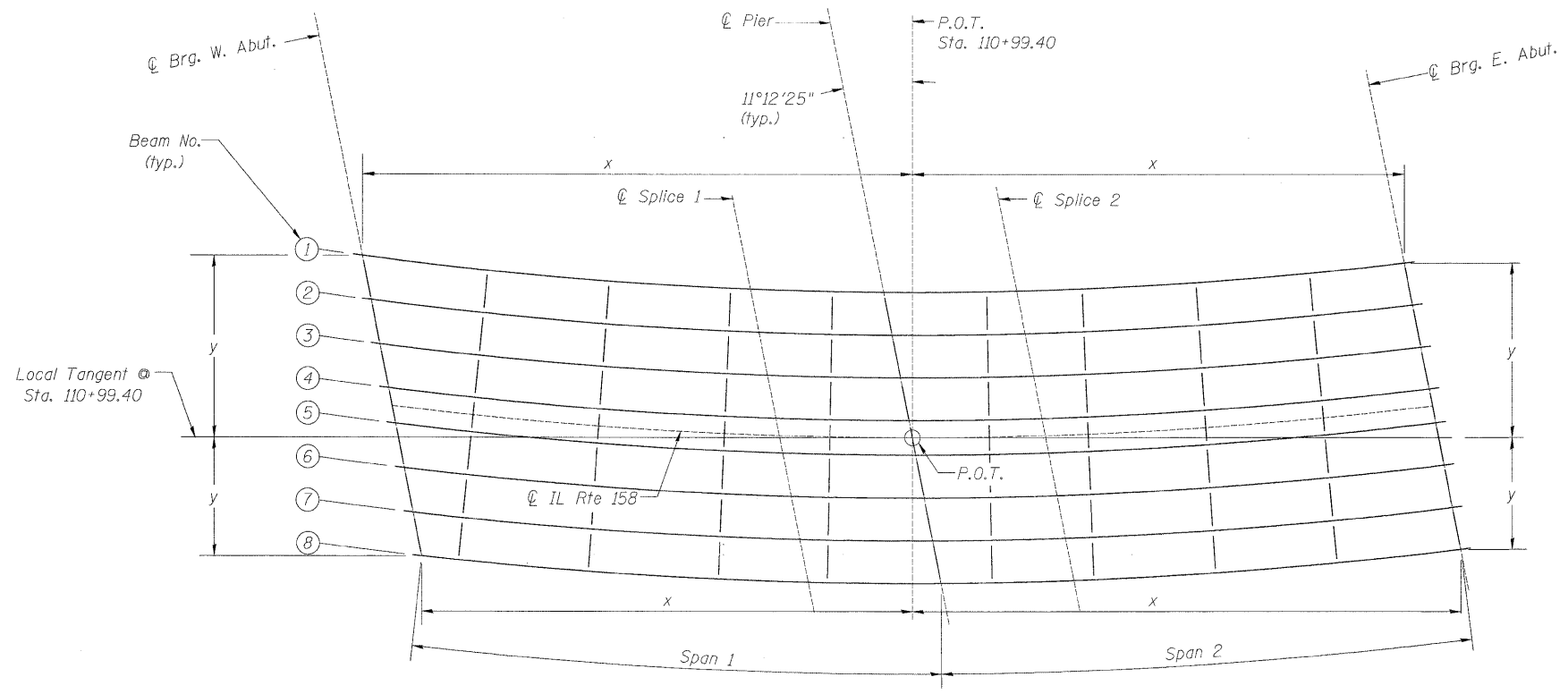


STATE OF ILLINOIS  
DEPARTMENT OF TRANSPORTATION



FRAMING PLAN

Note:  
Diaphragms radial except at abutments and Pier  
P.O.T - Point of Tangency

TOP OF WEB ELEVATIONS (in feet) FOR FABRICATION ONLY					
Location Beam No.	CL Brg. W. Abut.	CL Spl. 1	CL Pier	CL Spl. 2	CL Brg. E.. Abut.
1	605.07	605.16	605.17	605.05	604.55
2	605.69	605.76	605.76	605.65	605.14
3	606.30	606.35	606.36	606.24	605.74
4	606.91	606.95	606.95	606.83	606.33
5	606.91	606.95	606.95	606.82	606.33
6	607.53	607.54	607.54	607.42	606.92
7	608.14	608.14	608.15	608.02	607.51
8	608.75	608.74	608.74	608.61	608.11

GIRDER LAYOUT DIMENSIONS (in feet)										
Beam No.	CL Brg. W. Abut.		CL Spl. 1		CL Pier		CL Spl. 2		CL Brg. E. Abut.	
	x	y	x	y	x	y	x	y	x	y
1	97'-0 <sup>1</sup> / <sub>16</sub> "	31'-10 <sup>13</sup> / <sub>16</sub> "	23'-5 <sup>5</sup> / <sub>8</sub> "	25'-10 <sup>1</sup> / <sub>2</sub> "	5'-0 <sup>1</sup> / <sub>16</sub> "	25'-6 <sup>3</sup> / <sub>16</sub> "	13'-4 <sup>5</sup> / <sub>16</sub> "	25'-7 <sup>7</sup> / <sub>16</sub> "	86'-9 <sup>1</sup> / <sub>16</sub> "	30'-7 <sup>7</sup> / <sub>16</sub> "
2	95'-5 <sup>5</sup> / <sub>16</sub> "	24'-1 <sup>3</sup> / <sub>8</sub> "	21'-11 <sup>13</sup> / <sub>16</sub> "	18'-3 <sup>3</sup> / <sub>8</sub> "	3'-6 <sup>13</sup> / <sub>16</sub> "	18'-0 <sup>1</sup> / <sub>8</sub> "	14'-10 <sup>3</sup> / <sub>16</sub> "	18'-1 <sup>3</sup> / <sub>4</sub> "	88'-3 <sup>1</sup> / <sub>4</sub> "	23'-2 <sup>15</sup> / <sub>16</sub> "
3	93'-11 <sup>3</sup> / <sub>16</sub> "	16'-4 <sup>9</sup> / <sub>16</sub> "	20'-5 <sup>9</sup> / <sub>16</sub> "	10'-9 <sup>3</sup> / <sub>8</sub> "	2'-1"	10'-6 <sup>1</sup> / <sub>16</sub> "	16'-4"	10'-8 <sup>3</sup> / <sub>8</sub> "	89'-8 <sup>3</sup> / <sub>4</sub> "	15'-10 <sup>3</sup> / <sub>8</sub> "
4	92'-4 <sup>3</sup> / <sub>4</sub> "	8'-7 <sup>5</sup> / <sub>8</sub> "	19'-0 <sup>1</sup> / <sub>8</sub> "	3'-2 <sup>1</sup> / <sub>8</sub> "	0'-7 <sup>1</sup> / <sub>8</sub> "	3'-0"	17'-9 <sup>1</sup> / <sub>8</sub> "	3'-2 <sup>1</sup> / <sub>2</sub> "	91'-2 <sup>5</sup> / <sub>16</sub> "	8'-5 <sup>7</sup> / <sub>8</sub> "
CL IL Rte 158	91'-9 <sup>1</sup> / <sub>16</sub> "	5'-6 <sup>1</sup> / <sub>16</sub> "	18'-5"	0'-2 <sup>1</sup> / <sub>16</sub> "	0'-0"	0'-0"	18'-5"	0'-2 <sup>1</sup> / <sub>16</sub> "	91'-9 <sup>1</sup> / <sub>16</sub> "	5'-6 <sup>1</sup> / <sub>16</sub> "
5	91'-2 <sup>1</sup> / <sub>16</sub> "	2'-5 <sup>5</sup> / <sub>16</sub> "	17'-9 <sup>1</sup> / <sub>8</sub> "	2'-9 <sup>1</sup> / <sub>2</sub> "	0'-7 <sup>1</sup> / <sub>8</sub> "	3'-0"	19'-0 <sup>1</sup> / <sub>8</sub> "	2'-9 <sup>1</sup> / <sub>16</sub> "	92'-4 <sup>3</sup> / <sub>8</sub> "	2'-7"
6	89'-7 <sup>5</sup> / <sub>8</sub> "	5'-3 <sup>1</sup> / <sub>2</sub> "	16'-4 <sup>1</sup> / <sub>16</sub> "	10'-3 <sup>15</sup> / <sub>16</sub> "	2'-0 <sup>15</sup> / <sub>16</sub> "	10'-5 <sup>15</sup> / <sub>16</sub> "	20'-5 <sup>15</sup> / <sub>16</sub> "	10'-2 <sup>3</sup> / <sub>4</sub> "	93'-9 <sup>1</sup> / <sub>8</sub> "	4'-9 <sup>1</sup> / <sub>2</sub> "
7	88'-1 <sup>15</sup> / <sub>16</sub> "	13'-0 <sup>3</sup> / <sub>16</sub> "	14'-10 <sup>3</sup> / <sub>16</sub> "	17'-10 <sup>3</sup> / <sub>16</sub> "	3'-6 <sup>3</sup> / <sub>4</sub> "	17'-11 <sup>1</sup> / <sub>16</sub> "	21'-11 <sup>3</sup> / <sub>4</sub> "	17'-8 <sup>5</sup> / <sub>16</sub> "	95'-3 <sup>1</sup> / <sub>16</sub> "	12'-2 <sup>1</sup> / <sub>16</sub> "
8	86'-6 <sup>15</sup> / <sub>16</sub> "	20'-8 <sup>13</sup> / <sub>16</sub> "	13'-4 <sup>3</sup> / <sub>8</sub> "	25'-4 <sup>5</sup> / <sub>8</sub> "	5'-0 <sup>9</sup> / <sub>16</sub> "	25'-5 <sup>13</sup> / <sub>16</sub> "	23'-5 <sup>9</sup> / <sub>16</sub> "	25'-1 <sup>13</sup> / <sub>16</sub> "	96'-8 <sup>15</sup> / <sub>16</sub> "	19'-6 <sup>9</sup> / <sub>16</sub> "

DESIGNED - JPM  
CHECKED - CCS  
DRAWN - MD  
CHECKED - JPM, CCS  
9-28-09



GIRDER DETAILS I  
STRUCTURE NO. 067-0042

SHEET NO. 14 34 SHEETS	F.A.P RTE.	SECTION	COUNTY	TOTAL SHEETS	SHEET NO.
	809	67-1HBR	Monroe	144	78
CONTRACT NO. 76977					
FED. ROAD DIST. NO. 7 ILLINOIS FED. AID PROJECT					