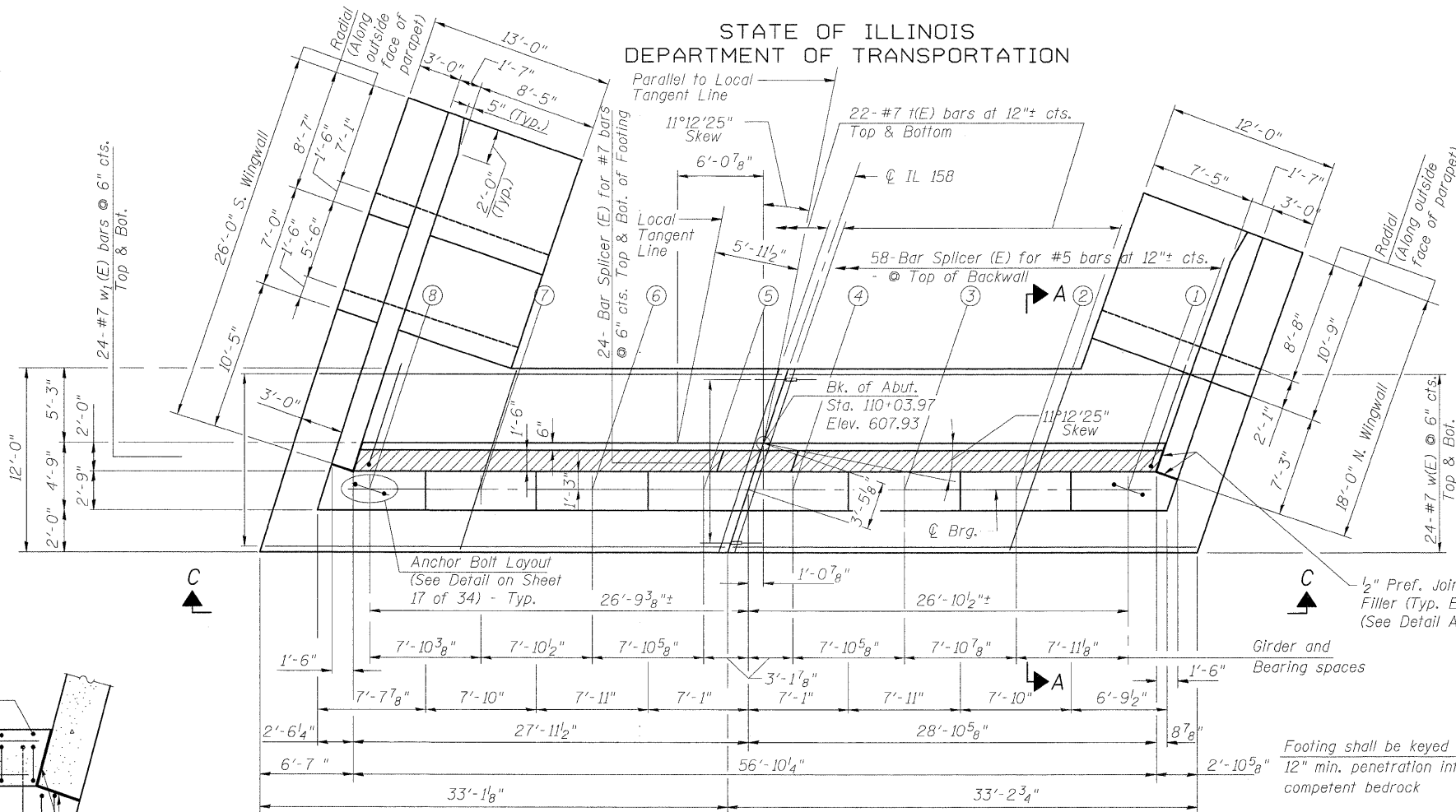


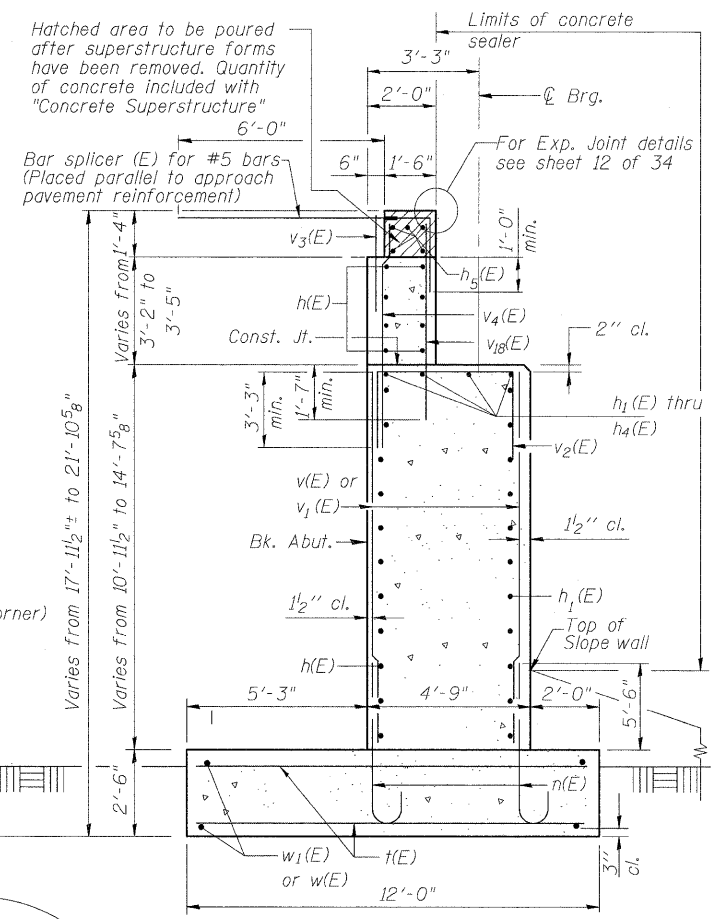
STATE OF ILLINOIS
DEPARTMENT OF TRANSPORTATION

BEARING SEAT ELEV.

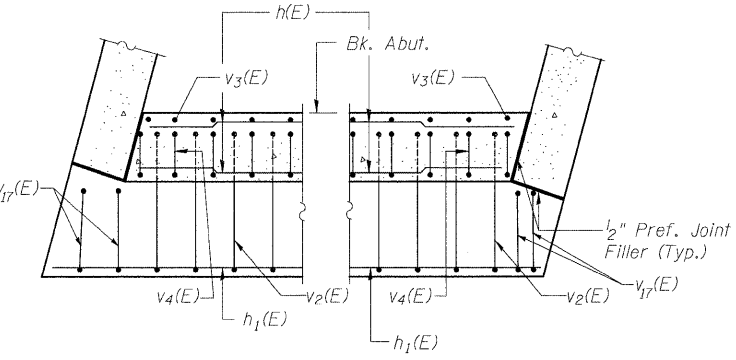
Girder	Elevation
1	601.46
2	602.08
3	602.69
4	603.30
5	603.30
6	603.92
7	604.53
8	605.14



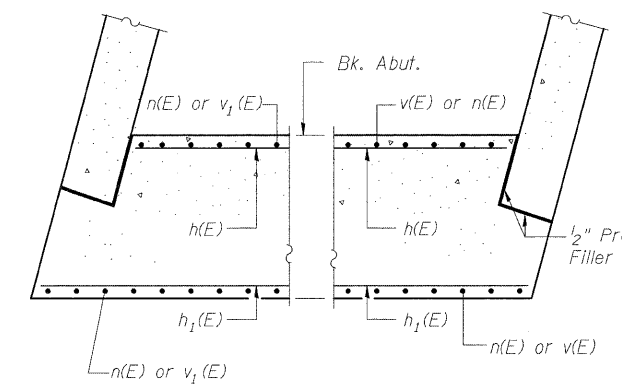
PLAN



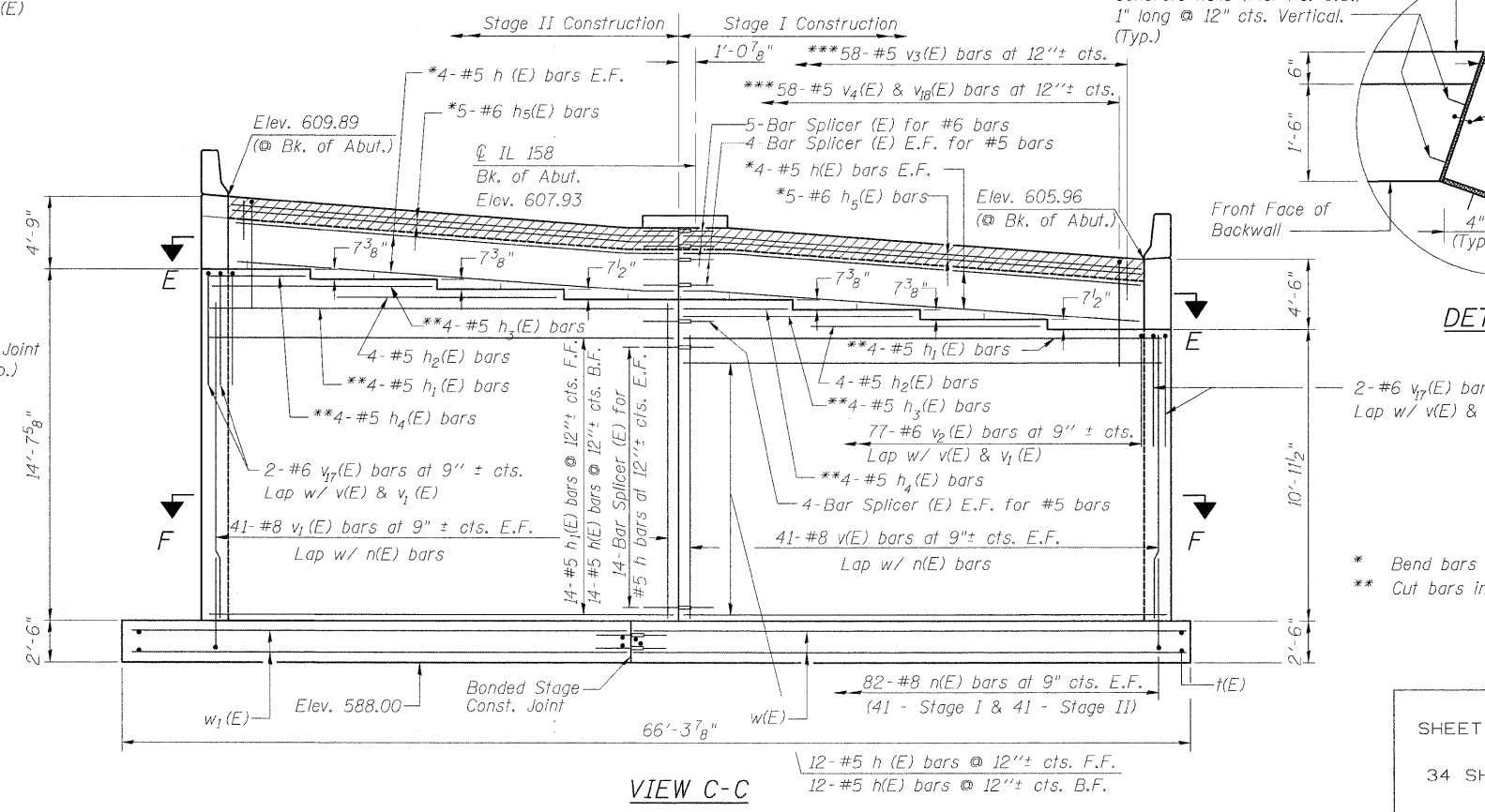
SECTION A-A



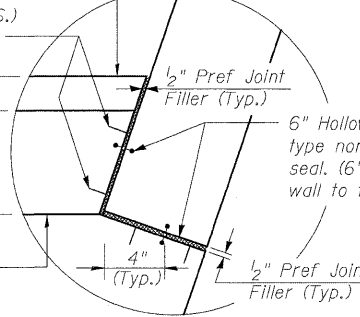
SECTION E-E



SECTION F-F



VIEW C-C



DETAIL A

- Note:
Steps not shown for clarity
1. Backfill shall be placed behind the abutment after the superstructures has been poured and falsework removed. See Article 502.10 of the Standard Specification.
 2. F.F. - Front Face
 3. B.F. - Back Face
 4. E.F. - Each Face
 5. Space reinforcement in cap to miss anchor bolts.
 6. Pour steps monolithically with abutment stem.
 7. For details of reinforcement and Bill of Material, see sheet 22 of 34.
 8. Work this sheet with sheets 19 thru 23 of 34.
 9. Maximum unfactored applied bearing pressure = 6.68 ksf.
 10. If rock excavation is required beyond the limits shown in the plans, the Contractor shall be paid for additional excavation at the unit price bid for Rock Excavation for Structures.

WEST ABUTMENT DETAILS
STRUCTURE NO. 067-0042

DESIGNED - JPM
CHECKED - CCS
DRAWN - JPM
CHECKED - CCS
9-28-09



SHEET NO. 18 34 SHEETS	F.A.P. RTE.	SECTION	COUNTY	TOTAL SHEETS	SHEET NO.
	809	67-1HBR	Monroe	144	82
CONTRACT NO. 76977					
FED. ROAD DIST. NO. 7 ILLINOIS FED. AID PROJECT					