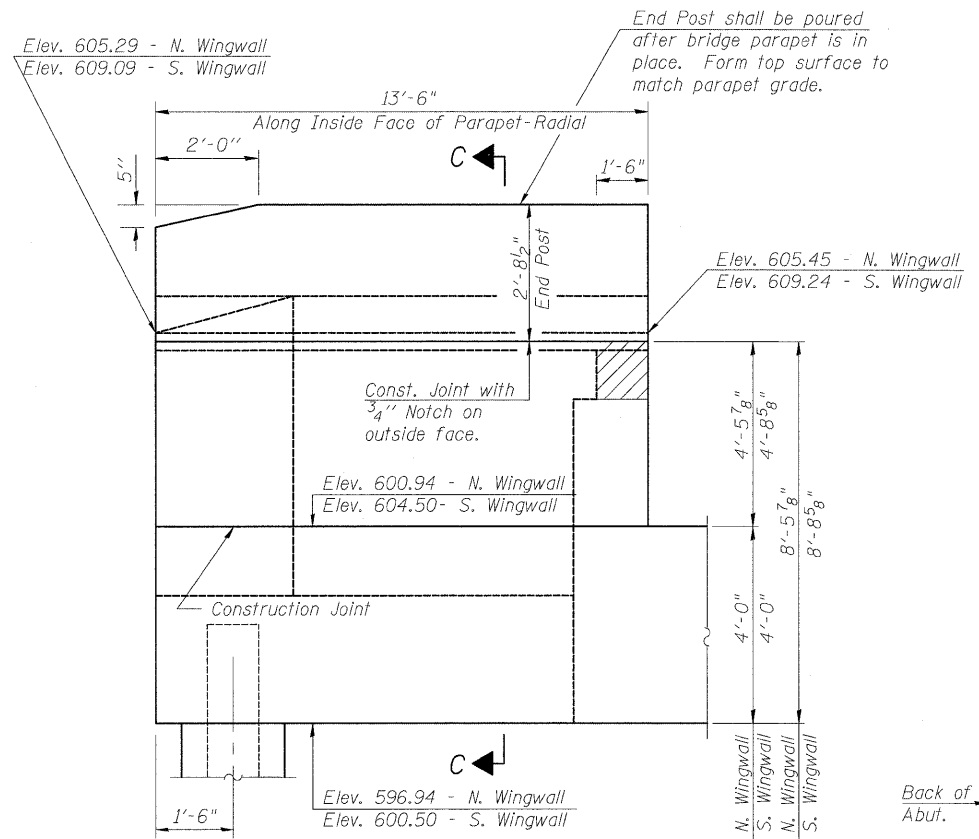
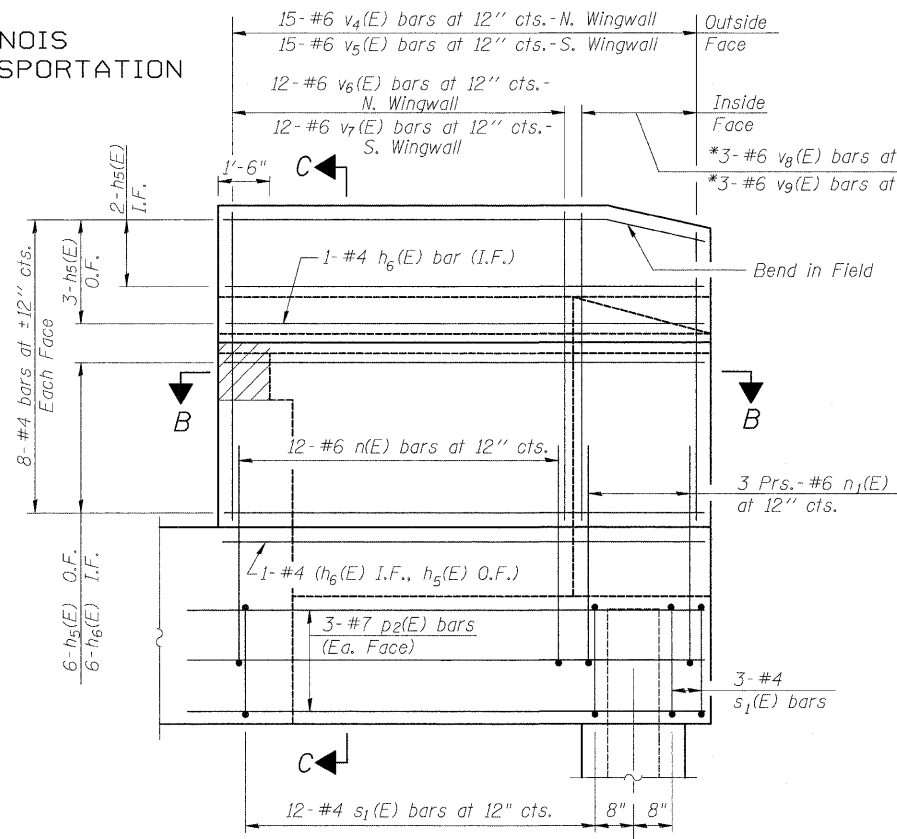


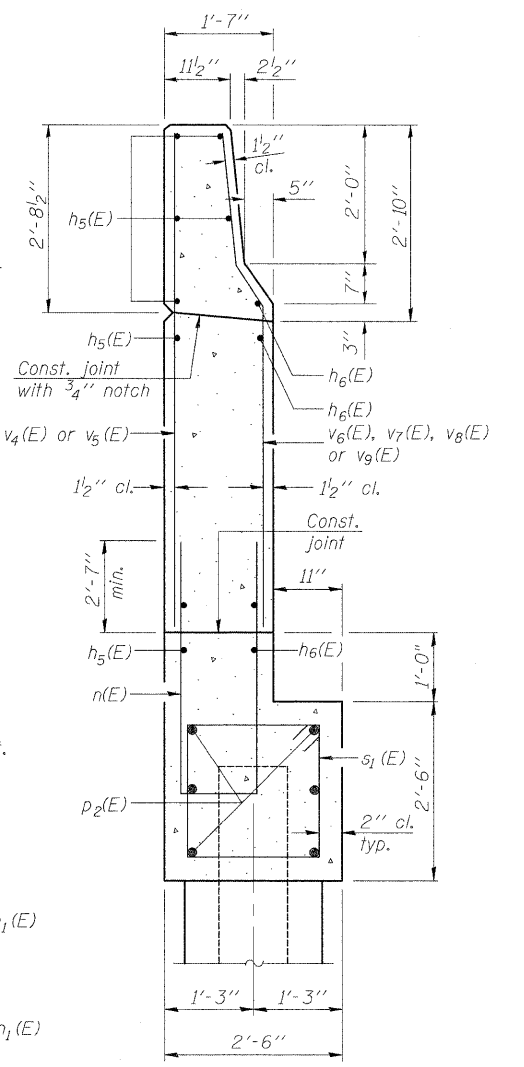
STATE OF ILLINOIS  
DEPARTMENT OF TRANSPORTATION



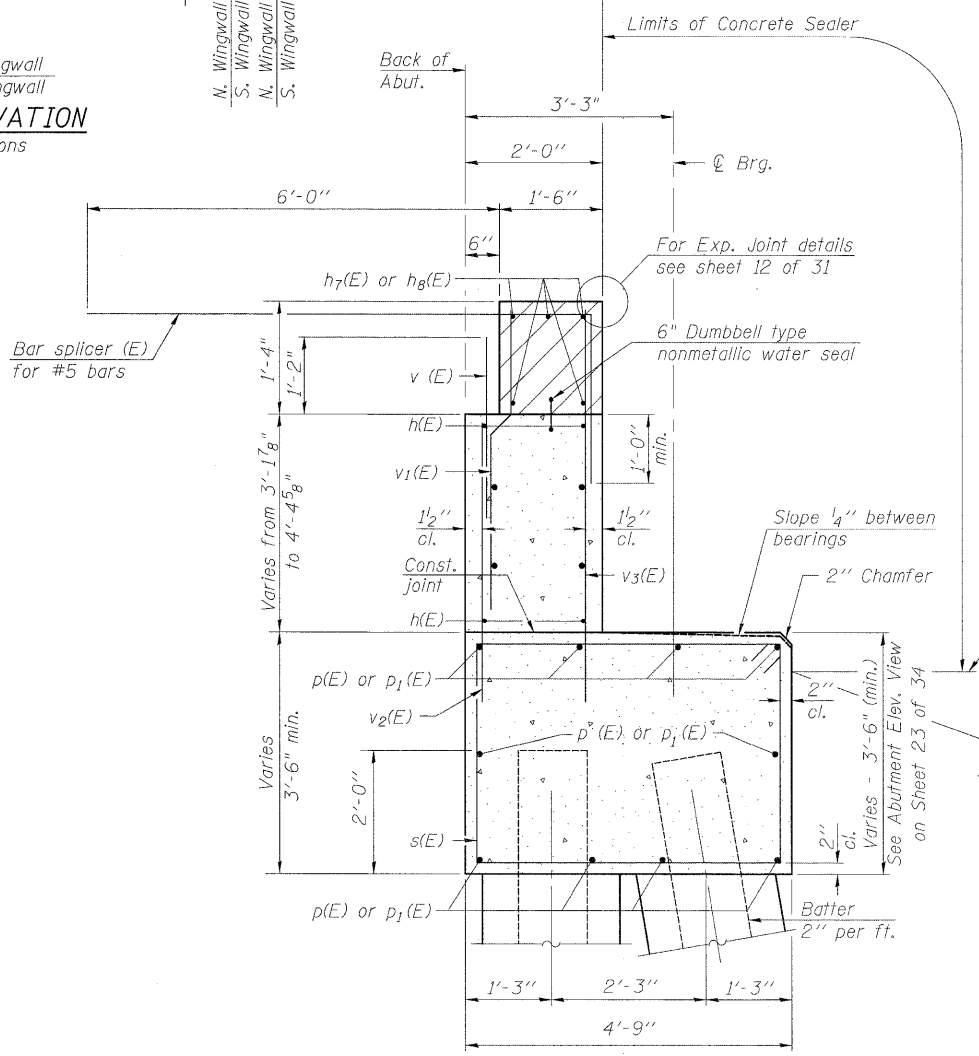
**WING WALL ELEVATION**  
Showing Dimensions



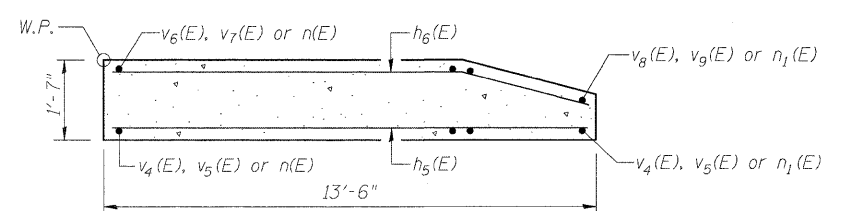
**WING WALL ELEVATION**  
Showing Reinforcement



**SECTION C-C**



**SEC. THRU ABUT.**  
Note: Steps not shown for clarity



**SECTION B-B**

- Notes:
1. Hatched area to be poured after superstructure false work has been removed. Quantity of concrete included with Concrete Superstructure.
  2. Space reinforcement in cap to miss anchor bolts.
  3. Pour steps monolithically with cap.
  4. Quantity of concrete in end post included with Concrete Superstructure on sheet 11 of 34.
  5. For Concrete Encasement details, see sheet 26 of 34.
  6. Work this sheet with sheet 23 of 34.

**EAST ABUTMENT WINGWALL DETAILS**  
**STRUCTURE NO. 067-0042**

DESIGNED - JPM
CHECKED - EHP
DRAWN - MD
CHECKED - JPM, WPM



9-28-09

SHEET NO.24 34 SHEETS	F.A.P. RTE.	SECTION	COUNTY	TOTAL SHEETS	SHEET NO.
	809	67-1HBR	Monroe	144	88
CONTRACT NO. 76977					
FED. ROAD DIST. NO. 7 ILLINOIS FED. AID PROJECT					