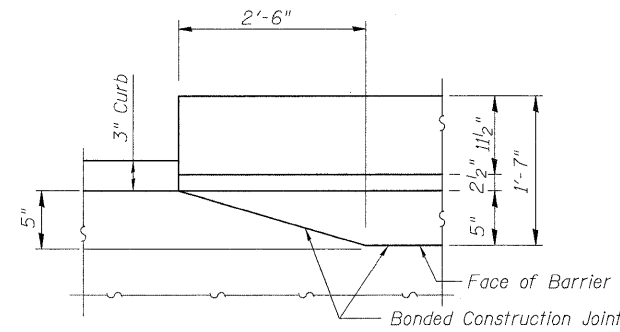


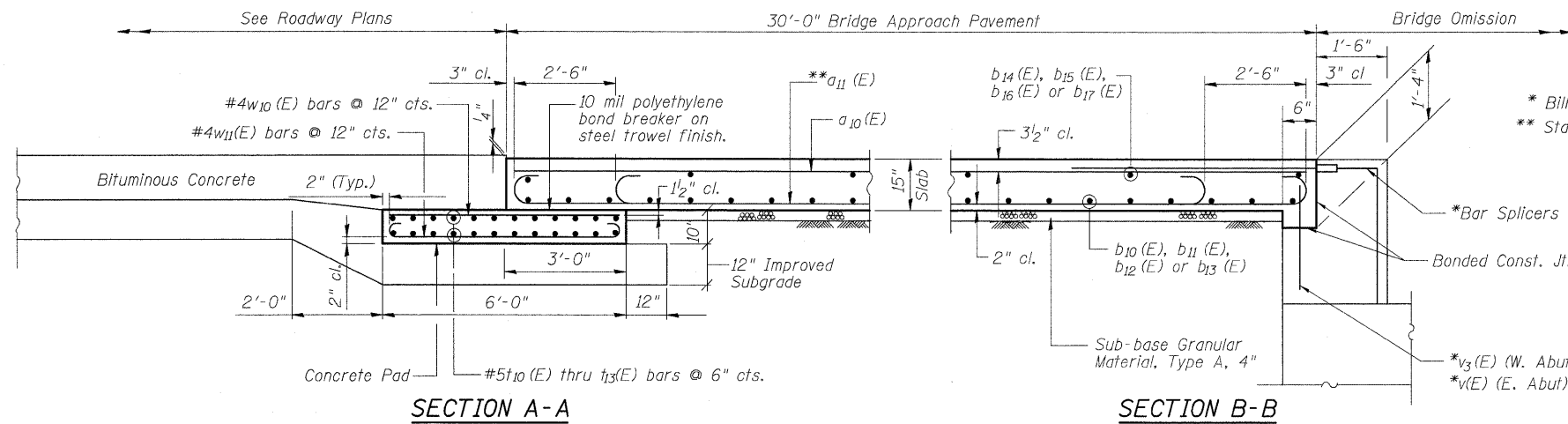
STATE OF ILLINOIS
DEPARTMENT OF TRANSPORTATION



DETAIL A

BILL OF MATERIAL
(THIS SHEET ONLY)

Bar	No.	Size	Length	Shape
a ₁₀ (E)	124	#5	29'-7"	—
a ₁₁ (E)	220	#9	29'-6"	—
b ₁₀ (E)	31	#5	30'-3"	—
b ₁₁ (E)	31	#5	29'-1"	—
b ₁₂ (E)	31	#5	29'-0"	—
b ₁₃ (E)	31	#5	27'-2"	—
b ₁₄ (E)	9	#4	30'-3"	—
b ₁₅ (E)	9	#4	29'-1"	—
b ₁₆ (E)	9	#4	29'-0"	—
b ₁₇ (E)	9	#4	27'-2"	—
c ₁₀ (E)	62	#5	4'-2"	—
c ₁₁ (E)	62	#5	6'-8"	—
t ₁₀ (E)	24	#5	30'-3"	—
t ₁₁ (E)	24	#5	29'-1"	—
t ₁₂ (E)	24	#5	29'-0"	—
t ₁₃ (E)	24	#5	27'-2"	—
w ₁₀ (E)	116	#4	5'-8"	—
w ₁₁ (E)	116	#4	6'-8"	—



SECTION A-A

SECTION B-B

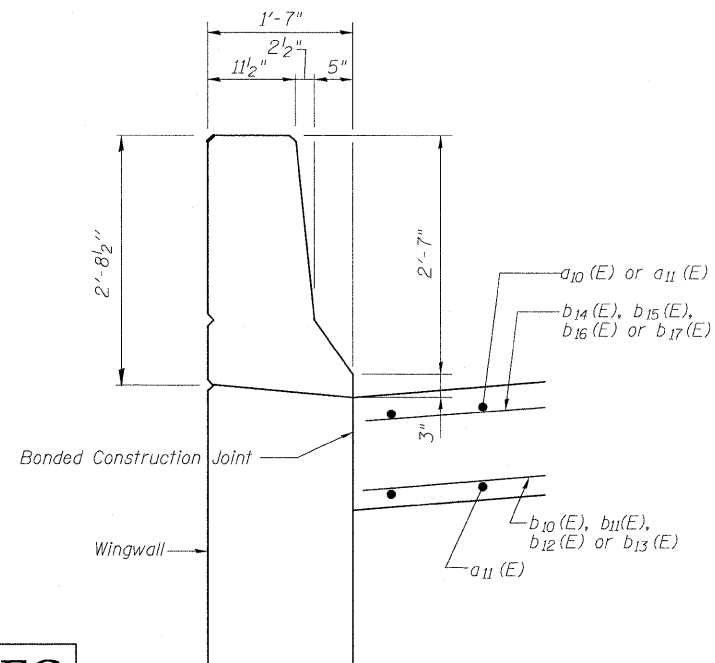
* Bill with Bridge Abutment
** Stagger #9a₁₁(E) bars as shown on plan - full width.

Item	Unit	Total
Concrete Superstructure	Cu Yd	161
Concrete Structures	Cu Yd	22
Reinforcing Bars, Epoxy Coated	Pound	34869*

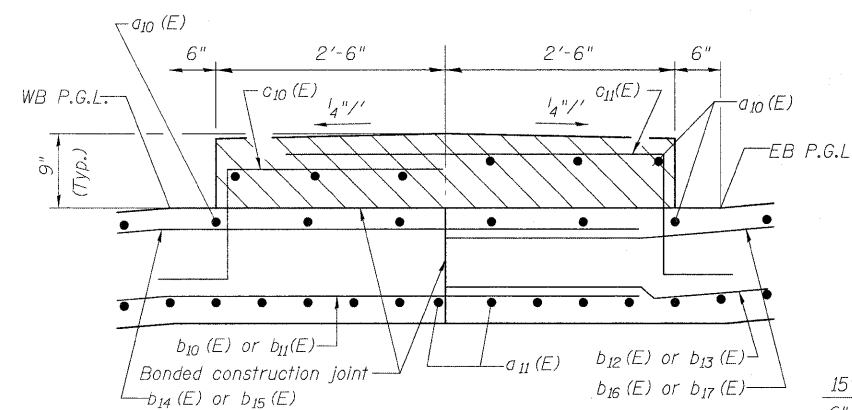
* Includes 31,022 Pounds included in the quantity for the superstructure and 3,847 Pounds included in the quantity for the substructure in the Total Bill of Materials on Sheet 2 of 34.

Notes:

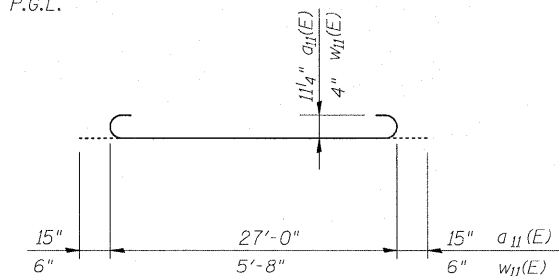
1. Reinforcement bars designated (E) shall be epoxy coated.
2. See Highway Standard 420401 for Pavement connector details.
3. Work this sheet with sheets 18 thru 24 and 29 of 34.
4. Median (hatched area) shall be poured after the deck of Stage II Construction has been done.
5. Approach pavement shall not be constructed until bridge deck has been poured.
6. Concrete for bridge approach pavement included in the cost for "Concrete Superstructure". Concrete for bridge approach pavement concrete pad included in the cost for "Concrete Structures".



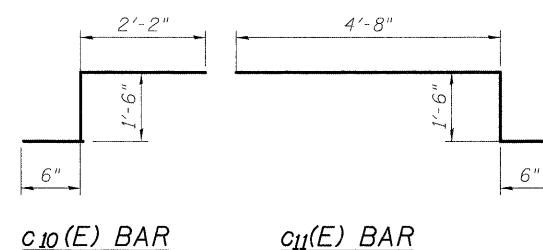
SECTION THRU PARAPET/WINGWALL



SECTION THRU MEDIAN



BARS a₁₁(E) & w₁₁(E)



c₁₀(E) BAR

c₁₁(E) BAR

BRIDGE APPROACH PAVEMENT DETAILS
STRUCTURE NO. 067-0042

DESIGNED - JPM
CHECKED - WPM
DRAWN - MD
CHECKED - JPM, WPM



9-28-09

SHEET NO. 30	F.A.P RTE.	SECTION	COUNTY	TOTAL SHEETS	SHEET NO.
34 SHEETS	809	67-1HBR	Monroe	144	94
CONTRACT NO. 76977					
FED. ROAD DIST. NO. 7 ILLINOIS FED. AID PROJECT					