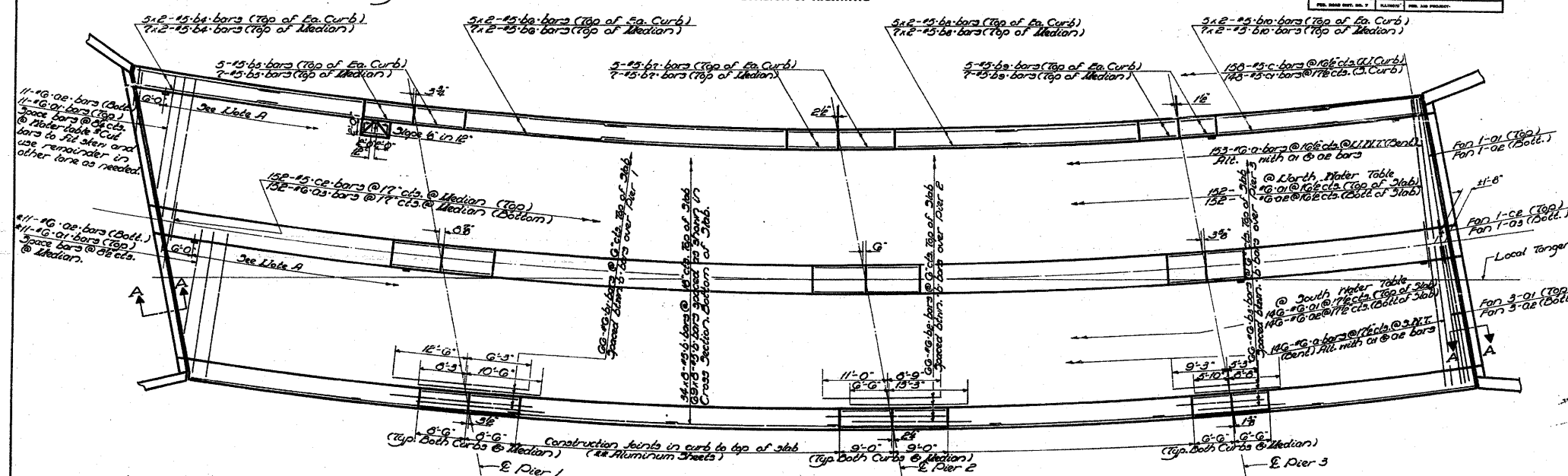


STATE OF ILLINOIS
DEPARTMENT OF PUBLIC WORKS & BUILDINGS
DIVISION OF HIGHWAYS

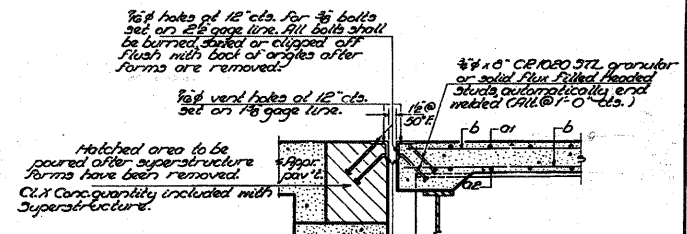
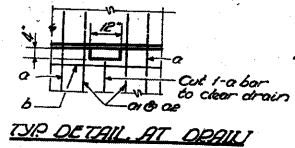
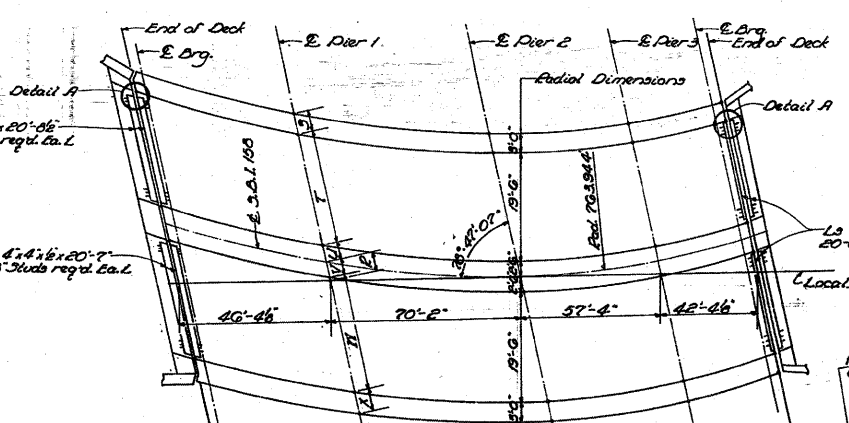
PA 4	67-1HB	MUNROE	36	13	13 SHEETS
------	--------	--------	----	----	-----------

Note 1: 6" Floor Drains @ 15' 0" cts. - Span 1
7" Floor Drains @ 15' 0" cts. - Span 4
Space to miss diaphragms.
Locate at North Curb & So. Side of Median Only.



Note: All 'a' bars are to be placed radial.
Bars indicated thus 20" x 3" x 3" etc. indicates
20 lines of bars with 3 lengths per line.
Aluminum Sheets to be placed normal to
Under Table.

PLAN

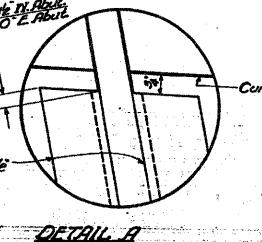


SECTION A-A

WORK THIS SHEET WITH PRECEDING SHEET

DESIGNED	Bobby Chiles	EXAMINED	M.E. B...
CHECKED	...	PASSED	...
DRAWN	Jacobs	APPROVED	...
CHECKED	G.R.		

Location	P	S	T	V	W	X
End of Deck	9'-5"	3'-8"	20'-3"	2'-8"	20'-0"	5'-2"
E. Pier 1	3'-4"	3'-7"	20'-4"	2'-7"	20'-1"	5'-7"
E. Pier 2	0'-0"	3'-0"	19'-8"	2'-6"	19'-10"	5'-0"
E. Pier 3	2'-2"	3'-0"	19'-7"	2'-6"	19'-7"	5'-0"
End of Deck	0'-0"	3'-0"	19'-6"	2'-6"	19'-6"	5'-0"



DETAIL A

SUPERSTRUCTURE
3.0.1.158 OVER
E.A.1 RELOCATED (ILL. RT. 3)
SEC. 07-1HB
MONROE COUNTY
STA. 111+00.25

FOR INFORMATION ONLY

FILE NAME =	USER NAME = owenbj	DESIGNED -	REVISED -	STATE OF ILLINOIS DEPARTMENT OF TRANSPORTATION	EXISTING STRUCTURE PLAN	F.A.P. RTE.	SECTION	COUNTY	TOTAL SHEETS	SHEET NO.
ct:\pw\work\pwidot\owenbj\dms52558\p1n000000.dgn	PLOT SCALE = 50.0000' / IN.	DRAWN -	REVISED -			809	67-1HBR	MONROE	144	100
PLOT DATE = 11/5/2009	DATE -	CHECKED -	REVISED -			SCALE:		SHEET NO. OF SHEETS STA. TO STA.		CONTRACT NO. 76977
		DRAWN -	REVISED -					ILLINOIS FED. AID PROJECT		
		CHECKED -	REVISED -							