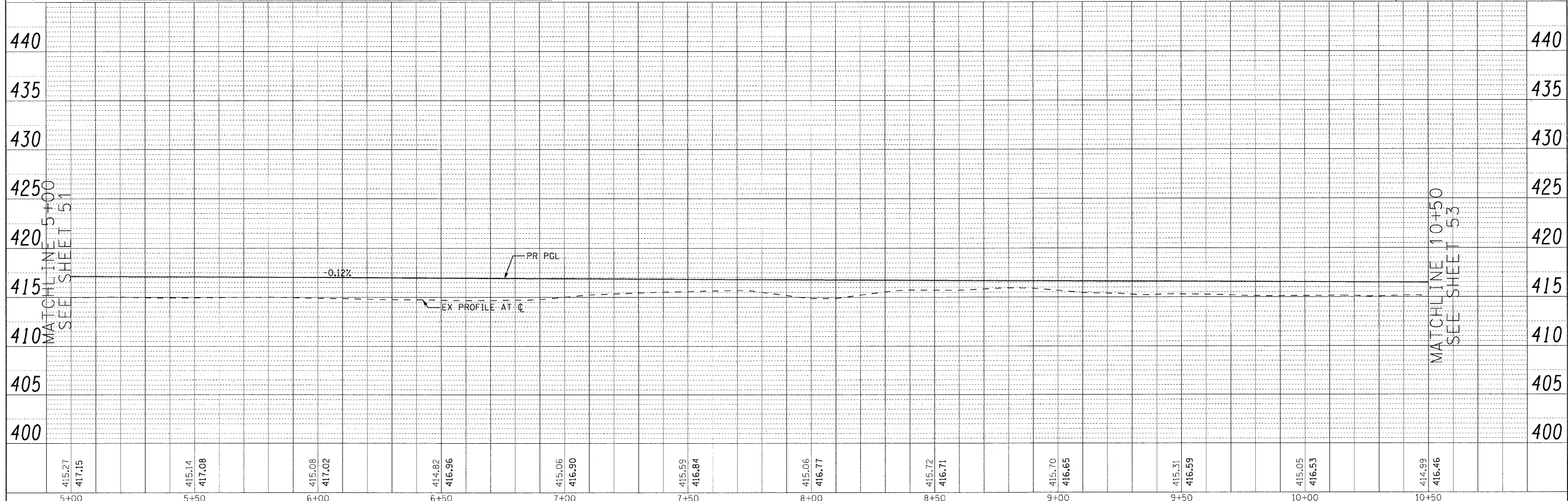
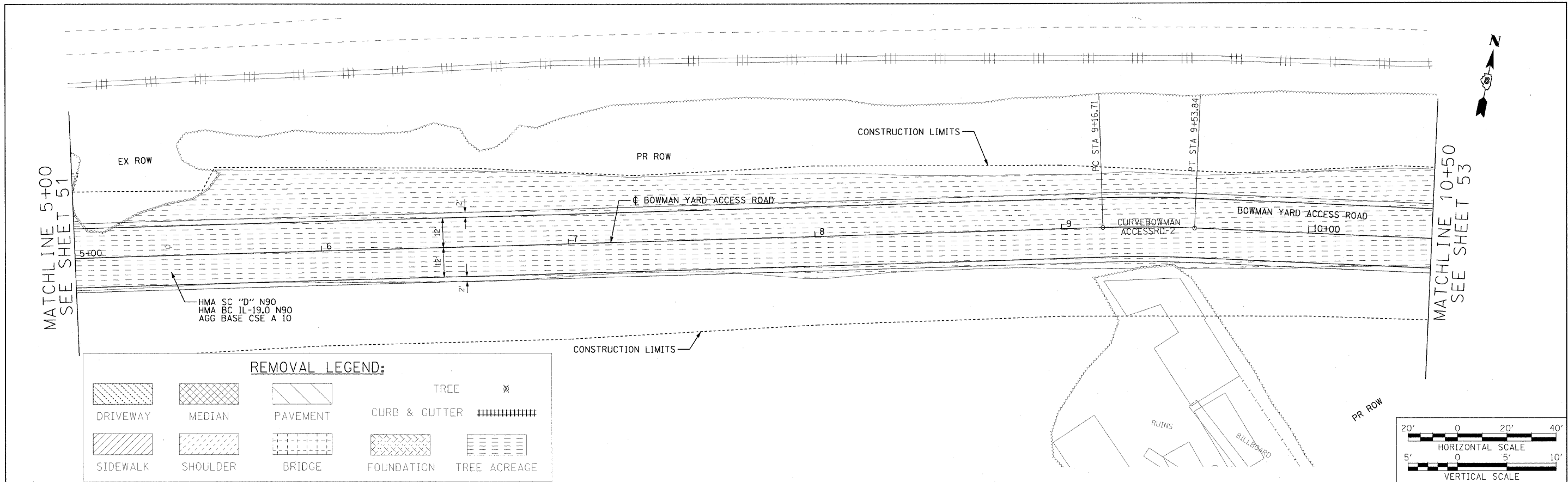


PLAN	REVISIONS	DATE
NO.	BY	
NO.	BY	
NO.	BY	
NO.	BY	
NO.	BY	
NO.	BY	
NO.	BY	
NO.	BY	
NO.	BY	
NO.	BY	

PROFILE	REVISIONS	DATE
NO.	BY	
NO.	BY	
NO.	BY	
NO.	BY	
NO.	BY	
NO.	BY	
NO.	BY	
NO.	BY	
NO.	BY	
NO.	BY	



5+00	415.27 417.15	5+50	415.14 417.08	6+00	415.08 417.02	6+50	414.82 416.96	7+00	415.06 416.90	7+50	415.59 416.84	8+00	415.06 416.77	8+50	415.72 416.71	9+00	415.70 416.65	9+50	415.31 416.59	10+00	415.05 416.53	10+50	414.99 416.46
------	------------------	------	------------------	------	------------------	------	------------------	------	------------------	------	------------------	------	------------------	------	------------------	------	------------------	------	------------------	-------	------------------	-------	------------------

FTI F NAME =	USER NAME = #USER#	DESIGNED - RRV	REVISED -	<b>STATE OF ILLINOIS</b> <b>DEPARTMENT OF TRANSPORTATION</b>	<b>ROADWAY PLAN AND PROFILE BOWMAN YARD ACCESS RD.</b>	F.A.T. RTE. 70	SECTION 82-2-1HB	COUNTY ST. CLAIR	TOTAL SHEETS 236	SHEET NO. 52
#FILE#	PLOT SCALE = #SCALE#	DRAWN - KNW	REVISED -			SCALE: 1"=20'	SHEET NO. 12 OF 17 SHEETS	STA. 5+00.00 TO STA. 10+50.00	FED. ROAD DIST. NO. ILLINOIS FED. AID PROJECT	CONTRACT NO. 76C55
#DATE#	PLOT DATE = #DATE#	CHECKED - DRH	REVISED -							
#TIME#		DATE - OCTOBER 9, 2009	REVISED -							