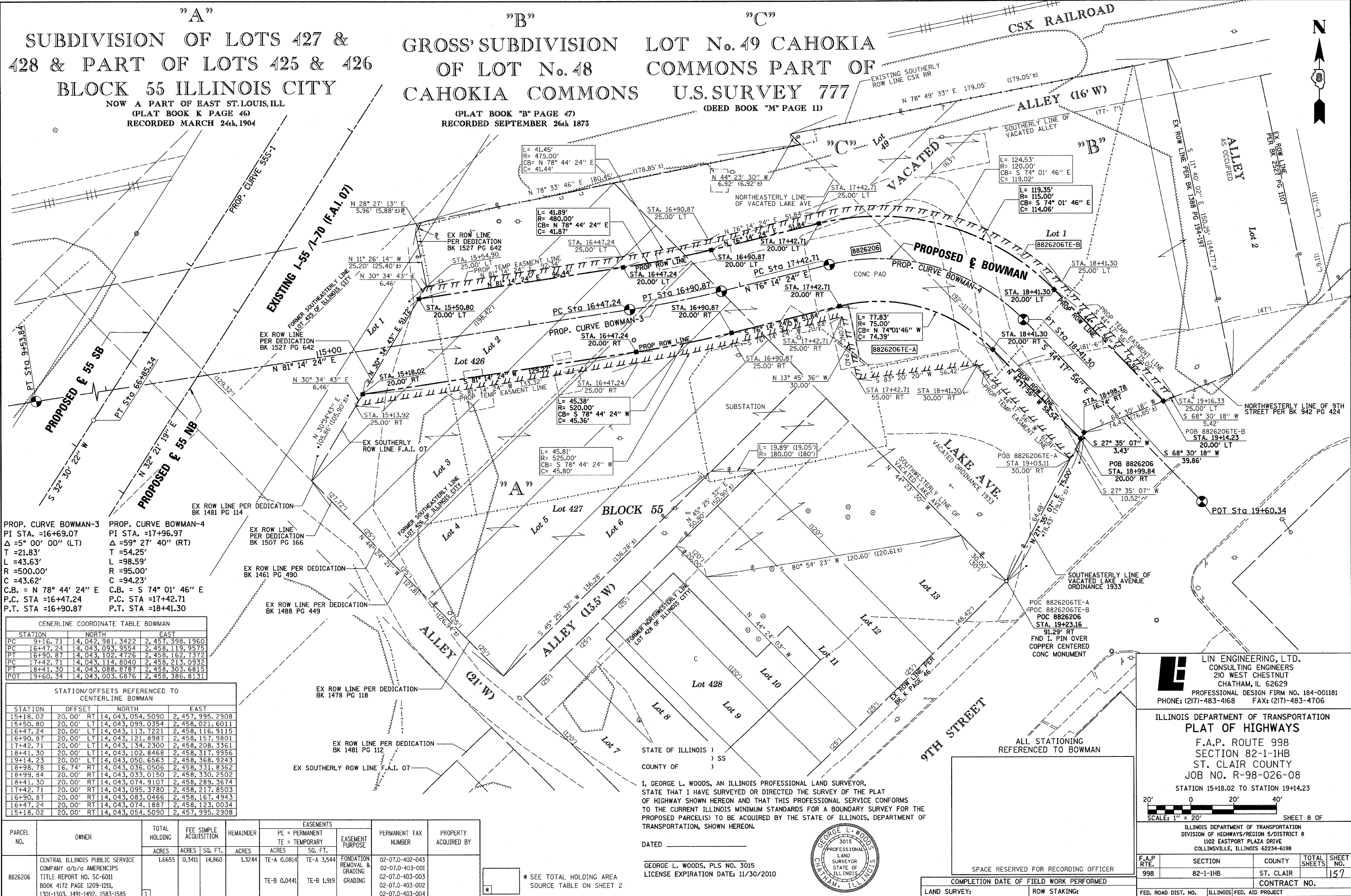


PART OF THE SE 1/4 OF SECTION 7, T2N, R9W OF THE 3RD PM, ST. CLAIR COUNTY, ILLINOIS



PROP. CURVE BOWMAN-3
 PI STA. =16+69.07
 Δ = 5° 00' 00" (LT)
 T = 21.83'
 L = 43.63'
 R = 500.00'
 C = 43.62'
 C.B. = N 78° 44' 24" E
 P.C. STA = 16+47.24
 P.T. STA = 16+90.87

PROP. CURVE BOWMAN-4
 PI STA. =17+96.97
 Δ = 59° 27' 40" (RT)
 T = 54.25'
 L = 98.59'
 R = 95.00'
 C = 94.23'
 C.B. = S 74° 01' 46" E
 P.C. STA = 17+42.71
 P.T. STA = 18+41.30

STATION	NORTH	EAST
PC 9+16.71	14,042,981.3422	2,457,398.1960
PC 16+47.24	14,043,093.9554	2,458,119.9575
PT 16+90.87	14,043,102.4726	2,458,162.7372
PC 17+42.71	14,043,114.8040	2,458,213.0932
PT 18+41.30	14,043,088.8787	2,458,303.6815
POT 19+60.34	14,043,003.6876	2,458,386.8131

STATION	OFFSET	NORTH	EAST
15+18.02	20.00' RT	14,043,054.5090	2,457,995.2908
15+50.80	20.00' LT	14,043,099.0354	2,458,021.6011
16+47.24	20.00' LT	14,043,113.7221	2,458,116.9115
16+90.87	20.00' LT	14,043,121.8987	2,458,157.9801
17+42.71	20.00' LT	14,043,134.2300	2,458,208.3361
18+41.30	20.00' LT	14,043,102.8468	2,458,317.9356
19+14.23	20.00' LT	14,043,050.6563	2,458,368.9243
18+98.78	16.74' RT	14,043,036.0506	2,458,331.8362
18+99.84	20.00' RT	14,043,033.0150	2,458,330.2502
18+41.30	20.00' RT	14,043,074.9107	2,458,289.3674
17+42.71	20.00' RT	14,043,095.3780	2,458,217.8503
16+90.87	20.00' RT	14,043,083.0466	2,458,167.4943
16+47.24	20.00' RT	14,043,074.1887	2,458,123.0034
15+18.02	20.00' RT	14,043,054.5090	2,457,995.2908

PARCEL NO.	OWNER	TOTAL HOLDING ACRES	FEE SIMPLE ACQUISITION ACRES	REMAINDER ACRES	EASEMENTS		PERMANENT TAX NUMBER	PROPERTY ACQUIRED BY	
					PE = PERMANENT ACRES	TE = TEMPORARY SQ. FT.			
8826206	CENTRAL ILLINOIS PUBLIC SERVICE COMPANY d/b/a AMERENCIPI TITLE REPORT NO. SC-6011 BOOK 4172 PAGE 1209-1211, 1301-1303, 1491-1492, 1583-1585	1.6655	0.3411	14,860	1.3244	TE-A 0.0814 TE-B 0.0411	TE-A 3,544 TE-B 1,919	FONDATION REMOVAL & GRADING	02-07.0-402-043 02-07.0-403-001 02-07.0-403-003 02-07.0-403-002 02-07.0-403-004

I, GEORGE L. WOODS, AN ILLINOIS PROFESSIONAL LAND SURVEYOR, STATE THAT I HAVE SURVEYED OR DIRECTED THE SURVEY OF THE PLAT OF HIGHWAY SHOWN HEREON AND THAT THIS PROFESSIONAL SERVICE CONFORMS TO THE CURRENT ILLINOIS MINIMUM STANDARDS FOR A BOUNDARY SURVEY FOR THE PROPOSED PARCEL(S) TO BE ACQUIRED BY THE STATE OF ILLINOIS, DEPARTMENT OF TRANSPORTATION, SHOWN HEREON.

DATED _____

GEORGE L. WOODS, PLS NO. 3015
 LICENSE EXPIRATION DATE: 11/30/2010

* SEE TOTAL HOLDING AREA SOURCE TABLE ON SHEET 2



LIN ENGINEERING, LTD.
 CONSULTING ENGINEERS
 210 WEST CHESTNUT
 CHATHAM, IL 62629
 PROFESSIONAL DESIGN FIRM NO. 184-001181
 PHONE: (217)-483-4168 FAX: (217)-483-4706

ILLINOIS DEPARTMENT OF TRANSPORTATION
PLAT OF HIGHWAYS
 F.A.P. ROUTE 998
 SECTION 82-1-1HB
 ST. CLAIR COUNTY
 JOB NO. R-98-026-08
 STATION 15+18.02 TO STATION 19+14.23

SCALE: 1" = 20'		SHEET 8 OF	
ILLINOIS DEPARTMENT OF TRANSPORTATION DIVISION OF HIGHWAYS/REGION 5/DISTRICT 8 1102 EASTPORT PLAZA DRIVE COLLINGSVILLE, ILLINOIS 62234-6198			
F.A.P. RTE. 998	SECTION 82-1-1HB	COUNTY ST. CLAIR	TOTAL SHEETS 157
COMPLETION DATE OF FIELD WORK PERFORMED		CONTRACT NO.	
LAND SURVEY:	ROW STAKING:	FED. ROAD DIST. NO.	ILLINOIS FED. AID PROJECT