

NORTH CURB LINE

Location	Station	Offset	Theoretical Grade Elevations
End W. Appr. Pav't.	16+50.83	-26.00	427.78
A	16+60.83	-26.00	428.26
B	16+70.83	-26.00	428.74
Bk. W. Abut.	16+80.83	-26.00	429.22

NORTH EDGE OF PAVEMENT

Location	Station	Offset	Theoretical Grade Elevations
End W. Appr. Pav't.	16+47.07	-15.00	427.45
A	16+57.07	-15.00	427.93
B	16+67.07	-15.00	428.41
Bk. W. Abut.	16+77.07	-15.00	428.89

NORTH EDGE OF LANE

Location	Station	Offset	Theoretical Grade Elevations
End W. Appr. Pav't.	16+46.38	-13.00	427.44
A	16+56.38	-13.00	427.92
B	16+66.38	-13.00	428.40
Bk. W. Abut.	16+76.38	-13.00	428.88

BASELINE ROADWAY AND P.G. LINE

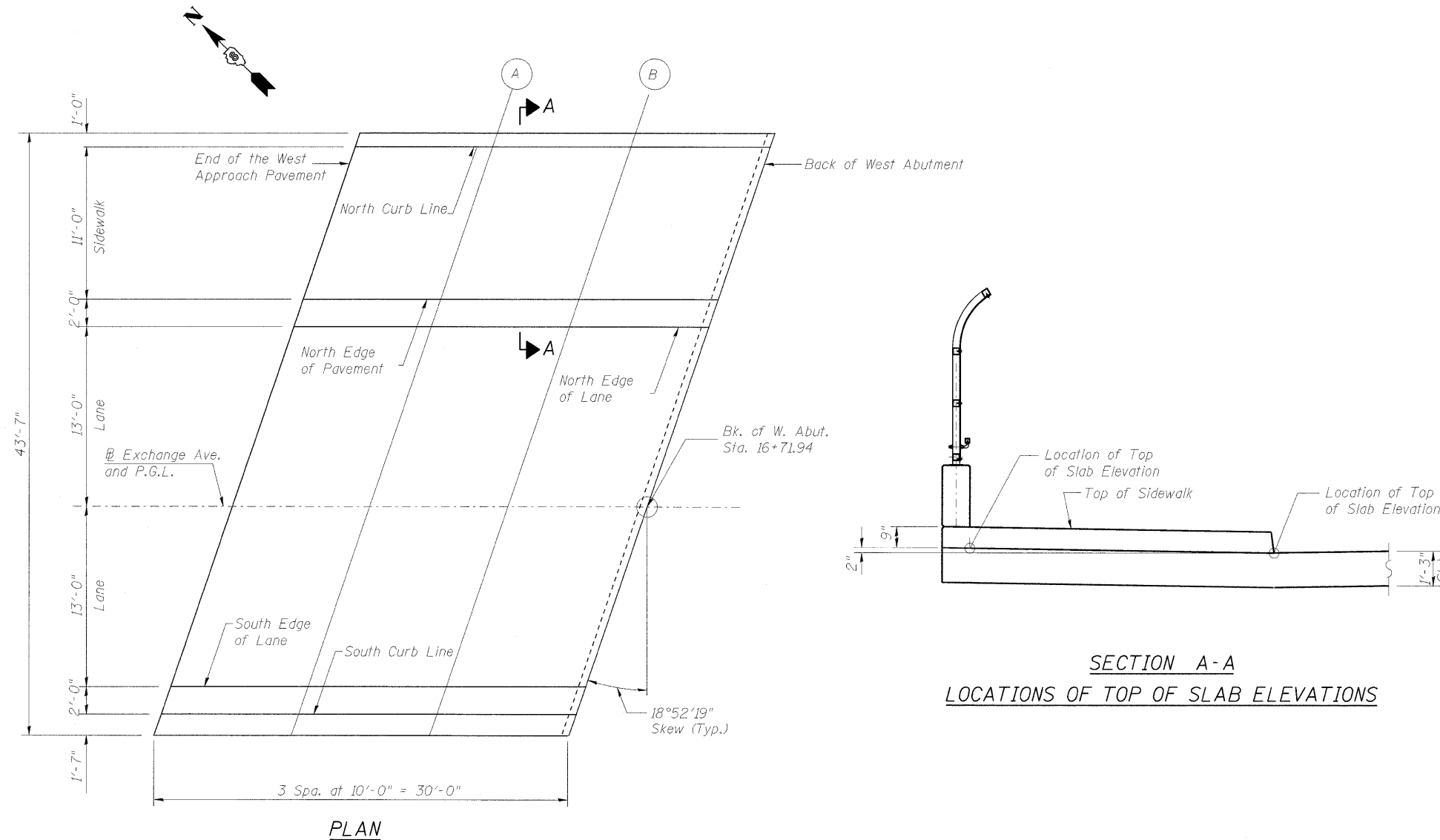
Location	Station	Offset	Theoretical Grade Elevations
End W. Appr. Pav't.	16+41.94	0.00	427.42
A	16+51.94	0.00	427.90
B	16+61.94	0.00	428.38
Bk. W. Abut.	16+71.94	0.00	428.86

SOUTH EDGE OF LANE

Location	Station	Offset	Theoretical Grade Elevations
End W. Appr. Pav't.	16+37.50	13.00	427.02
A	16+47.50	13.00	427.50
B	16+57.50	13.00	427.98
Bk. W. Abut.	16+67.50	13.00	428.46

SOUTH CURB LINE

Location	Station	Offset	Theoretical Grade Elevations
End W. Appr. Pav't.	16+36.81	15.00	426.95
A	16+46.81	15.00	427.43
B	16+56.81	15.00	427.91
Bk. W. Abut.	16+66.81	15.00	428.39



FILE NAME = 082-0378_76C55_S87_AppW_E1.dgn	USER NAME = hej	DESIGNED - BGF	REVISED -
		DRAWN - BGF	REVISED -
		CHECKED - CHY	REVISED -
		DATE - 10-09-09	REVISED -

**STATE OF ILLINOIS
DEPARTMENT OF TRANSPORTATION**

**TOP OF WEST APPROACH SLAB ELEVATIONS
EXCHANGE AVENUE OVER I-55 /70 (S.N. 082-0378)**

SCALE: SHEET NO. S-7 OF S-37 SHEETS STA. TO STA.

F.A.I. RTE. 70	SECTION 82-1-1HB	COUNTY ST. CLAIR	TOTAL SHEETS 236	SHEET NO. 166
FED. ROAD DIST. NO. ILLINOIS FED. AID PROJECT			CONTRACT NO. 76C55	