

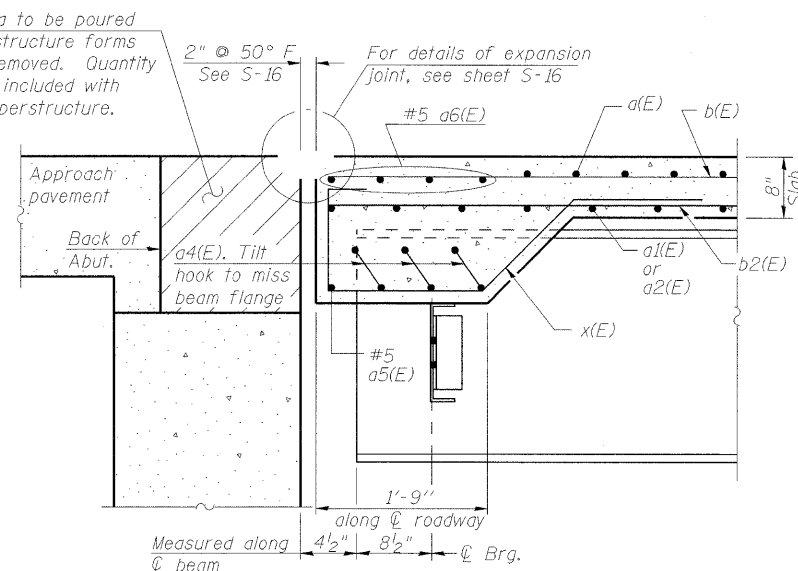
* Order a(E), a1(E) and a2(E) bars full length. Cut to fit skew and use remainder of bars in opposite end

MINIMUM BAR LAP

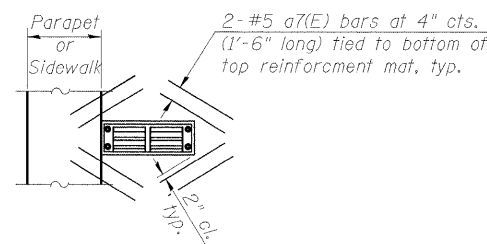
#5 bars = 2'-2"
#6 bars = 2'-7"

DECK PLAN

Hatched area to be poured after superstructure forms have been removed. Quantity of concrete included with Concrete Superstructure.

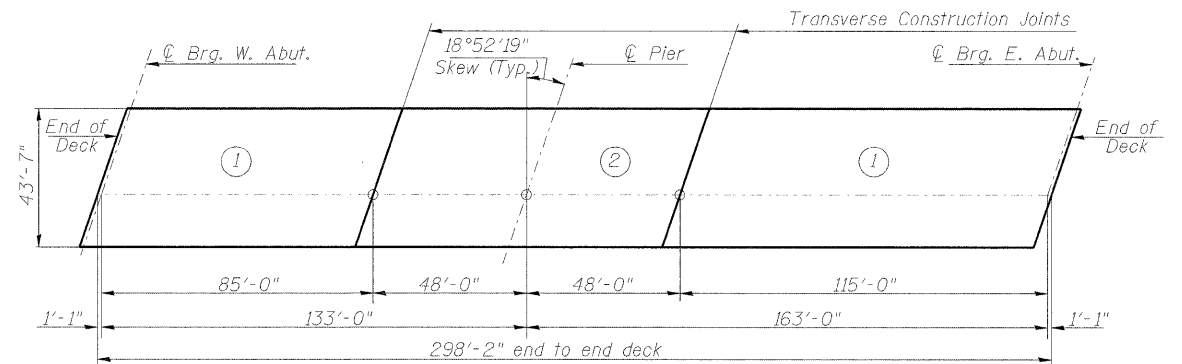


SECTION A-A



Note:
Cut longitudinal reinforcement to clear drainage scuppers.

DRAINAGE SCUPPERS REINFORCEMENT



DECK POURING SEQUENCE

The concrete deck segments shall be poured in the numerical order shown above. The pour must start from West end deck. When the deck pour is stopped for the day at one or more of the transverse bonded construction joints in the deck pouring sequence as shown, the next pour shall not be made until both of the following are met:
1) At least 72 hours shall have elapsed from the end of previous pour.
2) The concrete strength shall have attained a minimum flexural strength of 650 psi or a minimum compressive strength of 3500 psi.

FILE NAME = 082-0378_76C55_S89_DeckP1.dgn	USER NAME = hej	DESIGNED - JXH	REVISD -	STATE OF ILLINOIS DEPARTMENT OF TRANSPORTATION	DECK PLAN EXCHANGE AVENUE OVER I-55 /70 (S.N. 082-0378)		F.A.I. RTE. 70	SECTION 82-1-1HB	COUNTY ST. CLAIR	TOTAL SHEETS 236	SHEET NO. 168	
PLOT SCALE = 0=1" = 12'-0" / IN.	CHECKED - CHY	DATE - 10-09-09	REVISD -		SCALE: 1" = 12'-0"	SHEET NO. S-9 OF S-37 SHEETS	STA. TO STA.	FED. ROAD DIST. NO.	ILLINOIS FED. AID PROJECT	CONTRACT NO. 76C55		