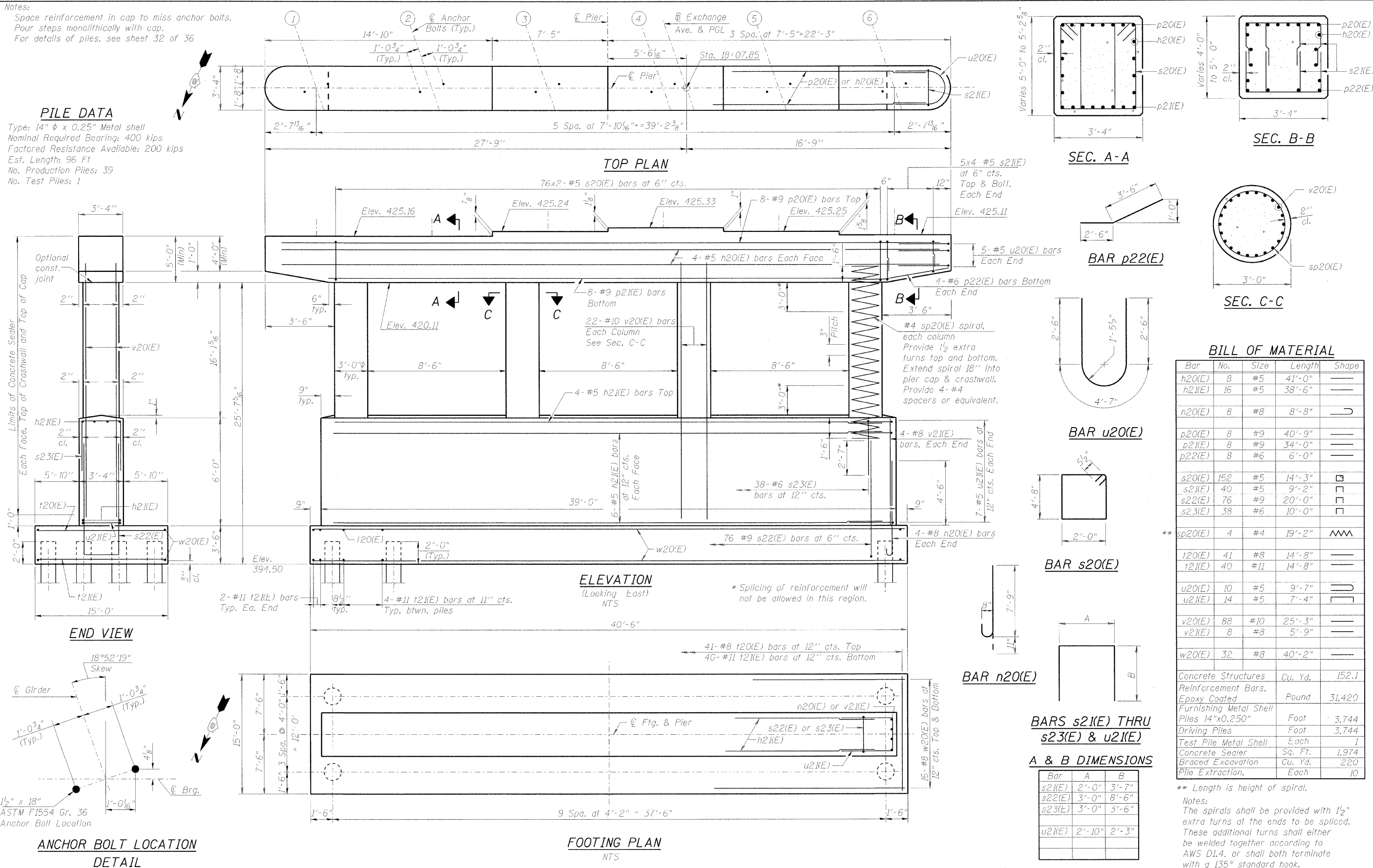


Notes:
 Space reinforcement in cap to miss anchor bolts.
 Pour steps monolithically with cap.
 For details of piles, see sheet 32 of 36

PILE DATA

Type: 14" ϕ x 0.25" Metal shell
 Nominal Required Bearing: 400 kips
 Factored Resistance Available: 200 kips
 Est. Length: 96 Ft
 No. Production Piles: 39
 No. Test Piles: 1



BILL OF MATERIAL

Bar	No.	Size	Length	Shape
h20(E)	8	#5	41'-0"	—
h21(E)	16	#5	38'-6"	—
n20(E)	8	#8	8'-8"	U
p20(E)	8	#9	40'-9"	—
p21(E)	8	#9	34'-0"	—
p22(E)	8	#6	6'-0"	—
s20(E)	152	#5	14'-3"	□
s21(E)	40	#5	9'-2"	□
s22(E)	76	#9	20'-0"	□
s23(E)	38	#6	10'-0"	□
sp20(E)	4	#4	19'-2"	W
t20(E)	41	#8	14'-8"	—
t21(E)	40	#11	14'-8"	—
u20(E)	10	#5	9'-7"	U
u21(E)	14	#5	7'-4"	U
v20(E)	88	#10	25'-3"	—
v21(E)	8	#8	5'-9"	—
w20(E)	32	#8	40'-2"	—
Concrete Structures		Cu. Yd.	152.1	
Reinforcement Bars, Epoxy Coated		Pound	31,420	
Furnishing Metal Shell Piles 14"x0.250"		Foot	3,744	
Driving Piles		Foot	3,744	
Test Pile Metal Shell		Each	1	
Concrete Sealer		Sq. Ft.	1,974	
Braced Excavation		Cu. Yd.	220	
Pile Extraction		Each	10	

** Length is height of spiral.
 Notes:
 The spirals shall be provided with 1 1/2" extra turns at the ends to be spliced. These additional turns shall either be welded together according to AWS D1.4, or shall both terminate with a 135° standard hook.

BARS s21(E) THRU s23(E) & u21(E)

A & B DIMENSIONS

Bar	A	B
s21(E)	2'-0"	3'-7"
s22(E)	3'-0"	8'-6"
s23(E)	3'-0"	3'-6"
u21(E)	2'-10"	2'-3"