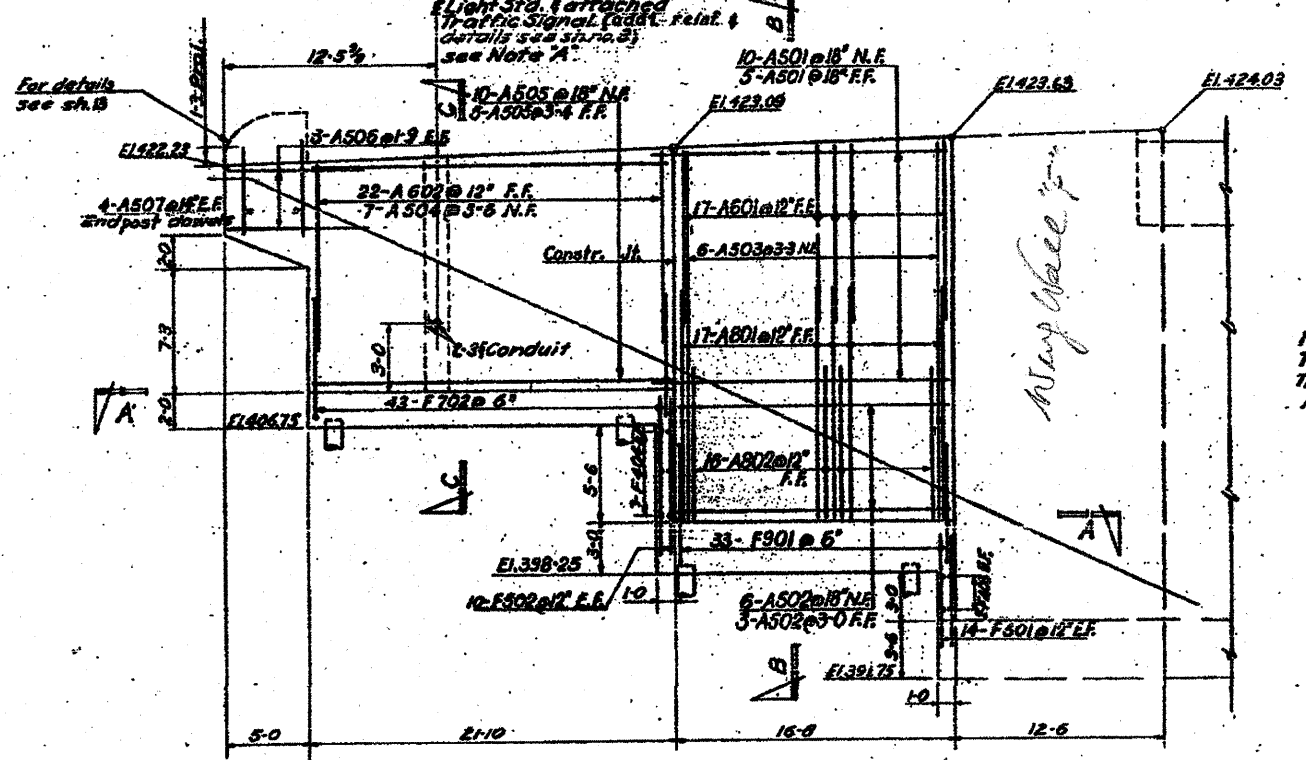
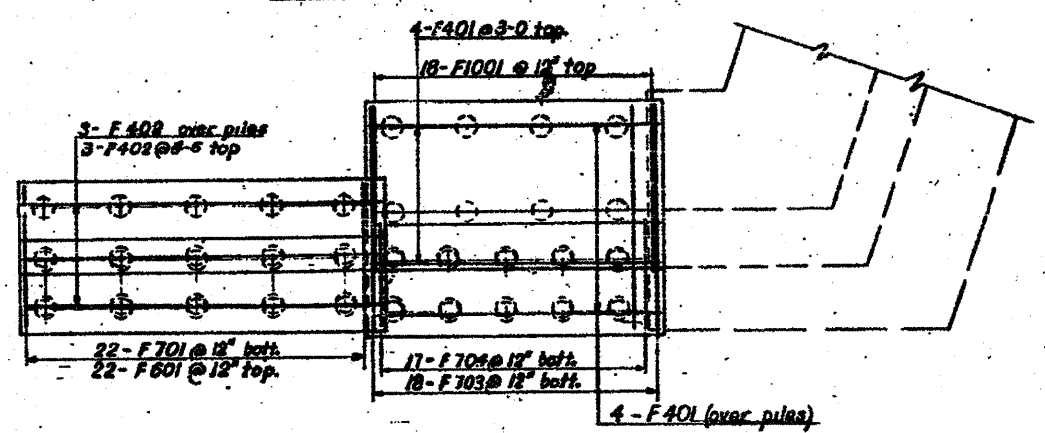


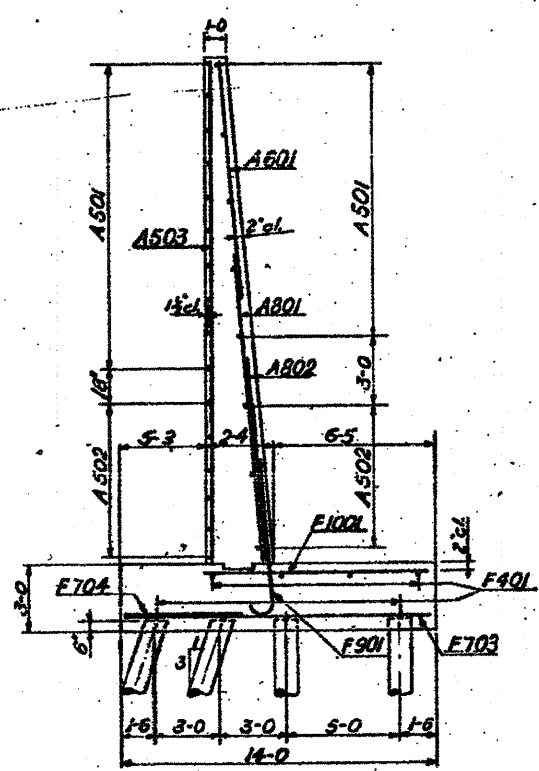
PLAN



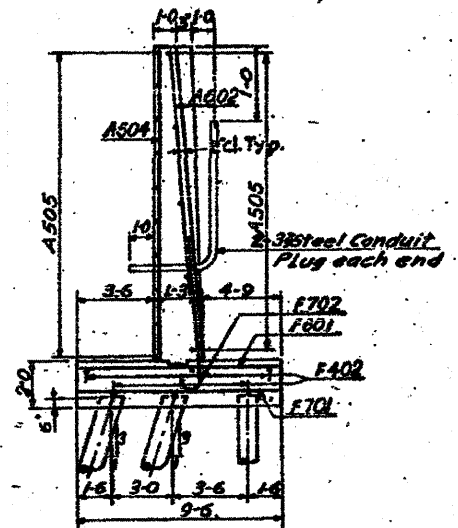
ELEVATION



SECTION A-A
SHOWING FOOTING REINFORCEMENT.



SECTION B-B



SECTION C-C

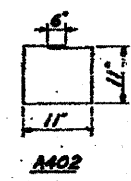
BAR LIST				
MARK	NO. REQ.	SIZE	LENGTH	SHAPE
F401	6	4	17-4	—
F402	6	4	21-6	—
F403	4	4	13-8	—
F404	6	4	9-2	—
F501	28	5	6-6	—
F502	20	5	8-8	—
F601	22	6	9-2	—
F701	22	7	9-2	—
F702	43	7	7-4	—
F703	18	7	13-3	—
F704	17	7	7-5	—
F901	33	9	7-6	—
F1001	18	10	9-6	—
A401	4	4	8-0	—
A402	9	4	4-2	—
A501	15	6	17-7	—
A502	9	5	16-4	—
A503	6	5	21-9	—
A504	7	5	13-4	—
A505	15	5	21-6	—
A506	6	5	7-9	—
A507	8	5	5-3	—
A601	21	6	13-3	—
A602	22	6	11-4	—
A801	17	8	12-0	—
A802	16	8	7-6	—

FOOTINGS
WALLS

Note A
This Light Standard with attached Traffic Signal will be included in this contract.

BILL OF MATERIAL N.W. WING WALL.	
Description	Unit Quantity
Class X Concrete	c. yds. 82.2
Reinforcement Bars	Lbs. 6930
Furnishing Cressed Piles (20 tons)	L.F. 664
Driving Timber Piles	L.F. 664
Test Piles (Timber)	Eq. 7

PILE DATA		
No.	Capacity	Est. Length
32	20 Tons	27 FT.



STATE OF ILLINOIS
DEPARTMENT OF PUBLIC WORKS & BLDGS.
DIVISION OF HIGHWAYS
&
CITY OF EAST ST. LOUIS
EAST ST. LOUIS EXPRESSWAY
EXCHANGE AVE. OVER EXPRESSWAY
NORTHWEST WINGWALL

H. W. LOCHNER, INC.
ENGINEERS
CHICAGO, ILLINOIS

JANUARY 1938 SHEET NO. 19

Designed by: RME
Drawn by: EN
Checked by: RME

NOTES:
For handrail layout details and End Post see sheet No. 13.
For details of expansion and construction joints see sheet No. 7.

FOR INFORMATION ONLY