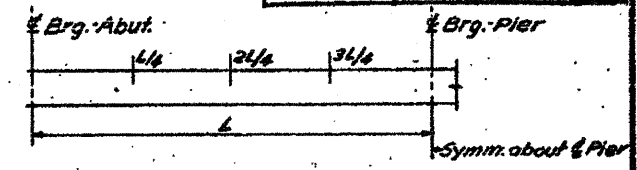


**STRINGER SCHEDULE**

Mark	Material	Length 'L'
①	36 WF 194	141-11 1/2
②		
③		
④		
⑤	36 WF 194	
⑥	36 WF 150	
⑦	36 WF 150	
⑧	36 WF 194	
⑨		
⑩		141-11 1/2
⑪		142-8 1/2
⑫	36 WF 194	143-5 3/4

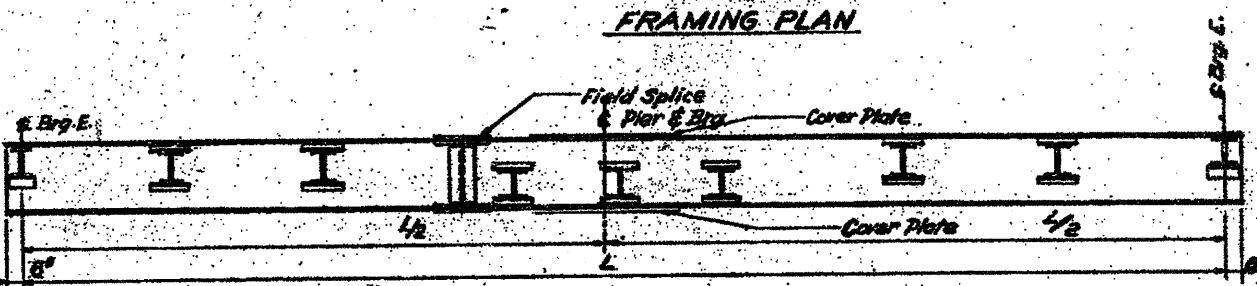
**DIAPHRAGM SCHEDULE**

Mark	Material
D <sub>1</sub>	14 WF 30
D <sub>2</sub>	14 WF 30
D <sub>3</sub>	14 WF 30
D <sub>4</sub>	16 WF 36



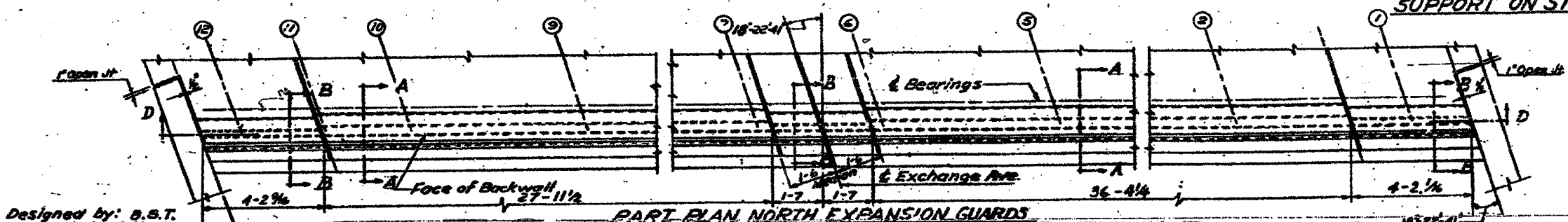
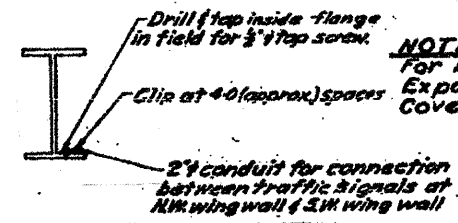
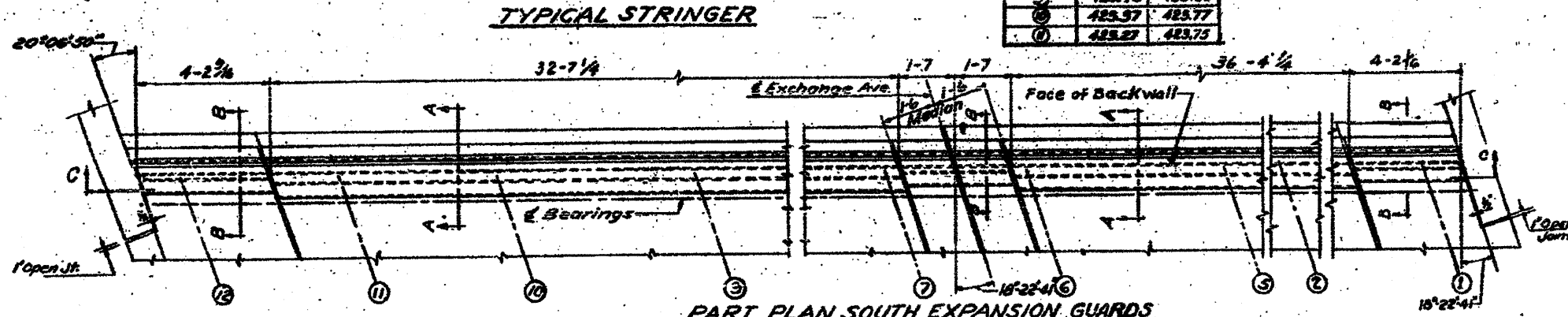
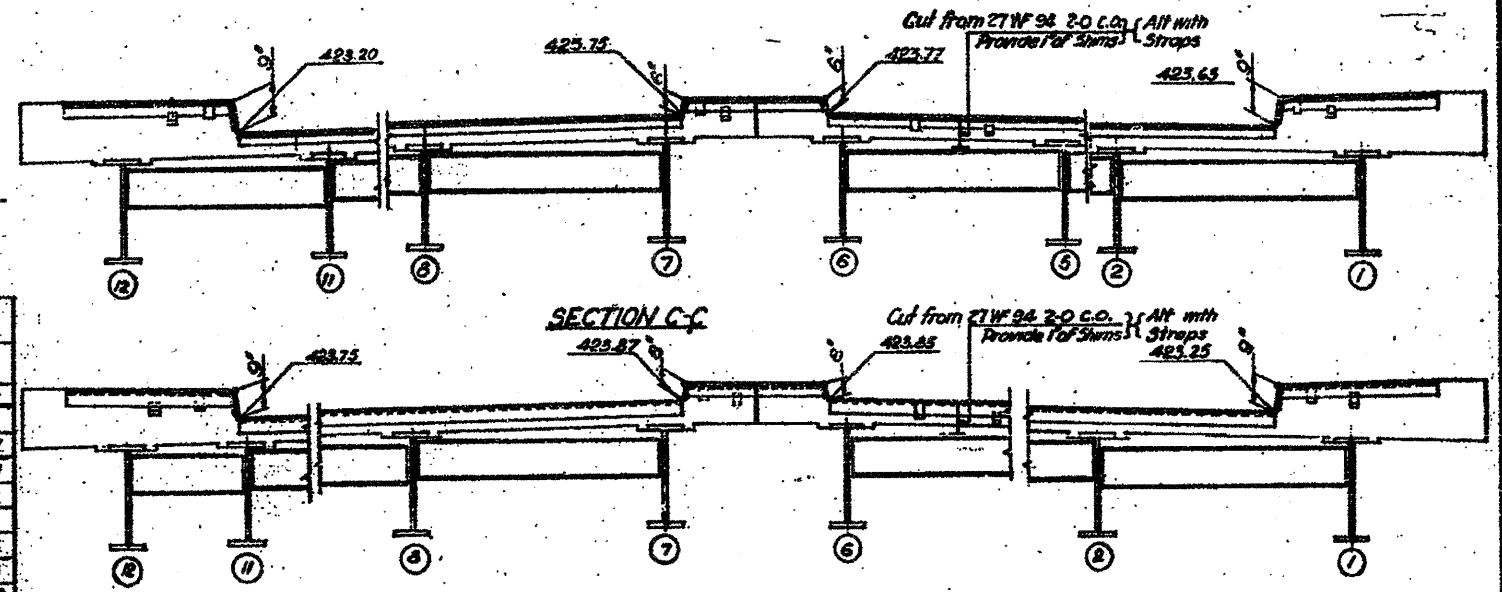
**D.L. DEFLECTION**

Location	Exterior Stringer			Interior Stringers			Interior Stringer			Exterior Stringer		
	1/2	2/3	3/4	1/2	2/3	3/4	1/2	2/3	3/4	1/2	2/3	3/4
Deflection due to wt. of steel	1/8"	1/8"	1/8"	1/8"	1/8"	1/8"	1/8"	1/8"	1/8"	1/8"	1/8"	1/8"
Deflection due to wt. of conc.	3/8"	3/8"	3/8"	3/8"	3/8"	3/8"	3/8"	3/8"	3/8"	3/8"	3/8"	3/8"
Total D.L. deflection	3/4"	7/8"	3/4"	1/2"	9/16"	1/2"	3/8"	1/2"	3/8"	3/8"	1/2"	5/8"



**EXP. GUARD ELEVATIONS**  
(Given above Strg. Brg.)

STR.	ELEVATION	
	SEC. C	SEC. D
①	423.63	423.35
②	423.69	423.47
③	423.72	423.59
④	423.74	423.71
⑤	423.77	423.83
⑥	423.74	423.96
⑦	423.61	423.83
⑧	423.49	423.80
⑨	423.57	423.77
⑩	423.27	423.75



**NOTE:**  
For Bearings, Diaphragm connections, Expansion Guard Sections A-A & B-B, Splice, Cover & Welding Details, see Sh. No. 14.

STATE OF ILLINOIS  
DEPARTMENT OF PUBLIC WORKS & BLDGS.  
DIVISION OF HIGHWAYS  
&  
CITY OF EAST ST. LOUIS  
EAST ST. LOUIS EXPRESSWAY  
EXCHANGE AVE. OVER EXPRESSWAY  
FRAMING PLAN & STEEL DETAILS

H.W. LOCHNER, INC.  
ENGINEERS

Designed by: B.S.T.  
Drawn by: G.H.  
Checked by: B.S.T.

FOR INFORMATION ONLY