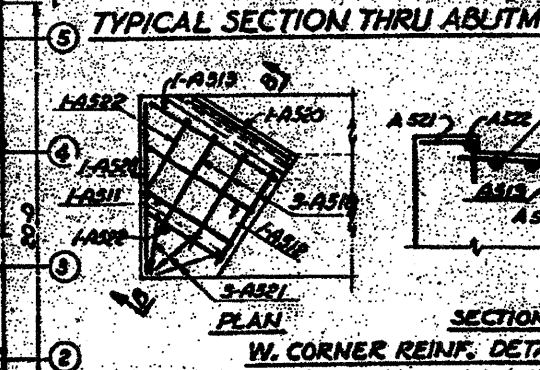
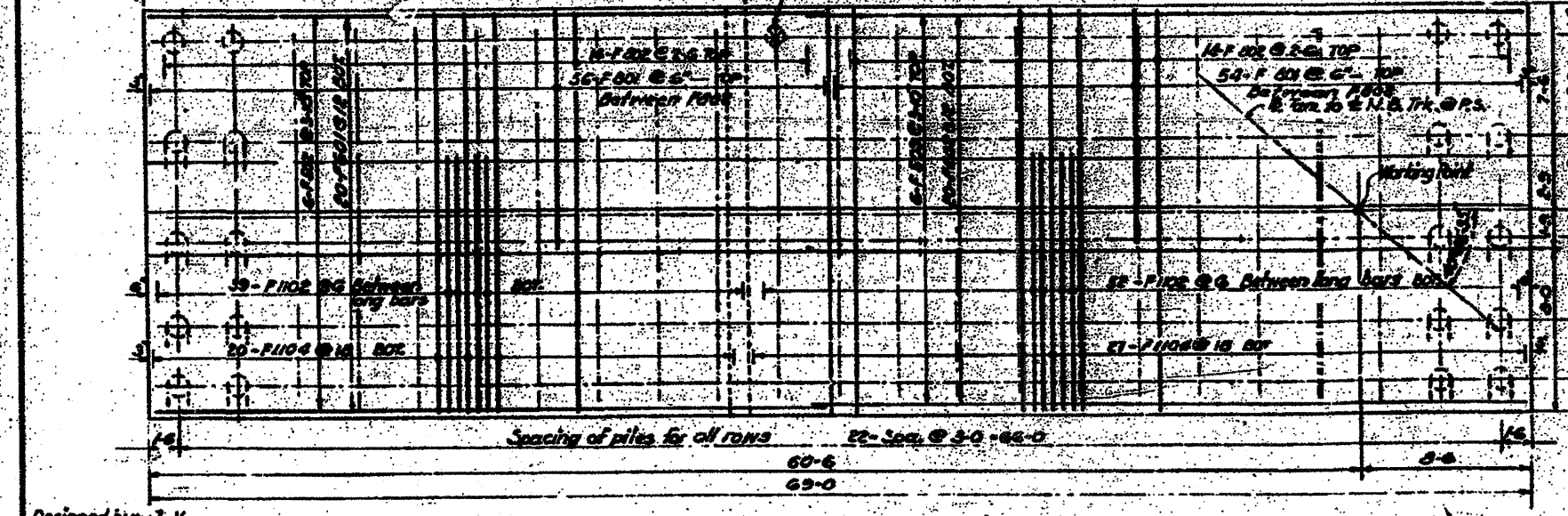
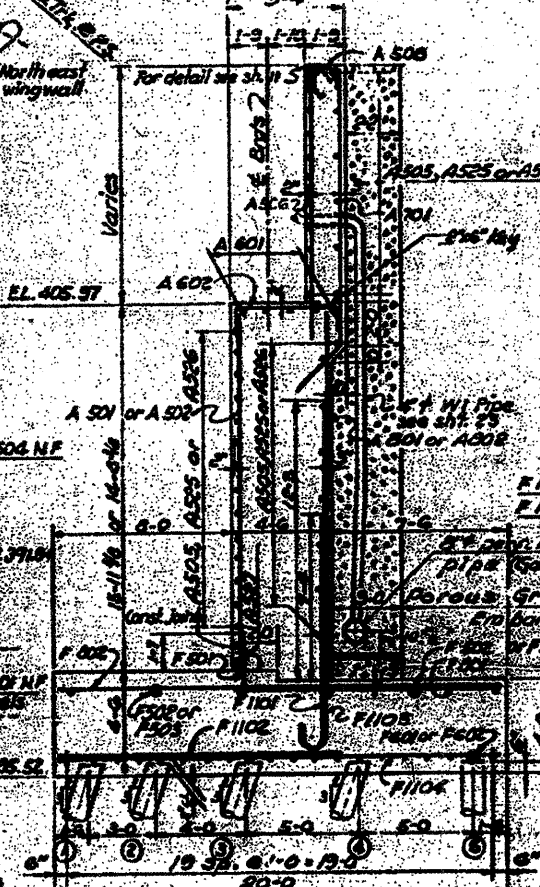
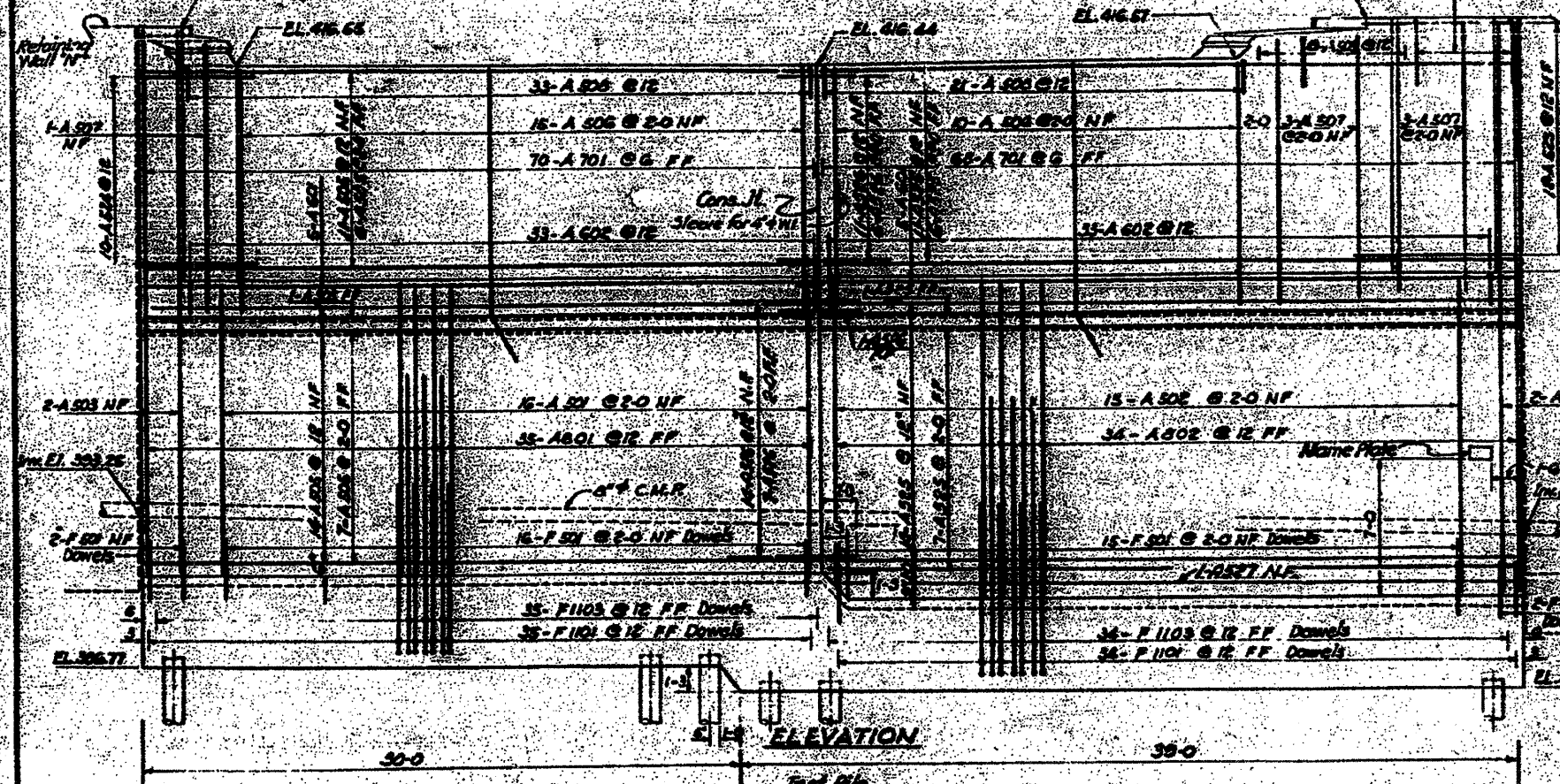


**CONSTRUCTION JOINT DETAIL**

**BAR SCHEDULE**

Mark	Req'd	Size	Length	Shape	Mark	Req'd	Size	Length	Shape
F501	35	#5	3-0	—	A 509	6	#5	7-0	□
F502	6	#5	34-9	—	A 510	1		8-4	□
F503	6	#5	39-0	—	A 511	2		9-0	□
					A 512	2		9-6	□
F601	26	#6	34-0	—	A 513	2		10-4	□
F602	20	#6	39-0	—	A 514	2		10-11	□
					A 515	2		9-8	□
					A 516	1		11-0	□
F801	110	#8	12-0	—	A 517	1		9-8	□
F802	28	#8	19-6	—	A 518	3		6-2	□
					A 519	1		2-5	□
					A 520	1		5-9	□
F1101	69	#11	12-3	→	A 521	3		3-6	□
F1102	91	#11	12-6	→	A 522	3		2-9	□
F1103	69	#11	17-2	→	A 523	12		9-9	□
F1104	47	#11	19-6	→	A 524	10		7-6	□
					A 525	39		33-9	□
					A 526	40		4-0	□
					A 527	1		39-3	□
A 501	16	#5	14-6	—	A 528	2	#5	4-11	□
A 502	15		15-9	—					
A 503	2		27-2	—	A 601	18	#6	34-9	□
A 504	2		26-4	—	A 602	66	#6	7-5	□
A 505	39		34-9	—					
A 506	25		12-0	—	A 701	138	#7	18-0	□
A 507	7		14-0	—	A 801	35	#8	14-0	□
A 508	56	#5	3-10	□	A 802	34	#8	16-1	□



**BILL OF MATERIAL**

Class X concrete	Cu. Yd.	451
Reinforcement bars	Lbs.	4,035
Furnishing concrete piles	L.R.	4560
Driving concrete piles	L.F.	4560
Test piles (concrete)	Ea.	1
Porous Granular Embankment	Cu. Yd.	176
Membrane Waterproofing	S.F.	45
6" C.M.P. Perforated (B.F.I.)	L.R.	69

*Incidental to cost of Class X Concrete*

**PILE DATA**

Type	Concrete
Length	40 Ft.
Capacity	40 Tons
No. Required	114 Ea.
Test Pile	1 Ea.

**NOTES**  
 See 5h. 1 for Gen. Notes  
 See 5h. 2 for Location  
 See 5h. 25 for Drainage Details  
 See 5h. 7 for Expansion Joint Detail at ends of abutments.  
 For pile details see sheet No. 24  
 Care shall be taken in placing reinforcement bars so as to clear anchor bolts.

STATE OF ILLINOIS  
 DEPARTMENT OF PUBLIC WORKS & BLDGS.  
 DIVISION OF HIGHWAYS  
 &  
 CITY OF EAST ST. LOUIS  
**EAST ST. LOUIS EXPRESSWAY**  
 L. & N. R.R. OVER WEST BOUND EXPWAY  
 RAMP "L", EAST BOUND EXPWAY AND RAMP "Y"  
 NORTH ABUTMENT  
 H. W. LOCHNER, INC.  
 ENGINEERS  
 DATE JULY 1960 CHICAGO, ILLINOIS SHEET NO. 23

Designed by: J. V.  
 Drawn by: N. B.  
 Checked by: L. K.

FOR INFORMATION ONLY