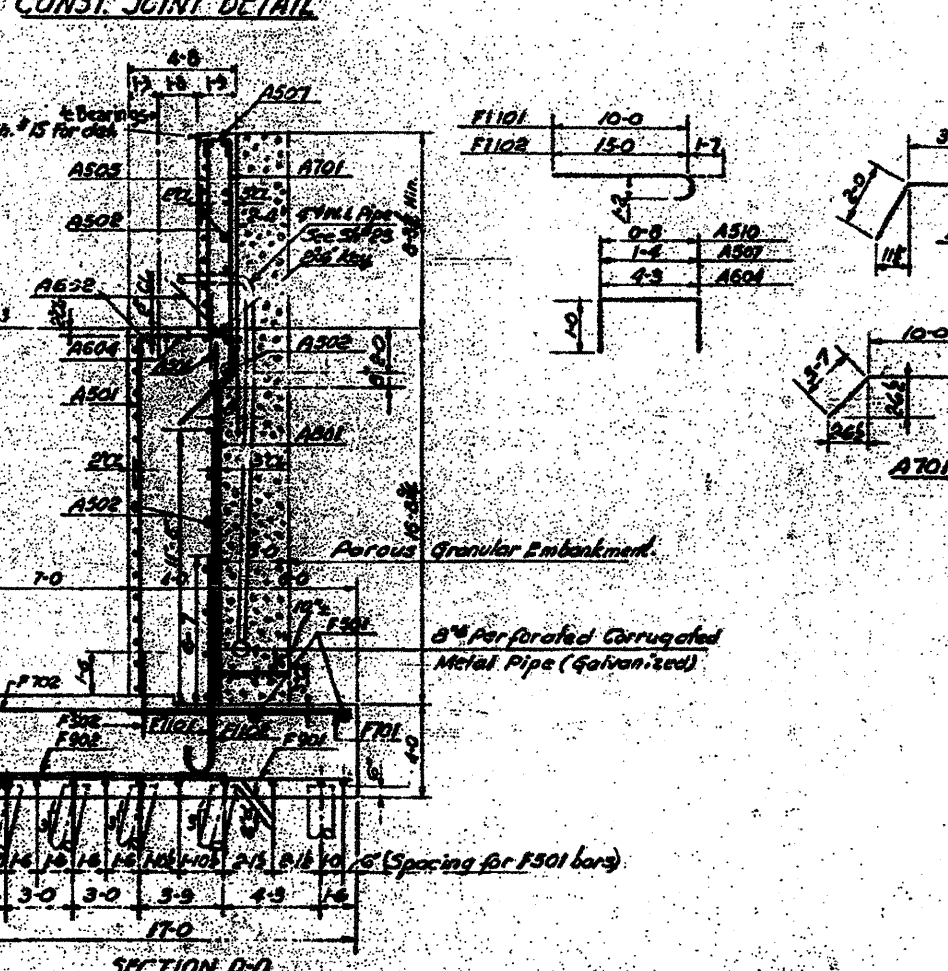
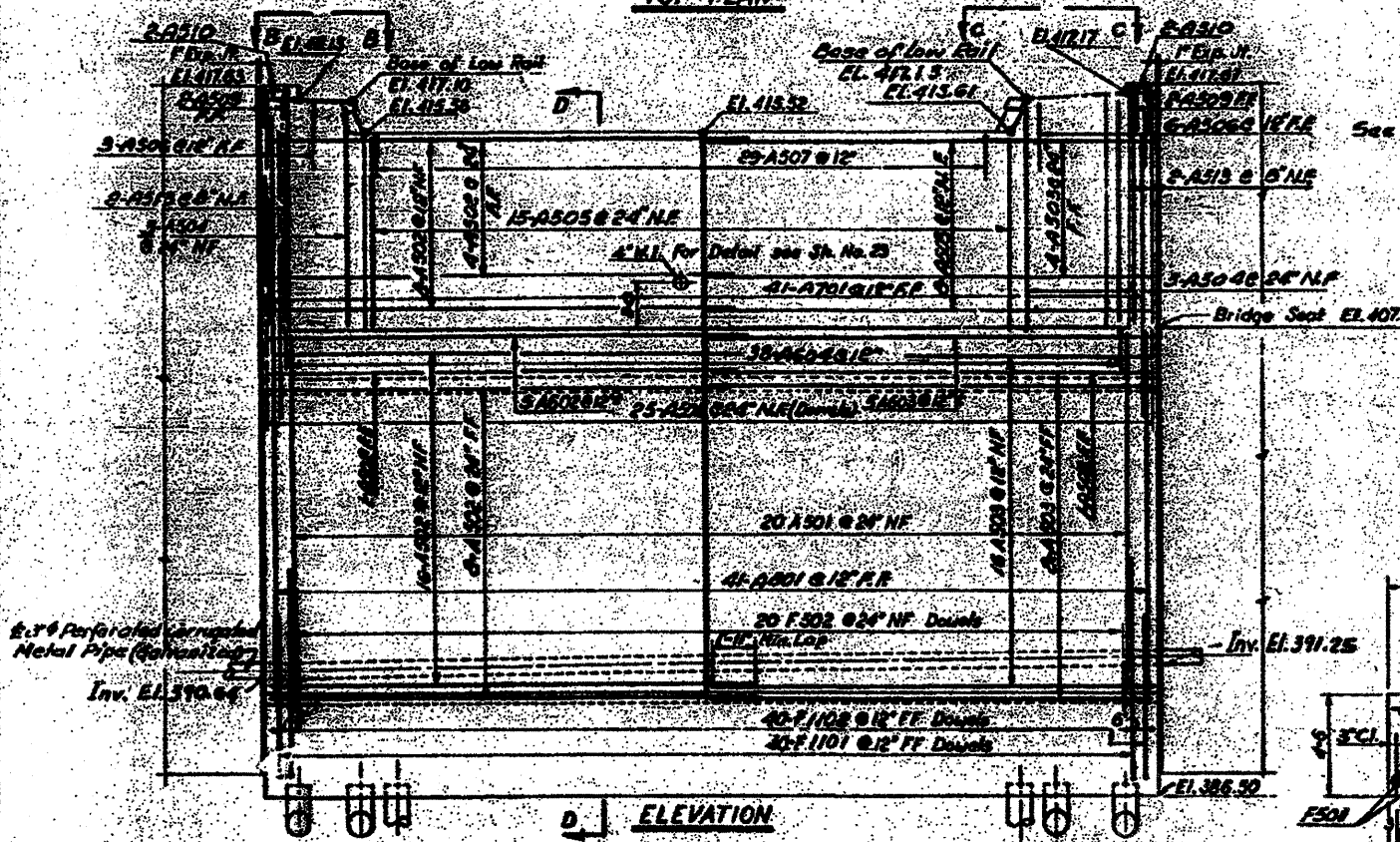


BAR SCHEDULE

Mark	No. Req'd	Size	Length	Shape
F301	16	5	39-6	—
F302	20	5	3-0	—
F701	24	7	9-0	—
F901	40	9	16-6	—
F902	39	9	11-0	—
F101	40	11	11-7	—
F102	40	11	18-7	—
F702	26	7	16-6	—
A301	20	5	16-0	—
A302	57	5	81-3	—
A303	37	5	20-2	—
A304	6	5	9-6	—
A305	15	5	8-1	—
A306	35	5	3-0	—
A307	35	5	3-4	—
A308	5	5	3-1	—
A309	8	5	1-10	—
A310	4	5	2-8	—
A311	3	5	4-3	—
A312	2	5	2-8	—
A313	4	5	10-2	—
A314	2	5	5-0	—
A601	5	6	2-1	—
A602	5	6	2-0	—
A603	5	6	2-0	—
A604	38	6	6-3	—
A701	41	7	15-7	—
A001	41	8	16-6	—



BILL OF MATERIAL

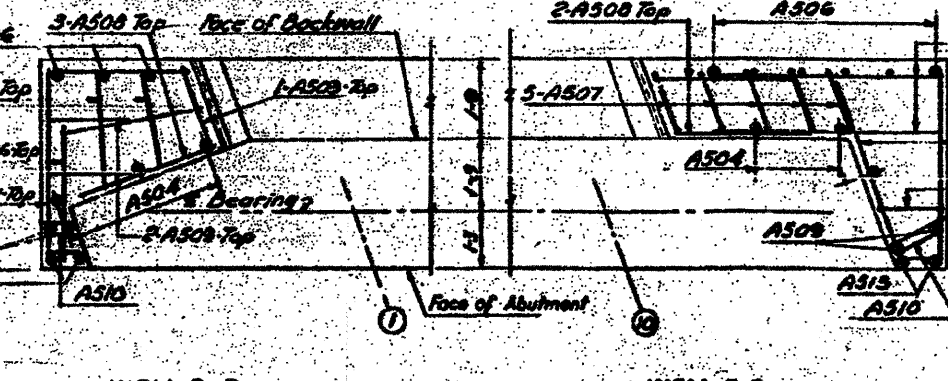
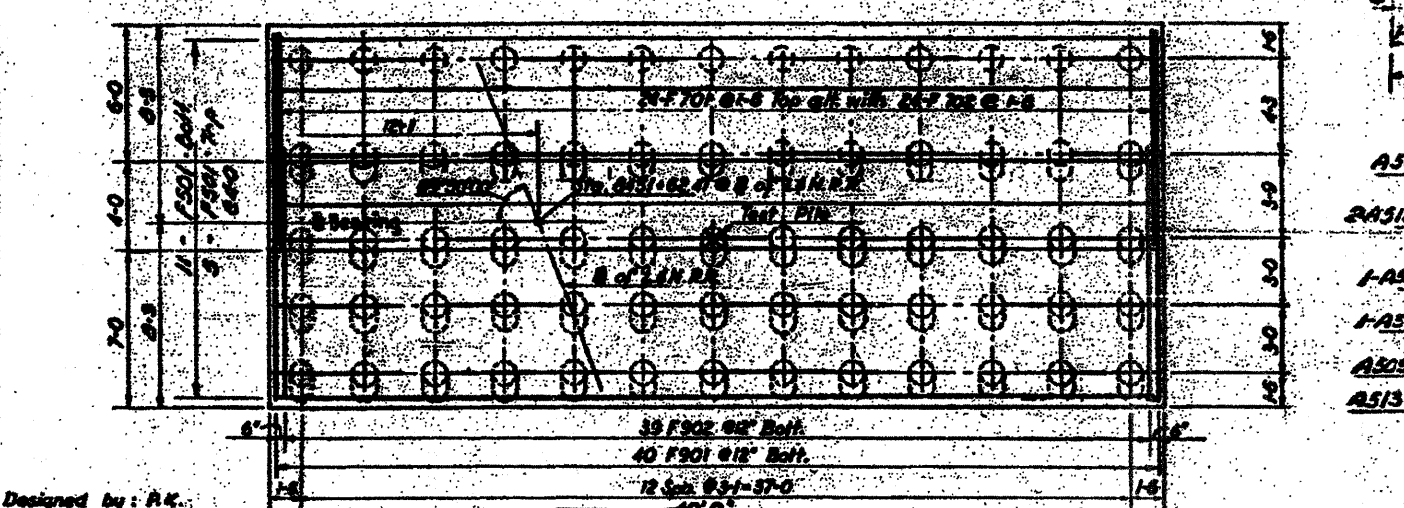
Class "X" Concrete	C.Y.	234
Reinforced Bars	Lb.	17,710
Furnishing Concrete Piles	Lb.	2,450
Driving Concrete Piles	Lb.	2,450
Test Pile (Concrete)	Each	1
Porous Granular Embankment	C.Y.	104
Membrane Water proofing	S.F.	40
5" CMP Perforated (Galv.)	L.F.	70

Incidental to cost of Class "X" Concrete

PILE DATA

Type	Concrete
Length	33 Ft
Capacity	40 Tons
No. Required	64 Piles
Test Pile	1 Pile

Notes:
 For pile details see Sh. #24.
 Care shall be taken in placing reinforcement bars so as to clear anchor bolts.
 For General Notes see Sh. #1.
 For Location see Sh. #2.
 See Sh. #7 for Expansion Joint Details of ends of abutments.



STATE OF ILLINOIS
 DEPARTMENT OF PUBLIC WORKS & BLDGS.
 DIVISION OF HIGHWAYS
 &
 CITY OF EAST ST. LOUIS
EAST ST. LOUIS EXPRESSWAY
 L. & N. R.R. OVER WEST BOUND EXPWAY.
 RAMP "L", EAST BOUND EXPWAY AND RAMP "T"
 SOUTH ABUTMENT
 H.W. LOCHNER, INC.
 ENGINEERS
 DATE JULY 1960 CHICAGO, ILLINOIS SHEET NO. 8

Designed by: A.C.
 Drawn by: T.L.
 Checked by: J.M.

FOR INFORMATION ONLY