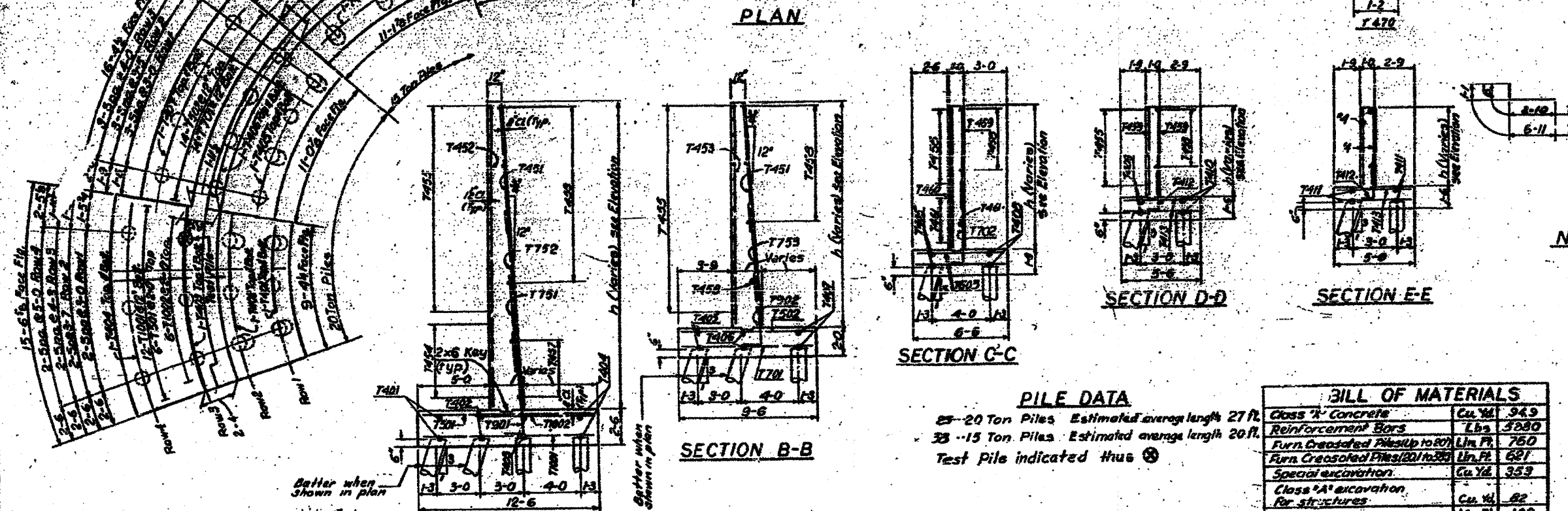
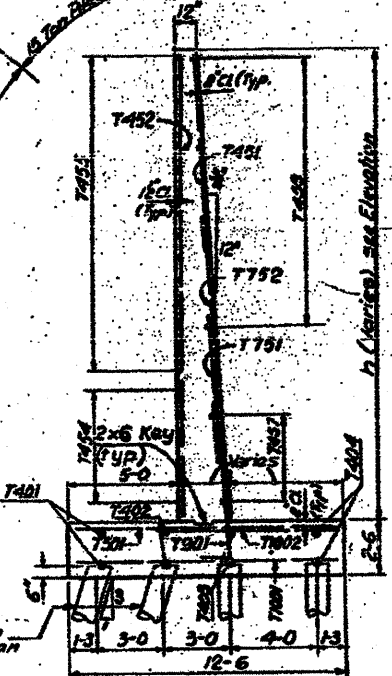


ELEVATION

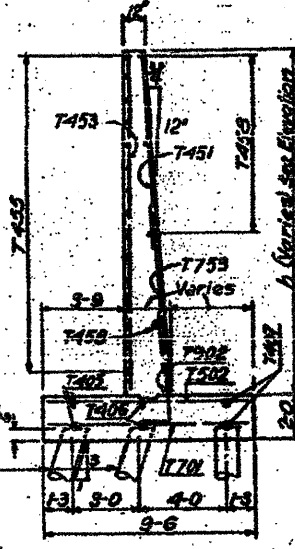
NOTE: Dimensions in "Elevation" measured along Face of Wall.



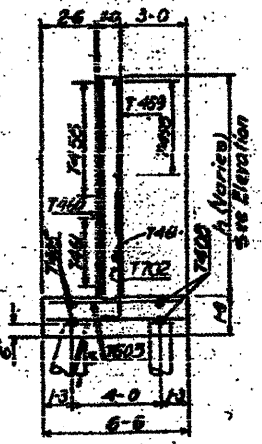
PLAN



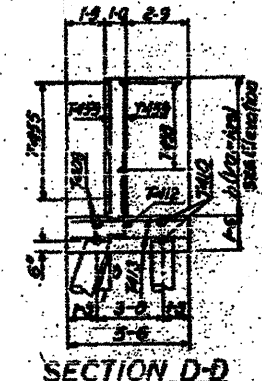
SECTION A-A



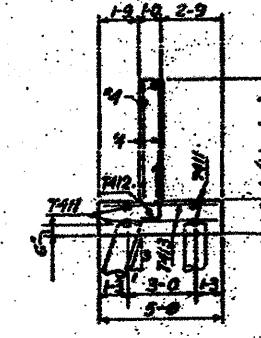
SECTION B-B



SECTION C-C



SECTION D-D



SECTION E-E

PILE DATA

25-20 Ton Piles Estimated average length 27 ft.
 33-15 Ton Piles Estimated average length 20 ft.
 Test Pile indicated thus ⊗

BILL OF MATERIALS

Class "A" Concrete	Cu. Yd.	343
Reinforcement Bars	Lbs.	3280
Furn. Casted Piles (up to 20')	Lin. Ft.	750
Furn. Casted Piles (20' to 27')	Lin. Ft.	621
Special excavation	Cu. Yd.	353
Class "A" excavation for structures	Cu. Yd.	82
8" Surf. C.M.P.		