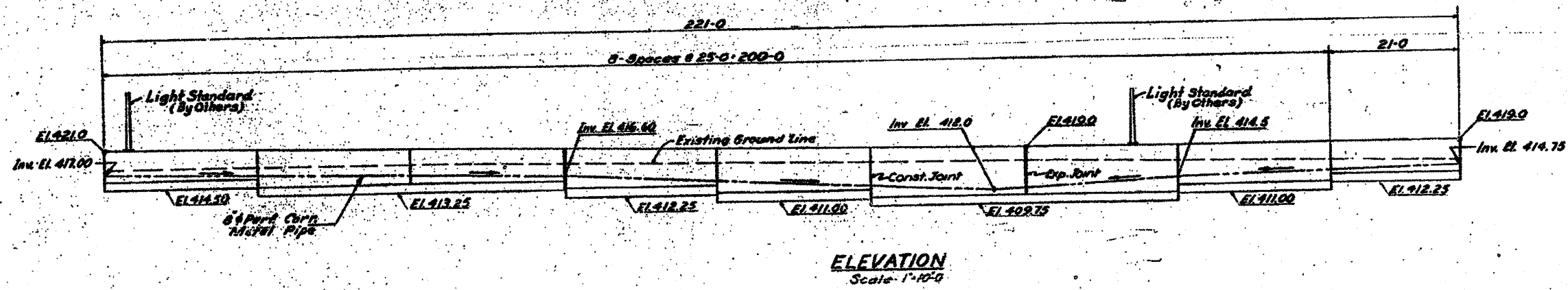
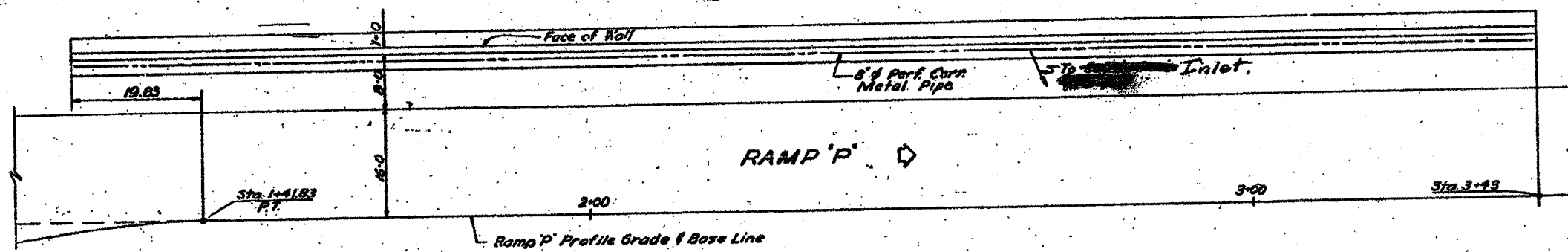


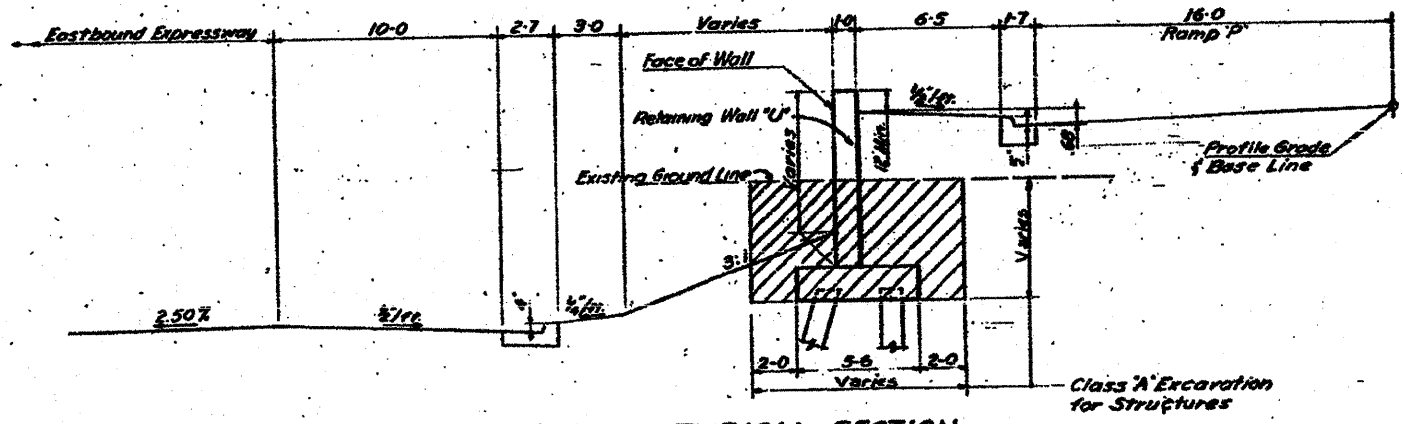
PROJECT NO.	SEC.	SHEET	TOTAL SHEETS
F.R.I. TO BRUNN ST. CLAB		79	46
DATE: APRIL 1958			



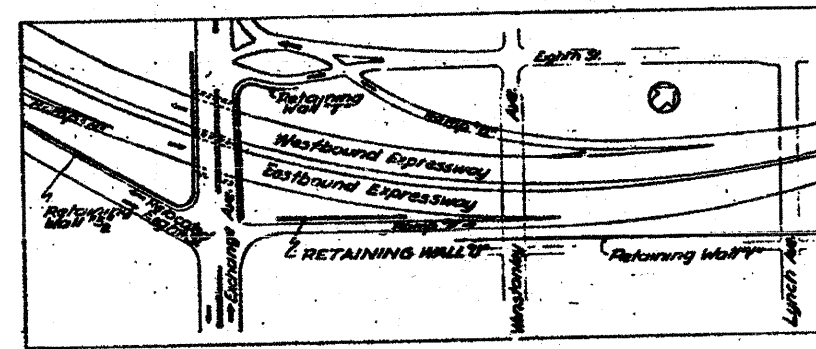
ELEVATION
Scale: 1"=10'-0"



PLAN
Scale: 1"=10'-0"



TYPICAL SECTION
LOOKING NORTHEAST



LOCATION PLAN

STATE OF ILLINOIS
DEPARTMENT OF PUBLIC WORKS & BLDGS.
DIVISION OF HIGHWAYS
CITY OF EAST ST. LOUIS
EAST ST. LOUIS EXPRESSWAY

RETAINING WALL "U"
GENERAL PLAN

H. W. LOCHNER, INC.
ENGINEERS

DATE: APRIL 1958 CHICAGO, ILLINOIS SHEET NO. 22

Drawn by: [Signature]
Checked by: A.T.

FOR INFORMATION ONLY

SHEET A-1B
236 VV