

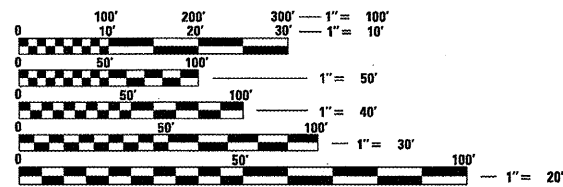
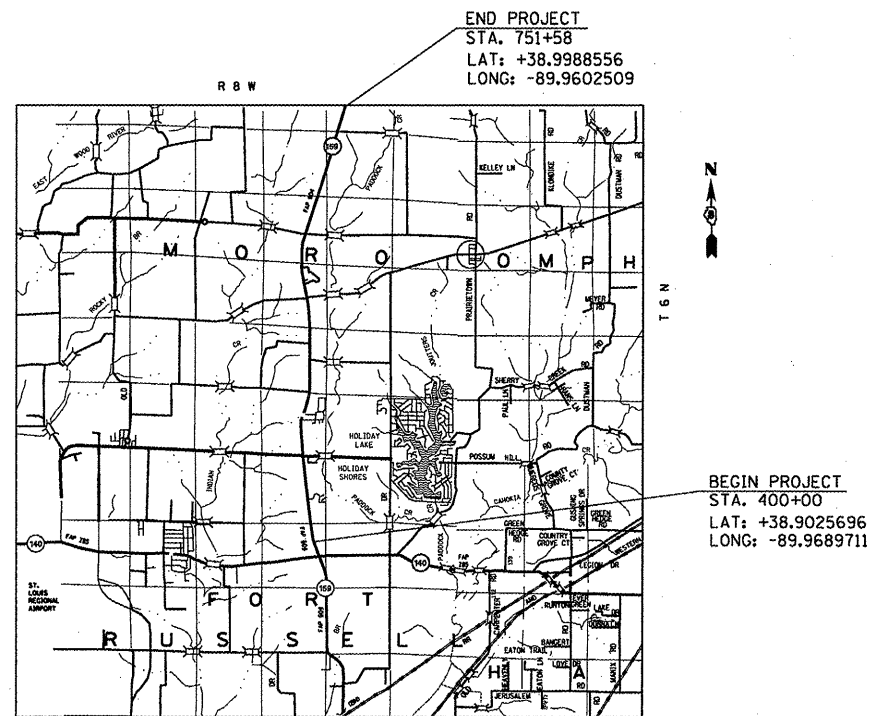
STATE OF ILLINOIS  
DEPARTMENT OF TRANSPORTATION  
DIVISION OF HIGHWAYS

**PROPOSED  
HIGHWAY PLANS**

FAP ROUTE 604 (IL 159)  
SECTION (101,102)RS-3  
PROJECT: ACF-0604(024)  
MADISON COUNTY  
RESURFACING  
C-98-073-10

F.A.P. RTE.	SECTION	COUNTY	TOTAL SHEETS	SHEET NO.
604	(101,102)RS-3	MADISON	13	1
FED. ROAD DIST. NO.	ILLINOIS	CONTRACT NO. 76D27		

FOR INDEX OF SHEETS, SEE SHEET NO. 2



FULL SIZE PLANS HAVE BEEN PREPARED USING STANDARD ENGINEERING SCALES. REDUCED SIZED PLANS WILL NOT CONFORM TO STANDARD SCALES. IN MAKING MEASUREMENTS ON REDUCED PLANS, THE ABOVE SCALES MAY BE USED.

J.U.L.I.E.  
JOINT UTILITY LOCATION INFORMATION FOR EXCAVATION  
1-800-892-0123  
OR 811

PROJECT ENGINEER: PATTI LEBEAU (618) 346-3179  
PROJECT MANAGER: CHERYL KEPLAR (618) 346-3186

CONTRACT NO. 76D27

**TRAFFIC DATA**  
2010 ADT = 5150  
2030 ADT = 6300  
SU = 3.9%  
MU = 3.9%

GROSS LENGTH = 35,158' = 6.66 MI  
NET LENGTH = 35,158' = 6.66 MI

STATE OF ILLINOIS  
DEPARTMENT OF TRANSPORTATION  
DIVISION OF HIGHWAYS

SUBMITTED *De & De*  
*May C. Hamis*  
DEPUTY DIRECTOR OF HIGHWAYS, REGION 5 ENGINEER

*January 29, 2010*  
*Scott E. Stitt P.E.*  
acting ENGINEER OF DESIGN AND ENVIRONMENT

*January 29, 2010*  
*Christine M. Reed*  
DIRECTOR OF HIGHWAYS, CHIEF ENGINEER

**PRINTED BY THE AUTHORITY  
OF THE STATE OF ILLINOIS**