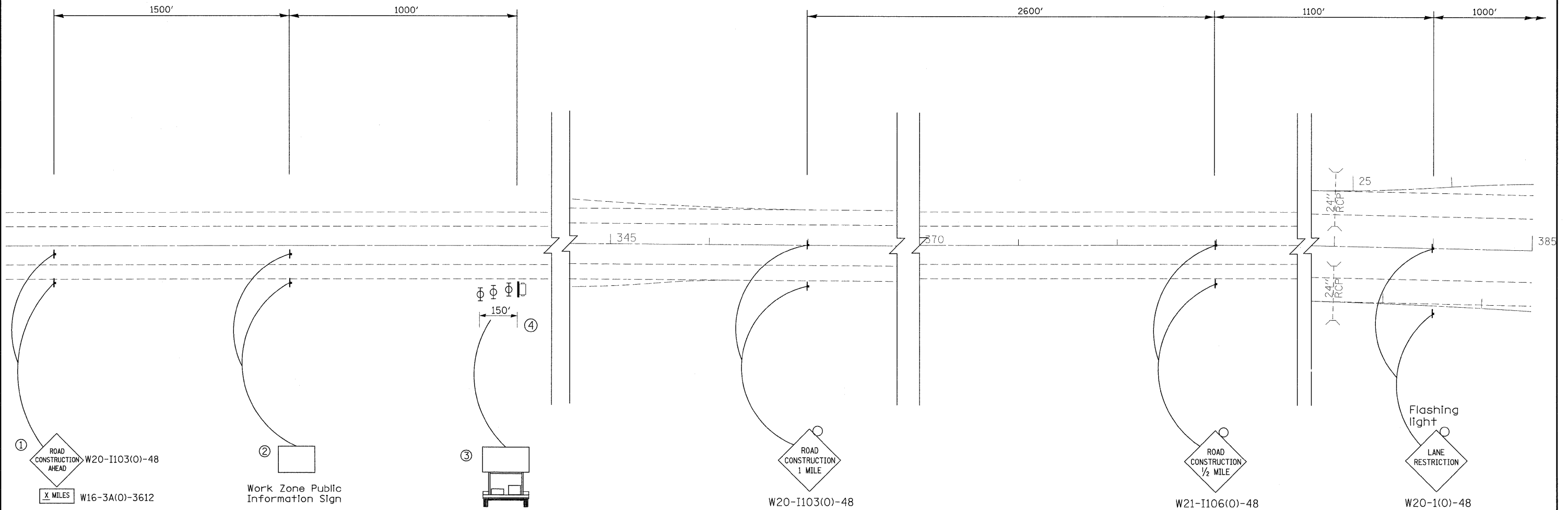


NOTE

TRAFFIC CONTROL SHALL BE INSTALLED AS SHOWN IN THE PLANS. THE COST OF THIS TRAFFIC CONTROL SHALL BE INCLUDED IN THE PAY ITEM "TRAFFIC CONTROL AND PROTECTION STANDARD 701411 (SPECIAL)."

TRAFFIC CONTROL FOR IL 111 SHALL BE HANDLED BY "TRAFFIC CONTROL AND PROTECTION STANDARD 701421."



SYMBOLS

☐ PORTABLE CHANGEABLE MESSAGE SIGN

⊥ SIGN

⊕ TYPE II BARRICADE, DRUM, OR VERTICAL BARRICADE WITH MONODIRECTIONAL FLASHING LIGHT

- ① THE ROAD CONSTRUCTION AHEAD SIGN SHALL BE LOCATED 3 TO 5 MILES IN ADVANCE OF THE PROJECT LIMITS.
- ② THE MESSAGE AND SIZE OF THE WORK ZONE PUBLIC INFORMATION SIGN SHALL BE AS SPECIFIED BY THE DEPARTMENT.
- ③ THE MESSAGE BOARD SHALL BE USED TO DISPLAY STATUS OF LANES WITHIN THE PROJECT. THE PRIMARY MESSAGES SHALL BE:
 "RIGHT LANE CLOSED" / " X MILES AHEAD"
 "LEFT LANE CLOSED" / " X MILES AHEAD"
 "ALL LANES OPEN"
- ④ THREE, TYPE II BARRICADES, DRUMS, OR VERTICAL BARRICADES AT 50' CENTERS.

FILE NAME =	USER NAME = gelinh	DESIGNED -	REVISD -
cr\pwork\pwork\gelinh\0145079\0876038-Sht-Staging.dgn		DRAWN -	REVISD -
	PLOT SCALE = 50.0000' / IN.	CHECKED -	REVISD -
	PLOT DATE = 12/8/2009	DATE -	REVISD -

**STATE OF ILLINOIS
DEPARTMENT OF TRANSPORTATION**

**TRAFFIC CONTROL &
PROTECTION PLAN**

SCALE: 1" = 50' SHEET NO. 1 OF 2 SHEETS STA. _____ TO STA. _____

F.A.I. RTE.	SECTION	COUNTY	TOTAL SHEETS	SHEET NO.
270	60-3HB-1-HDF	MADISON	12	4
CONTRACT NO. 76D30				
ILLINOIS FED. AID PROJECT				