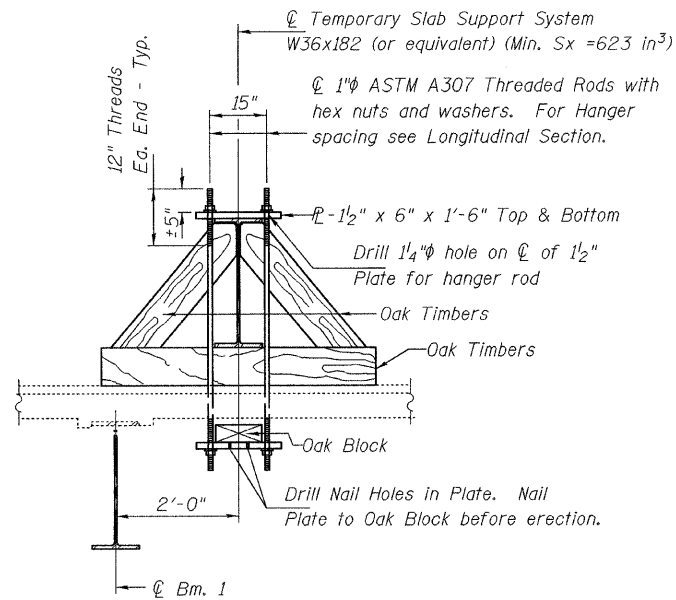
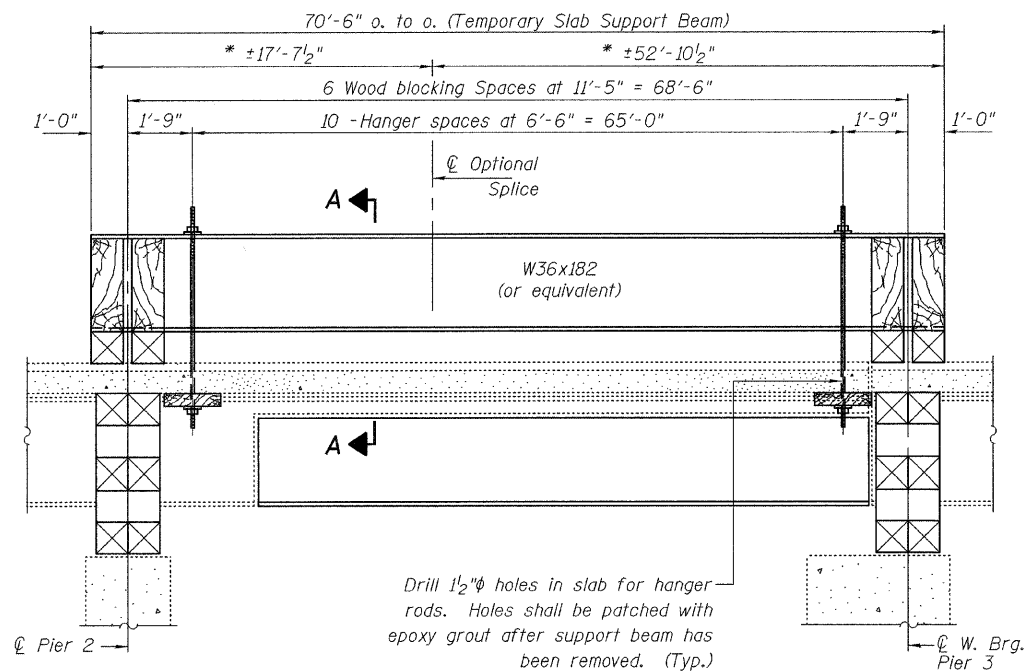


STATE OF ILLINOIS
DEPARTMENT OF TRANSPORTATION

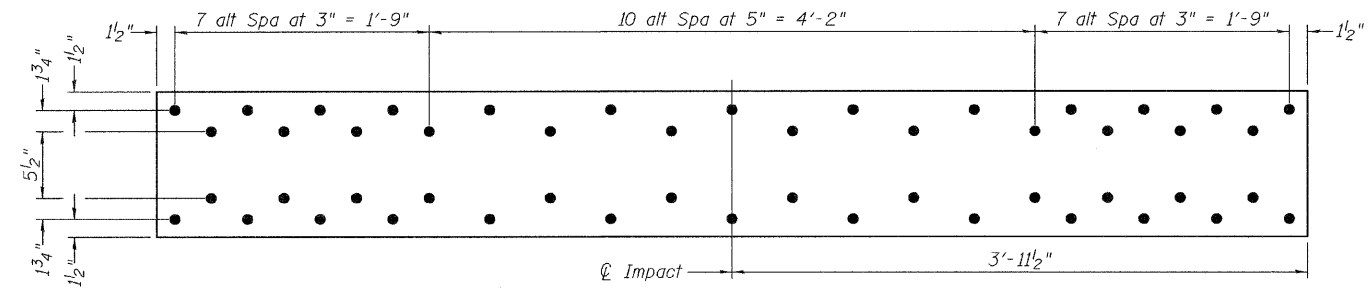


SECTION A-A
(Looking West)

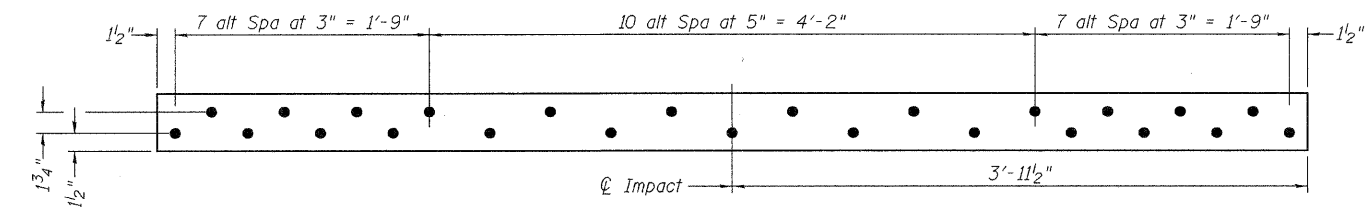
* These dimensions may vary for available beams in stock.
** Timber blocking is to be installed after support beam is allowed to deflect under its own weight.



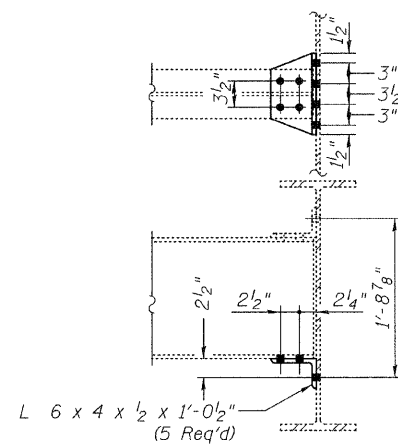
LONGITUDINAL SECTION
SUGGESTED TEMPORARY SLAB SUPPORT SYSTEM



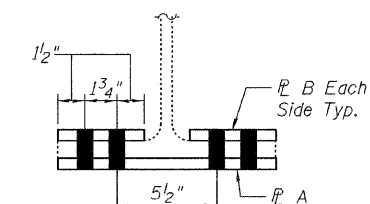
STRENGTHENING R A
(R 5/8" x 12" x 7'-11")
(2 Req'd)



STRENGTHENING R B
(R 5/8" x 4 3/4" x 7'-11")
(4 Req'd)



REPAIR C
CLIP L REPLACEMENT



REPAIR B
STRENGTHENING SECTION
(7/8" ϕ H.S. bolts in 1 5/16" ϕ holes.)

DESIGNED	A.T.H.
CHECKED	G.G.E.
DRAWN	Drew Christopher
CHECKED	A.T.H. G.G.E.

January 21, 2010

EXAMINED
A. Carl Perry
ENGINEER OF STRUCTURAL SERVICES

PASSED
Ralph E. Anderson
ENGINEER OF BRIDGES AND STRUCTURES

DETAILS
SN 060-0046

SHEET NO. 3	F.A.I. RTE.	SECTION	COUNTY	TOTAL SHEETS	SHEET NO.
	270	60 B-1-3, 60-1B-1-3, 60-(1,2,3)RS-1, 60-(2HBY, 2VHBY, 3HBY-1, 3VHBY, 3VBY)	Madison	12	7
8 SHEETS	FED. ROAD DIST. NO.	ILLINOIS FED. AID PROJECT	CONTRACT NO. 76D30		