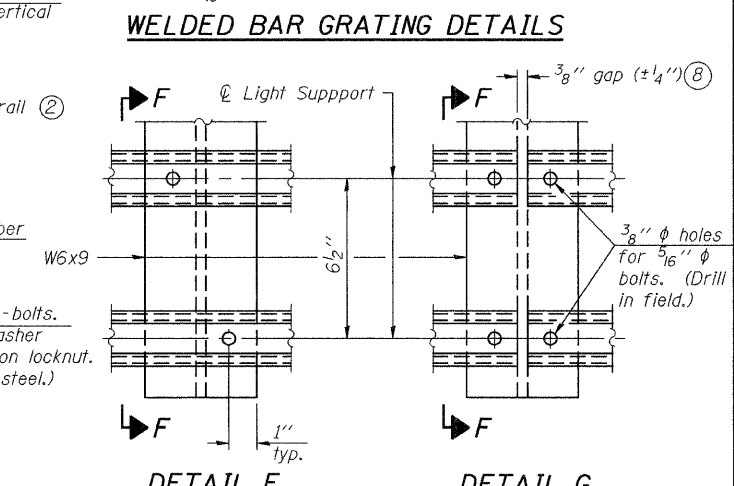
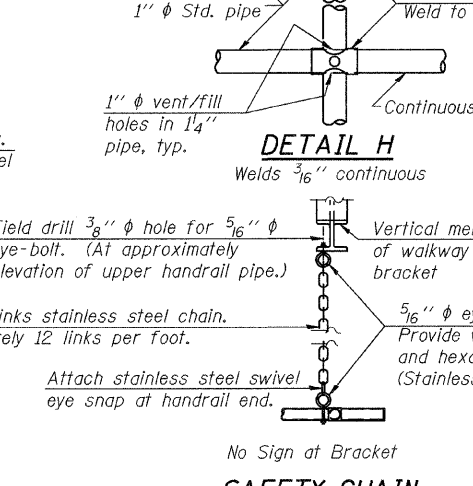
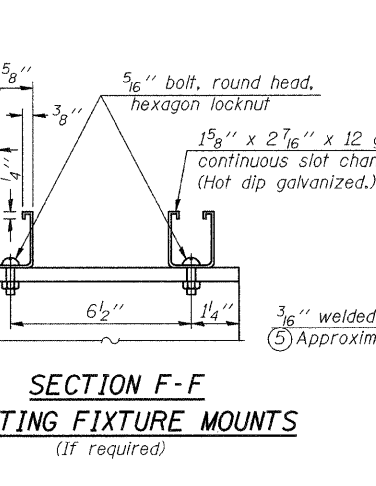
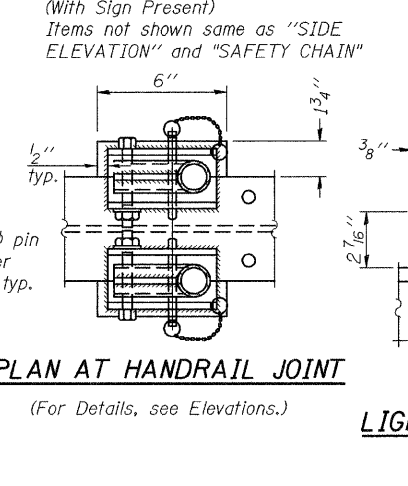
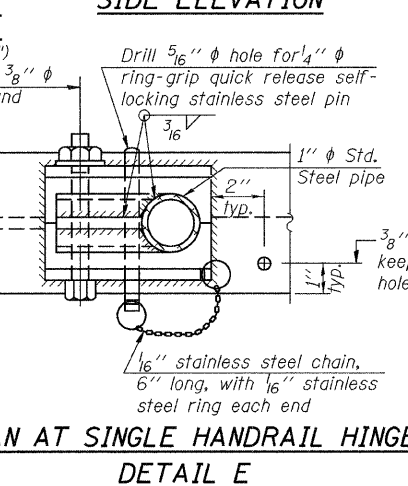
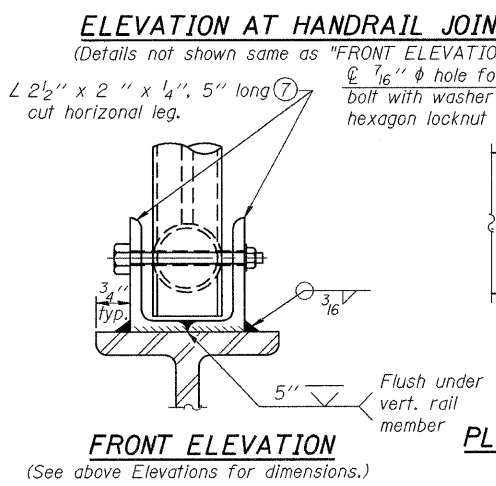
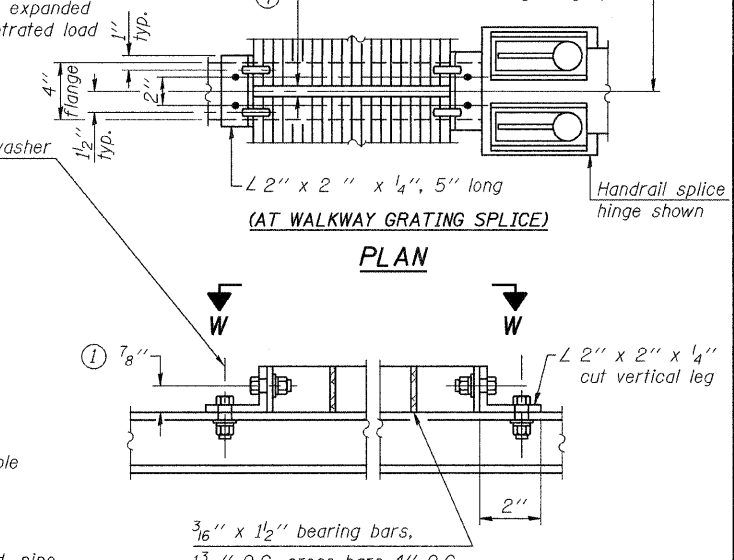
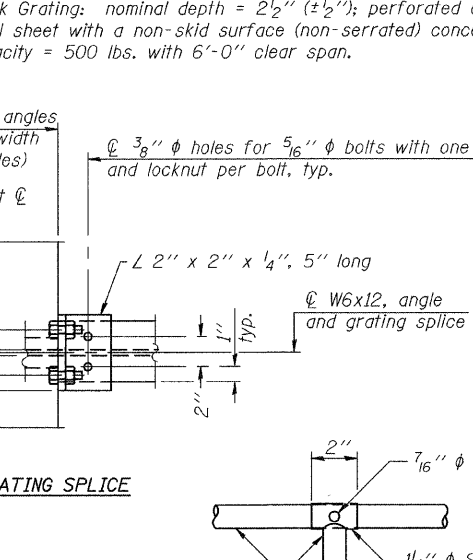
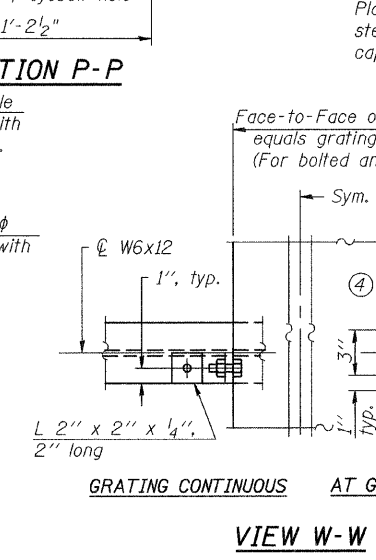
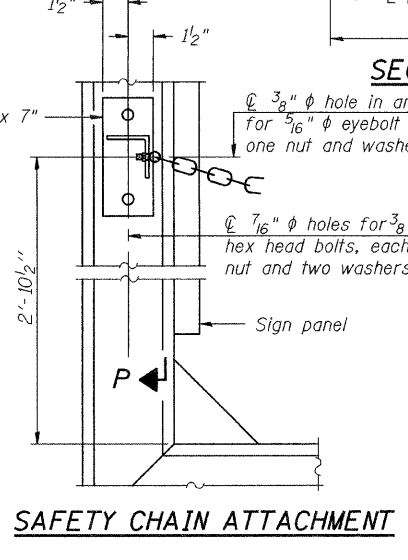
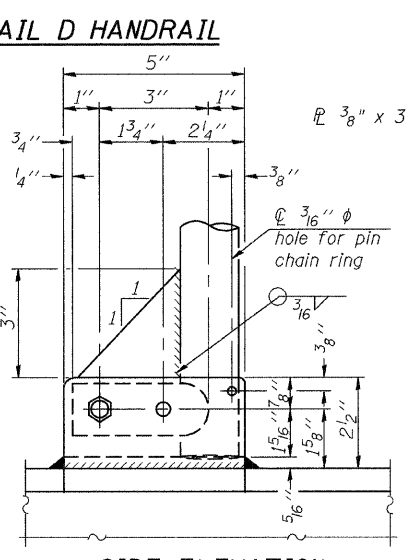
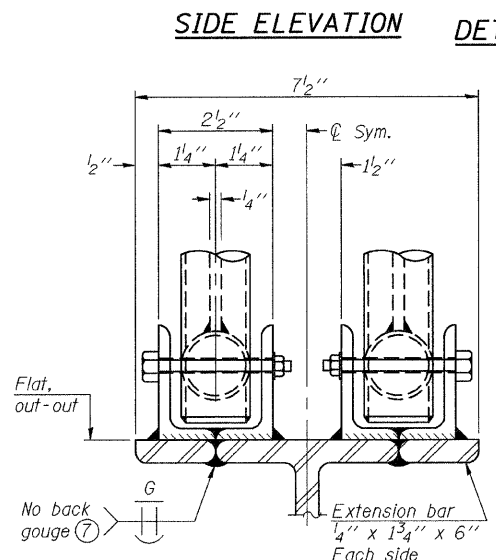
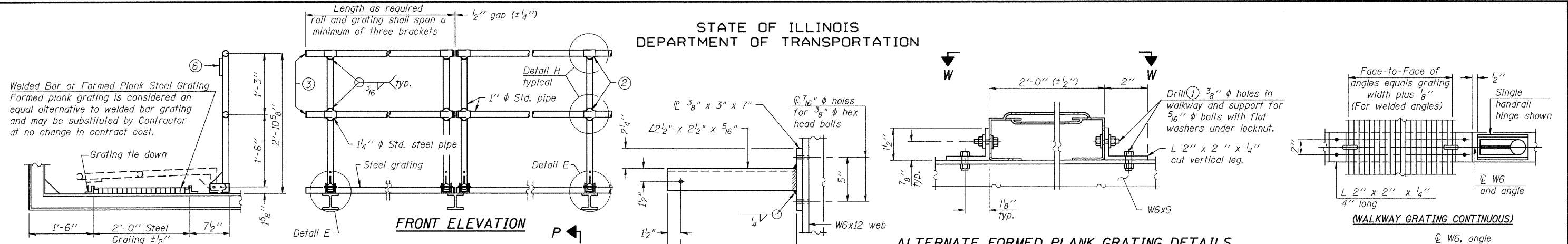


STATE OF ILLINOIS  
DEPARTMENT OF TRANSPORTATION



NOTES

- ① Drilling holes in grating may be done in shop or field, based on Contractor's preference and subject to accurate alignment. Field drilled holes must be touched up with galvanized paint.
- ② Horizontal rail member shall be continuous thru 1 1/4" pipe. Provide 7/16" hole in 1 1/4" pipe for 3/8" bolt. Field drill 7/16" hole in horizontal rail member. Provide washer and locknut for bolt. (Use 5/16" eyebolts in 7/16" holes on top rail at ends only.)
- ③ Install standard force-fit end caps or weld 1/8" end plates with 1/8" c.f.w. and grind smooth. (All rail ends.)
- ④ 3/8" (±1/4") gap between grating panels at splice.
- ⑤ Chain to be type 304L stainless steel suitable for prolonged exterior exposure. Approximately 3'-6" long chain per location. Maximum sag with handrail erected = 4".
- ⑥ 1/8" x 1/2" x 2" welded to handrail posts to protect locations that contact grating.
- ⑦ Extrusions may be used in lieu of details shown, with approval by Engineer.
- ⑧ Field cut ends of light support channels shall be free of burrs or hazardous projections and coated with zinc-rich primer or equivalent.

BRIDGE MOUNT SIGN STRUCTURES  
WALKWAY DETAILS  
SN 060-0046

DESIGNED	A.T.H.
CHECKED	G.G.E.
DRAWN	Drew Christopher
CHECKED	A.T.H. G.G.E.

EXAMINED	January 21, 2010
PASSED	Carl Pavesi ENGINEER OF STRUCTURAL SERVICES
	Ralph E. Anderson ENGINEER OF BRIDGES AND STRUCTURES

SHEET NO. 8 8 SHEETS	F.A.I. RTE. 270	SECTION 60 B-I-3, 60-1B-I-3, 60-(1,2,3)RS-1, 60-(2HBY, 2VHBY,3HBY-1,3VHBY,3VBY)	COUNTY Madison	TOTAL SHEETS 12	SHEET NO. 12
	FED. ROAD DIST. NO.	ILLINOIS FED. AID PROJECT	CONTRACT NO. 76D30		