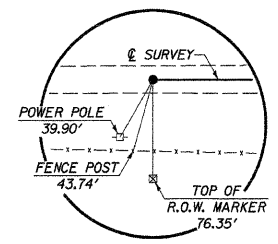
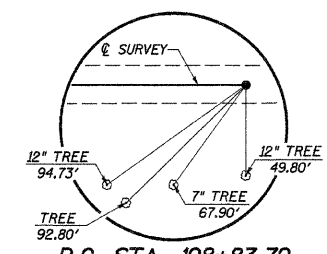


E. 1/2, SE. 1/4, SEC. 2, T. 26 N., R. 5 E., 4TH P.M.

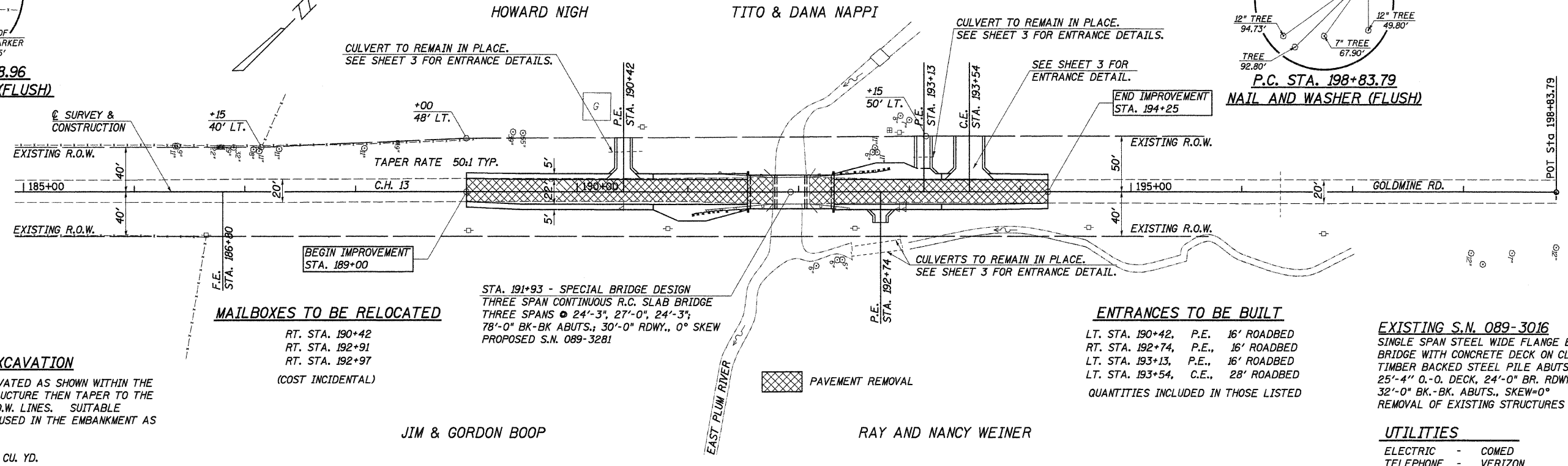
F.A.S. RTE.	SECTION	COUNTY	TOTAL SHEETS	SHEET NO.
62	04-00164-00-BR	STEPHENSON	15	5
STA. 185+00		TO STA. 198+00		
ILLINOIS		EAST PLUM RIVER		
CONTRACT NO. 85419				



P.T. STA. 174+68.96  
NAIL AND WASHER (FLUSH)



P.C. STA. 198+83.79  
NAIL AND WASHER (FLUSH)



**CHANNEL EXCAVATION**  
THE CHANNEL SHALL BE EXCAVATED AS SHOWN WITHIN THE LIMITS OF THE PROPOSED STRUCTURE THEN TAPER TO THE EXISTING CHANNEL AT THE R.O.W. LINES. SUITABLE EXCAVATED MATERIAL TO BE USED IN THE EMBANKMENT AS DIRECTED BY THE ENGINEER.

CHANNEL EXCAVATION = 620 CU. YD.

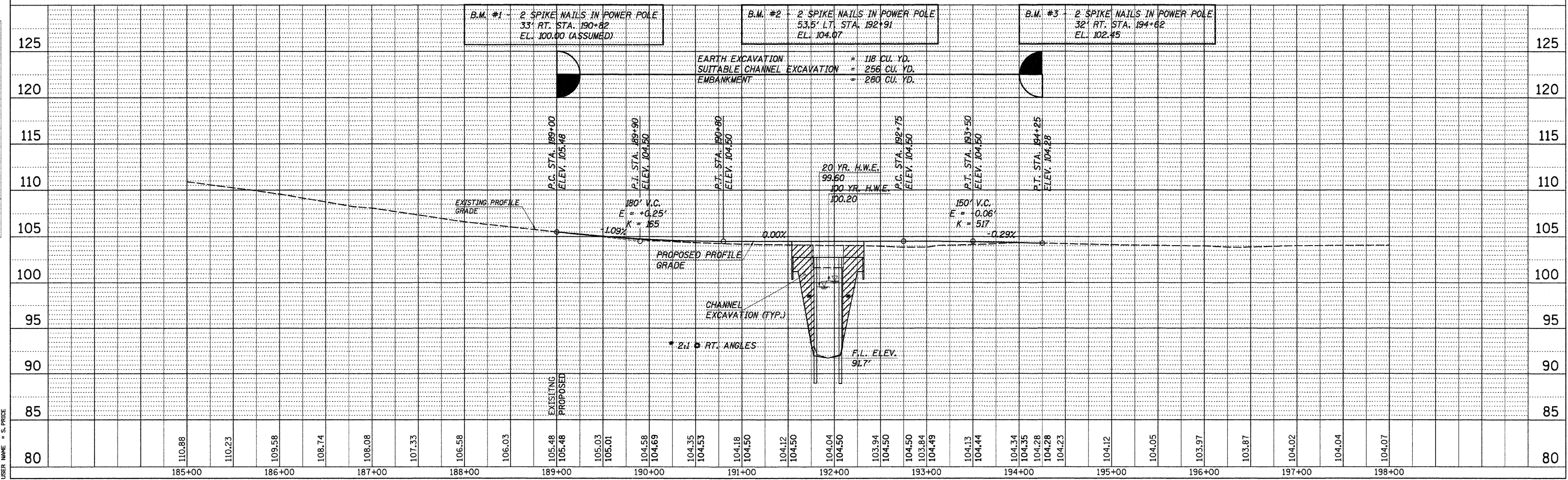
**MAILBOXES TO BE RELOCATED**  
RT. STA. 190+42  
RT. STA. 192+91  
RT. STA. 192+97  
(COST INCIDENTAL)

**ENTRANCES TO BE BUILT**  
LT. STA. 190+42, P.E. 16' ROADBED  
RT. STA. 192+74, P.E., 16' ROADBED  
LT. STA. 193+13, P.E., 16' ROADBED  
LT. STA. 193+54, C.E., 28' ROADBED  
QUANTITIES INCLUDED IN THOSE LISTED

**EXISTING S.N. 089-3016**  
SINGLE SPAN STEEL WIDE FLANGE BEAM BRIDGE WITH CONCRETE DECK ON CLOSED TIMBER BACKED STEEL PILE ABUTS., 25'-4" O.-O. DECK, 24'-0" BR. RDWY., 32'-0" BK.-BK. ABUTS., SKEW=0°  
REMOVAL OF EXISTING STRUCTURES = 1 EACH

**UTILITIES**  
ELECTRIC - COMED  
TELEPHONE - VERIZON  
GAS - NICOR

E. 1/2, SE. 1/4, SEC. 2, T. 26 N., R. 5 E., 4TH P.M.



DATE	
BY	
PLAN	
SURVEYED	
ALIGNED	
CHECKED	
NOTE BOOK	
NO. OF WAY CHECKED	
NO. OF FILE MARKS	

DATE	
BY	
PROFILE	
SURVEYED	
GRADES CHECKED	
REMARKS	
NO. OF WAY CHECKED	
NO. OF FILE MARKS	

PLOT DATE = 2/1/07  
FILE NAME = 4718BPP.DGN  
PLOT SCALE = 1" = 5' PRICE  
USER NAME = S. PRICE