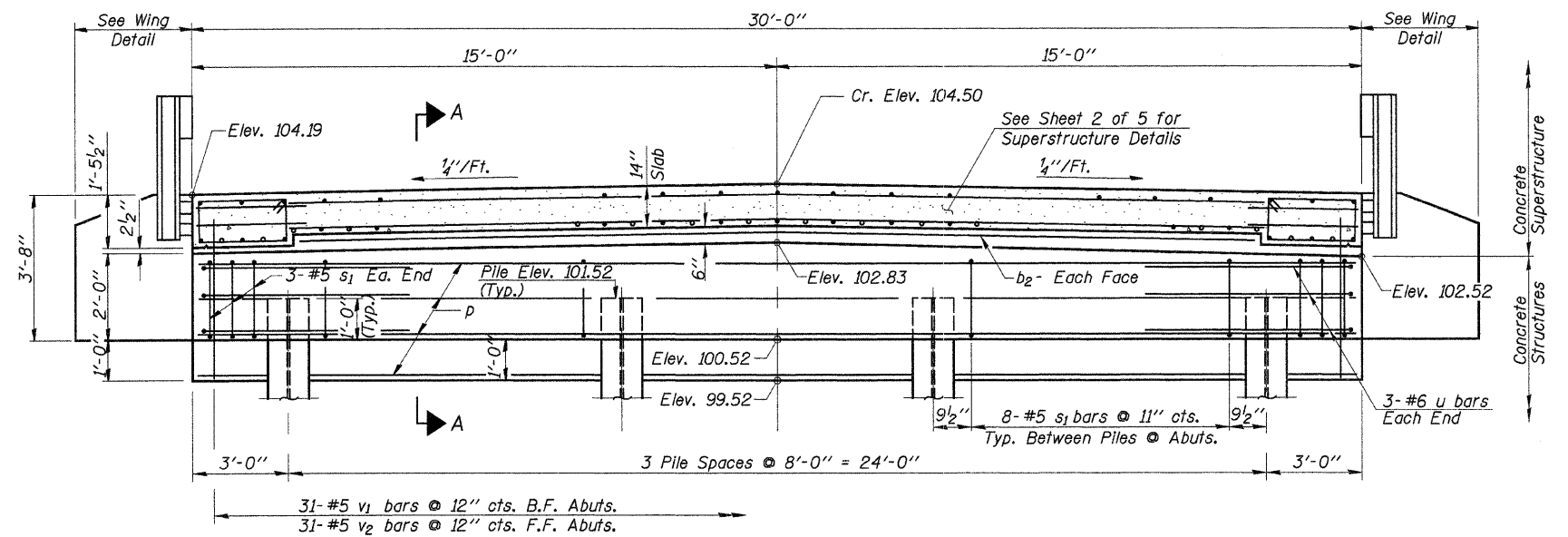
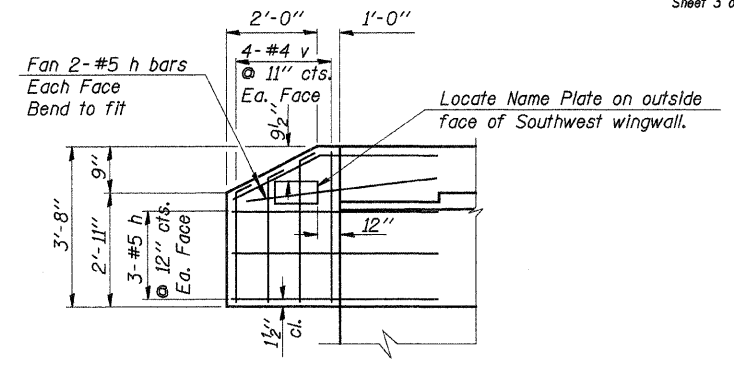


ROUTE NO.	SECTION	COUNTY	TOTAL SHEETS	SHEET NO.
F.A.S. 62	04-00164	STEPHENSON	15	9
C.H. 13	-00-BR			
ROAD DIST.	ILLINOIS	EAST PLUM RIVER		
Sheet 3 of 5			CONTRACT NO. 85419	

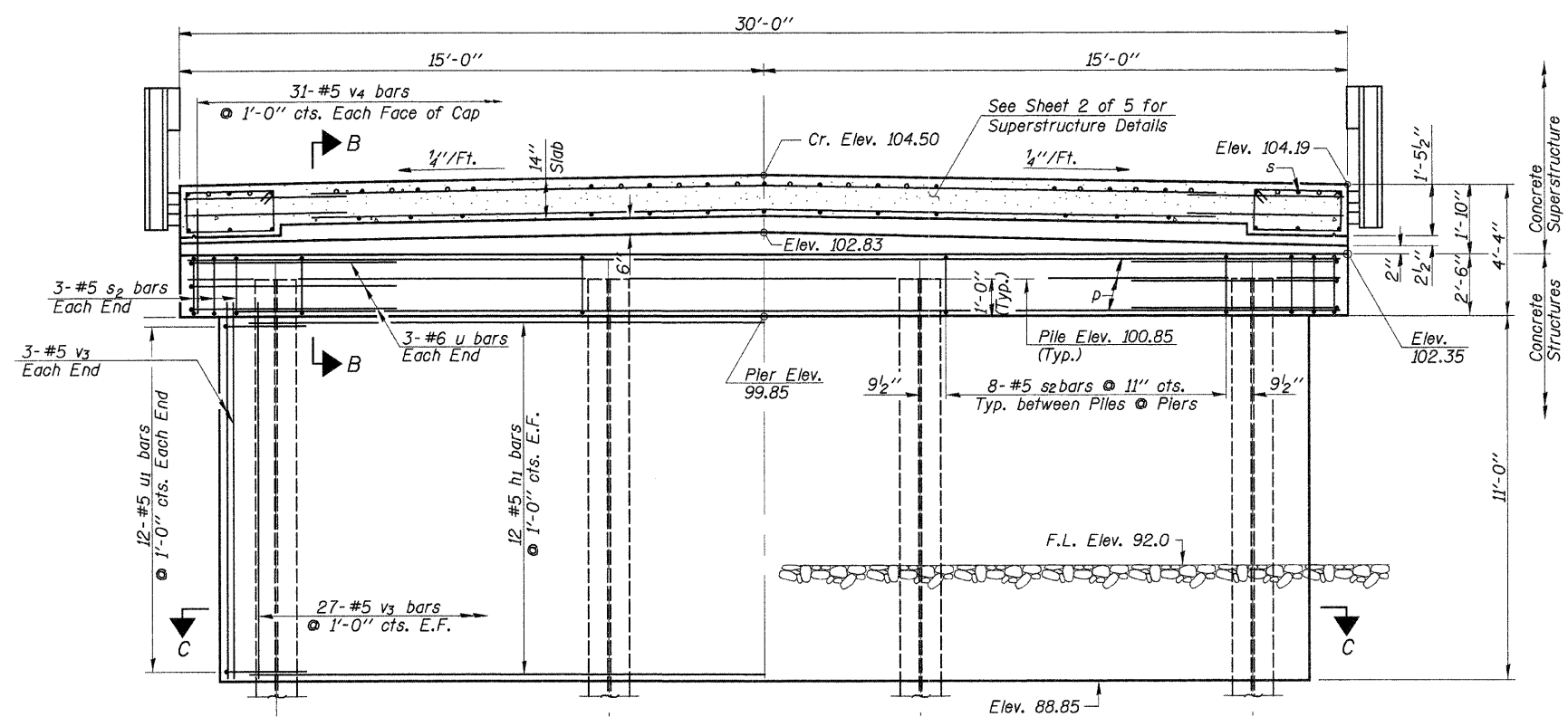


ABUTMENT FRONT ELEVATION

See Sheet 2 of 5 for Sections A-A & B-B.



WING DETAIL



PIER ELEVATION

ABUTMENT PILE DATA

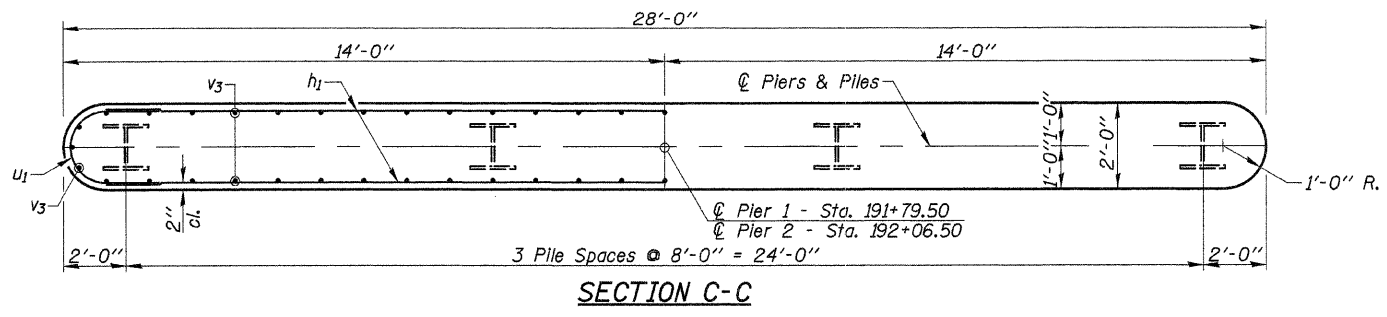
Type & Size	Steel HP12x53
No. Req'd. (2 Abuts.)	*8
Nominal Required Bearing	419 Kips/Pile
Allowable Resistance Available	139 Kips/Pile
Estimated Length	34 Feet/Pile

PIER PILE DATA

Type & Size	Steel HP12x53
No. Req'd. (2 Piers.)	*8
Nominal Required Bearing	419 Kips/Pile
Allowable Resistance Available	139 Kips/Pile
Estimated Length	34 Feet/Pile

*Includes 1 Test Pile to be driven in a permanent location at W. Abutment and Pier 2.

Note: The Steel H-Piles shall be according to AASHTO M270 Grade 50.



SECTION C-C

DESIGNED	A.R.K.
CHECKED	J.A.M.
DRAWN	S.A.P.
CHECKED	A.R.K. & J.A.M.

SUBSTRUCTURE DETAILS

COUNTY HIGHWAY 13
SECTION 04-00164-00-BR
STEPHENSON COUNTY
STATION 191+93

4440 ASH GROVE SPRINGFIELD, IL. 62711 (217) 793-8600 www.fehr-graham.com	FEHR-GRAHAM & ASSOCIATES, LLC ENGINEERING AND SCIENCE CONSULTANTS <small>REGISTERED PROFESSIONAL ENGINEERS & SURVEYORS IN ILLINOIS</small>	JOB NO.: 47188 FILE: 47188SUB.DGN DATE: 10/12/09
---	---	--