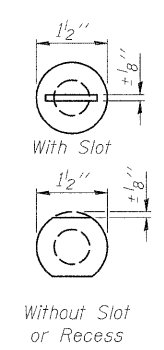
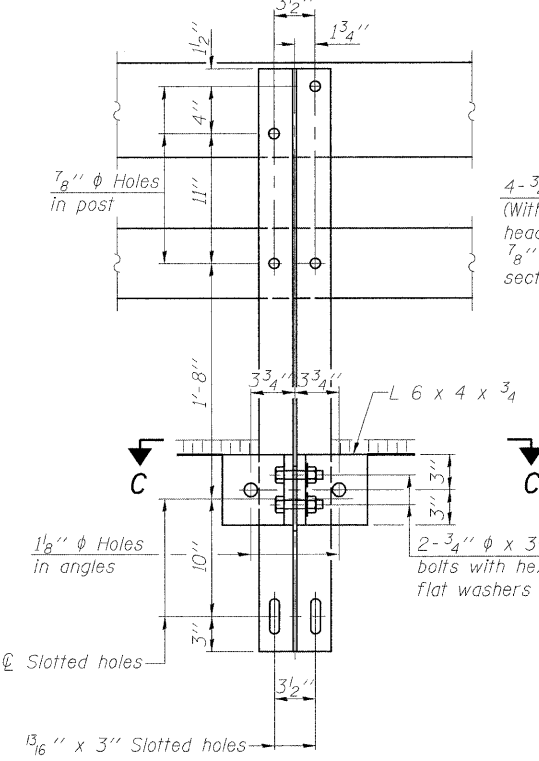


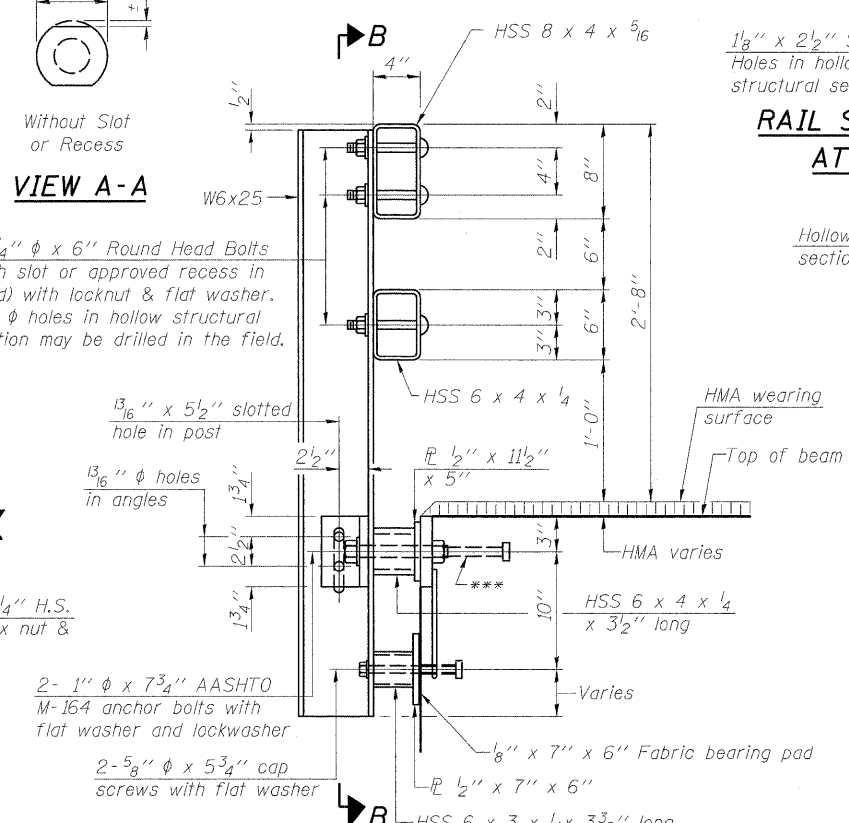
DETAIL OF 3/4"  $\phi$  ROUND HEAD BOLT



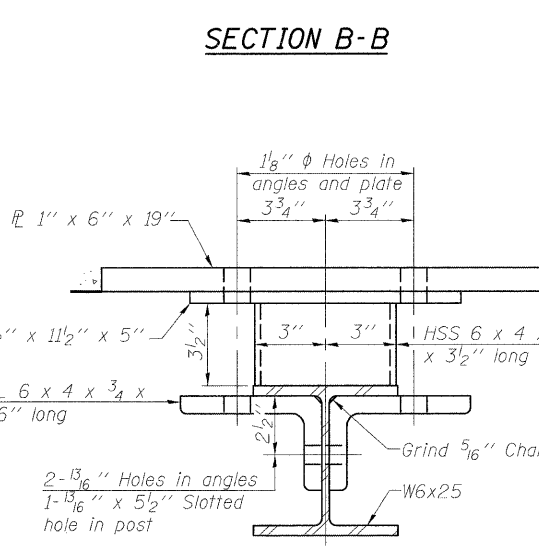
VIEW A-A



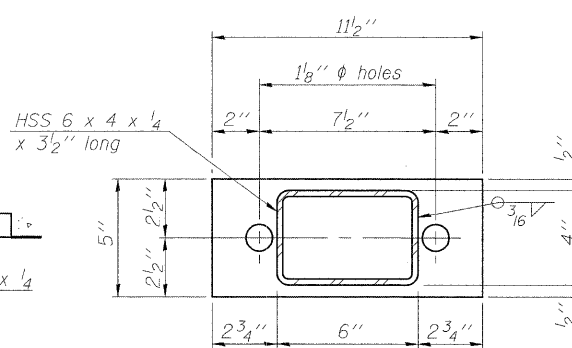
SECTION B-B



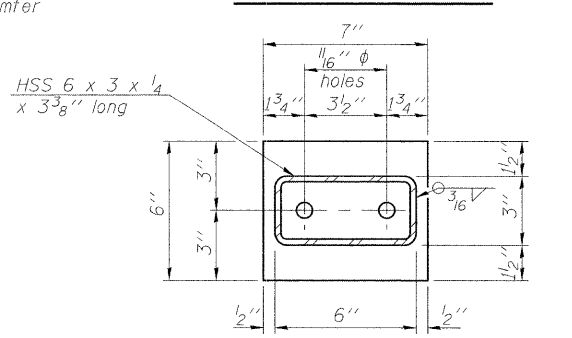
SECTION AT RAIL POST



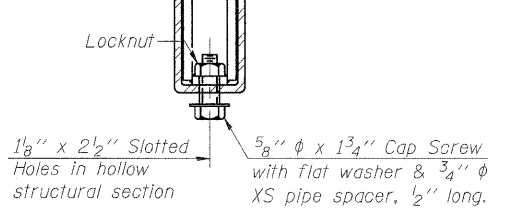
SECTION C-C



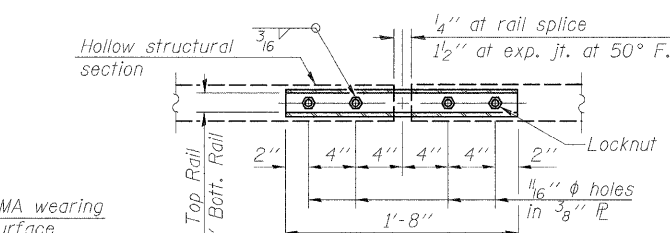
ANCHOR DEVICE



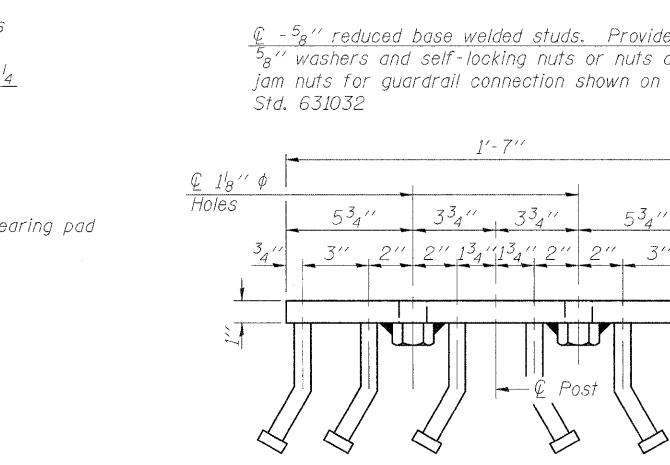
ANCHOR DEVICE



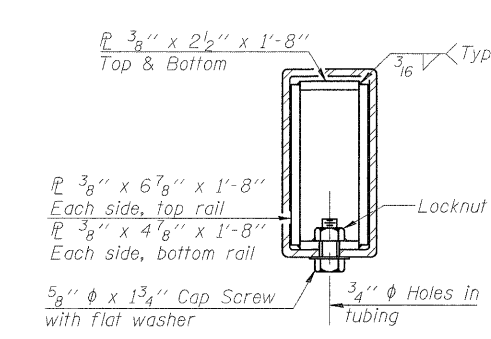
RAIL SPLICE CONNECTION AT EXPANSION JT.



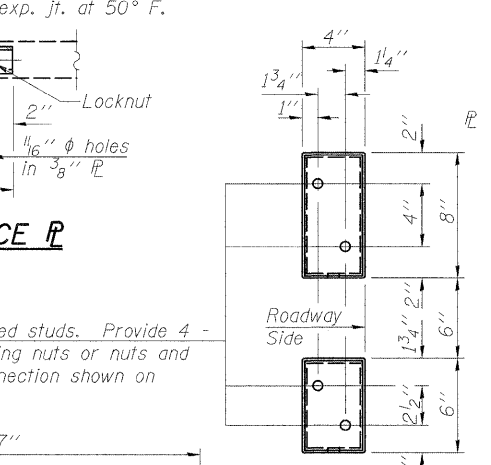
PLAN-BOTT. SPLICE TYPICAL



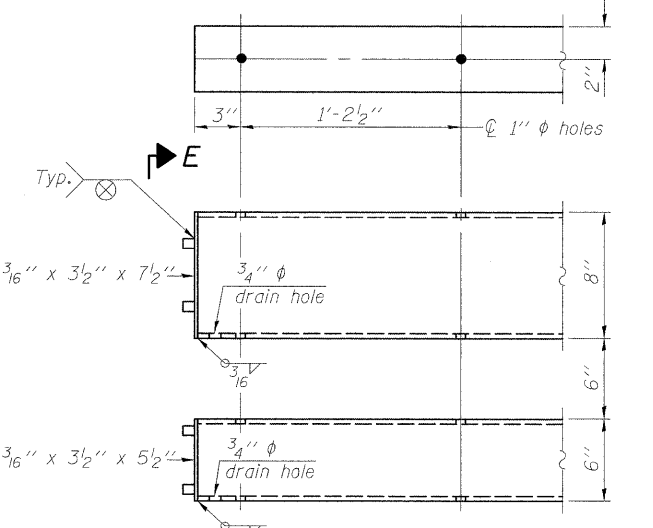
VIEW D-D



SECTION AT RAIL SPLICE



VIEW E-E



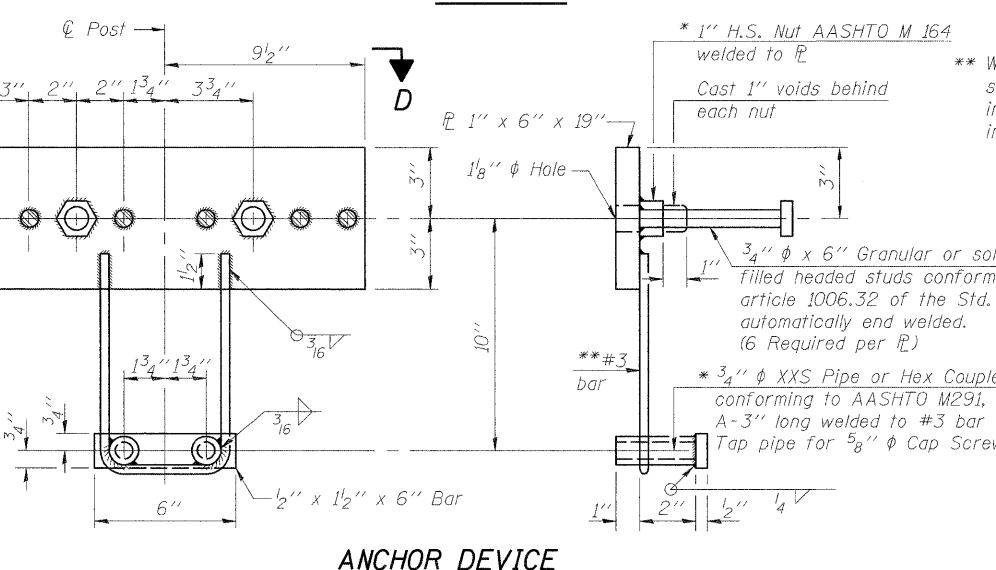
END OF RAIL DETAILS

Notes:  
 All field drilled holes shall be coated with an approved zinc rich paint before erection.  
 For multi-span bridges, sufficient 1/4" x 6" x 1'-2" galvanized steel shims shall be provided to align rail between adjacent spans. Cost included with Steel Railing, Type SM.  
 All steel rail members shall be galvanized according to Article 509.05 of the Standard Specifications.  
 \*\*\* The studs of the anchor devices shall be placed below the top reinforcement bars and the outermost longitudinal reinforcement bar shall be placed directly above the studs of the rail post anchor device.  
 \*\* Whenever the lower insert assemblies interfere with strand locations, the #3 bars shall be cut and adjusted in order to allow raising or lowering of the lower inserts. Maximum adjustment not to exceed 1/2".

BILL OF MATERIAL

Item	Unit	Quantity
Steel Railing, Type SM	Foot	278

STEEL RAILING, TYPE SM  
 LYNDON ROAD BRIDGE  
 OVER ROCK CREEK  
 F.A.S. ROUTE 76  
 SECTION 06-00183-00-BR  
 WHITESIDE COUNTY, ILLINOIS  
 STRUCTURE NUMBER 098-3077  
 STATION 223+86.00



ANCHOR DEVICE

\*Threaded areas shall be plugged or blocked off during casting of beam. Galvanized after fabrication.

LAYOUT: SMK 09/11/09  
 DRAWN: JDM 12/11/09  
 REVIEWED: SMK 12/11/09  
 12/10/2009 1:08 PM Job: 098-3077-0156-CADD-Struct-Steel-Railing.dgn

Corporate License Number 384-001-084  
 © Copyright Hanson Professional Services Inc. 2009  
**HANSON**  
 SHEET NO. 7  
 11 SHEETS  
 F.A.S. ROUTE 76  
 SECTION 06-00183-00-BR  
 COUNTY Whiteside  
 TOTAL SHEETS 21  
 SHEET NO. 14  
 CONTRACT NO. 85506  
 FED. ROAD DIST. NO. 2 ILLINOIS FED. AID PROJECT