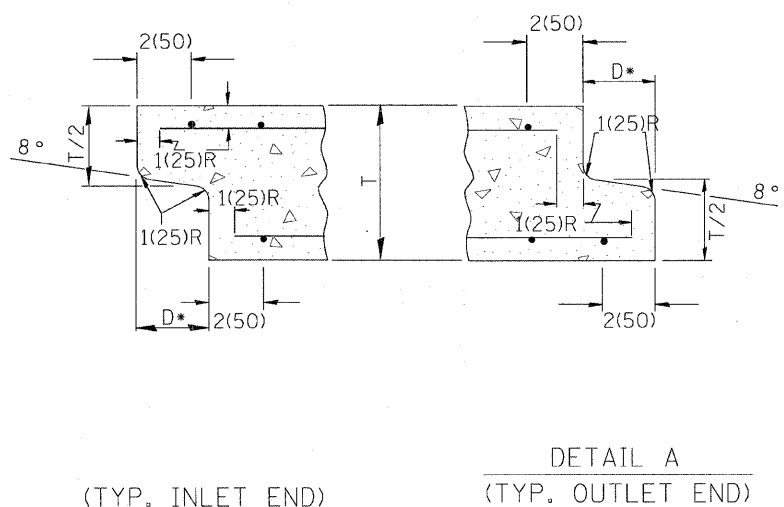
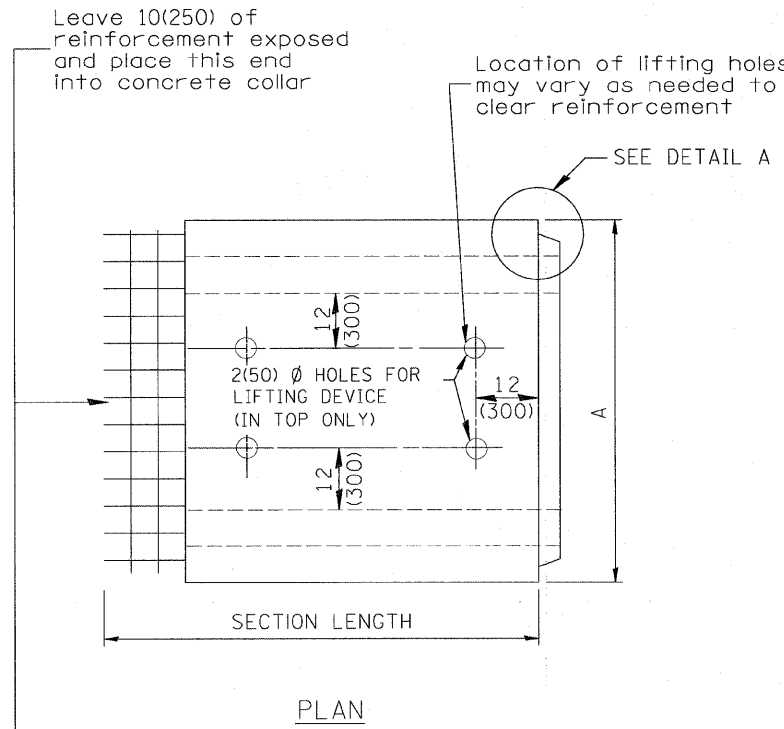


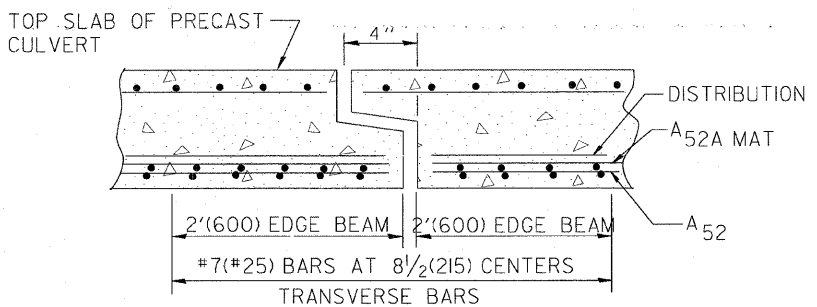
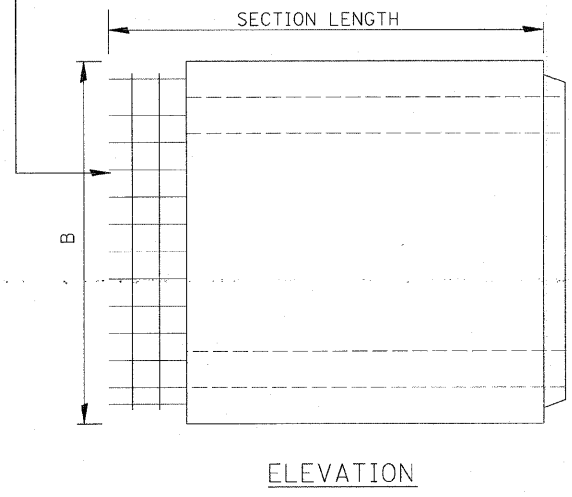
| F.A. RTE.           | SECTION        | COUNTY                    | TOTAL SHEETS | SHEET NO. |
|---------------------|----------------|---------------------------|--------------|-----------|
| 358                 | 86-00075-01-AS | WOODFORD                  | 66           | 30        |
| STA.                |                | TO STA.                   |              |           |
| FED. ROAD DIST. NO. |                | ILLINOIS FED. AID PROJECT |              |           |

(DIMENSIONS APPLY TO END SECTION AND BOX SECTION DETAILS)



NOTE: Inlet and outlet ends shall be compatible.

\*The D dimension shall conform to the manufacturer's standards.



TYP. JOINT SHOWING EDGE BEAM REINFORCEMENT

NOTE: The additional Reinforcing Steel required for edge beams shall have the same length as As2A. The required area, As10, may be combined with As2 in a single mat or placed in a separate layer as shown above. The additional Steel may be Welded Wire Fabric or grade 60 Deformed Bars.

(See GENERAL NOTES on sheet 1 of 2)

| SPAN X RISE<br>ft (mm) | T<br>in (mm) | A              | B              | C<br>in (mm) | E<br>in (mm) | F             | G             | H<br>in (mm)  | SLOPE<br>(Y : X) |
|------------------------|--------------|----------------|----------------|--------------|--------------|---------------|---------------|---------------|------------------|
| 2x2 (600x600)          | 4(100)       | 32(815)        | 32(815)        | 4(100)       | 36(915)      | 36(915)       | 12(305)       | 12(305)       | 1 : 3            |
| 2x3 (600x900)          | 4(100)       | 32(815)        | 3'-8" (1.12m)  | 4(100)       | 24(610)      | 4'-0" (1.22m) | 20(510)       | 16(410)       | 1 : 3            |
| 3x2 (900x600)          | 4(100)       | 3'-8" (1.12m)  | 32(815)        | 4(100)       | 36(915)      | 36(915)       | 12(305)       | 12(305)       | 1 : 3            |
| 3x2.5 (900x750)        | 4(100)       | 3'-8" (1.12m)  | 38(965)        | 4(100)       | 30(760)      | 3'-6" (1.07m) | 16(410)       | 14(355)       | 1 : 3            |
| 3x3 (900x900)          | 4(100)       | 3'-8" (1.12m)  | 3'-8" (1.12m)  | 4(100)       | 24(610)      | 4'-0" (1.22m) | 20(510)       | 16(410)       | 1 : 3            |
| 4x2 (1200x600)         | 5(125)       | 4'-10" (1.48m) | 34(865)        | 5(125)       | 36(915)      | 36(915)       | 12(305)       | 12(305)       | 1 : 3            |
| 4x3 (1200x900)         | 5(125)       | 4'-10" (1.48m) | 3'-10" (1.17m) | 5(125)       | 24(610)      | 4'-0" (1.22m) | 20(510)       | 16(410)       | 1 : 3            |
| 4x4 (1200x1200)        | 5(125)       | 4'-10" (1.48m) | 4'-10" (1.48m) | 5(125)       | 24(610)      | 4'-0" (1.22m) | 24(610)       | 24(610)       | 1 : 2            |
| 4x5 (1200x1500)        | 5(125)       | 4'-10" (1.48m) | 5'-10" (1.78m) | 5(125)       | 24(610)      | 4'-0" (1.22m) | 36(915)       | 24(610)       | 1 : 2            |
| 4x6 (1200x1800)        | 5(125)       | 4'-10" (1.48m) | 6'-10" (2.09m) | 5(125)       | 24(610)      | 4'-0" (1.22m) | 4'-0" (1.22m) | 4'-0" (1.22m) | 1 : 2            |
| 5x2 (1500x600)         | 6(150)       | 6'-0" (1.83m)  | 36(915)        | 6(150)       | 36(915)      | 36(915)       | 12(305)       | 12(305)       | 1 : 3            |
| 5x3 (1500x900)         | 6(150)       | 6'-0" (1.83m)  | 4'-0" (1.22m)  | 6(150)       | 24(610)      | 4'-0" (1.22m) | 20(510)       | 16(410)       | 1 : 3            |
| 5x4 (1500x1200)        | 6(150)       | 6'-0" (1.83m)  | 5'-0" (1.52m)  | 6(150)       | 24(610)      | 4'-0" (1.22m) | 24(610)       | 24(610)       | 1 : 2            |
| 5x5 (1500x1500)        | 6(150)       | 6'-0" (1.83m)  | 6'-0" (1.83m)  | 6(150)       | 24(610)      | 4'-0" (1.22m) | 36(915)       | 24(610)       | 1 : 2            |
| 6x2 (1800x600)         | 7(175)       | 7'-2" (2.17m)  | 38(965)        | 7(175)       | 36(915)      | 36(915)       | 12(305)       | 12(305)       | 1 : 3            |
| 6x3 (1800x900)         | 7(175)       | 7'-2" (2.17m)  | 4'-2" (1.27m)  | 7(175)       | 24(610)      | 4'-0" (1.22m) | 20(510)       | 16(410)       | 1 : 3            |
| 6x4 (1800x1200)        | 7(175)       | 7'-2" (2.17m)  | 5'-2" (1.57m)  | 7(175)       | 24(610)      | 4'-0" (1.22m) | 24(610)       | 24(610)       | 1 : 2            |
| 6x5 (1800x1500)        | 7(175)       | 7'-2" (2.17m)  | 6'-2" (1.88m)  | 7(175)       | 24(610)      | 4'-0" (1.22m) | 36(915)       | 24(610)       | 1 : 2            |
| 6x6 (1800x1800)        | 7(175)       | 7'-2" (2.17m)  | 7'-2" (2.17m)  | 7(175)       | 24(610)      | 4'-0" (1.22m) | 4'-0" (1.22m) | 24(610)       | 1 : 2            |
| 7x4 (2100x1200)        | 8(200)       | 8'-4" (2.54m)  | 5'-4" (1.63m)  | 8(200)       | 24(610)      | 4'-0" (1.22m) | 24(610)       | 24(610)       | 1 : 2            |
| 7x5 (2100x1500)        | 8(200)       | 8'-4" (2.54m)  | 6'-4" (1.93m)  | 8(200)       | 24(610)      | 4'-0" (1.22m) | 36(915)       | 24(610)       | 1 : 2            |
| 7x6 (2100x1800)        | 8(200)       | 8'-4" (2.54m)  | 7'-4" (2.24m)  | 8(200)       | 24(610)      | 4'-0" (1.22m) | 4'-0" (1.22m) | 24(610)       | 1 : 2            |
| 7x7 (2100x2100)        | 8(200)       | 8'-4" (2.54m)  | 8'-4" (2.54m)  | 8(200)       | 24(610)      | 4'-0" (1.22m) | 5'-0" (1.52m) | 24(610)       | 1 : 2            |
| 8x4 (2400x1200)        | 8(200)       | 9'-4" (2.84m)  | 5'-4" (1.63m)  | 8(200)       | 24(610)      | 4'-0" (1.22m) | 24(610)       | 24(610)       | 1 : 2            |
| 8x5 (2400x1500)        | 8(200)       | 9'-4" (2.84m)  | 6'-4" (1.93m)  | 8(200)       | 24(610)      | 4'-0" (1.22m) | 36(915)       | 24(610)       | 1 : 2            |
| 8x6 (2400x1800)        | 8(200)       | 9'-4" (2.84m)  | 7'-4" (2.24m)  | 8(200)       | 24(610)      | 4'-0" (1.22m) | 4'-0" (1.22m) | 24(610)       | 1 : 2            |
| 9x5 (2700x1500)        | 9(225)       | 10'-6" (3.2m)  | 6'-6" (1.98m)  | 9(225)       | 24(610)      | 4'-0" (1.22m) | 36(915)       | 24(610)       | 1 : 2            |
| 9x6 (2700x1800)        | 9(225)       | 10'-6" (3.2m)  | 7'-6" (2.29m)  | 9(225)       | 24(610)      | 4'-0" (1.22m) | 4'-0" (1.22m) | 24(610)       | 1 : 2            |

All dimensions are in inches (millimeters) unless otherwise noted.

ILLINOIS DEPARTMENT OF TRANSPORTATION  
**DISTRICT CADD STANDARD**

PRECAST CONCRETE BOX CULVERTS (SPECIAL), END SECTION (SPECIAL), & DROP BOX END SECTIONS (SPECIAL)

CADD STANDARD 540401-D4(2)  
 SCALE: NOT TO SCALE

DRAWN BY CADD  
 CHECKED BY  
 SHEET 2 OF 2