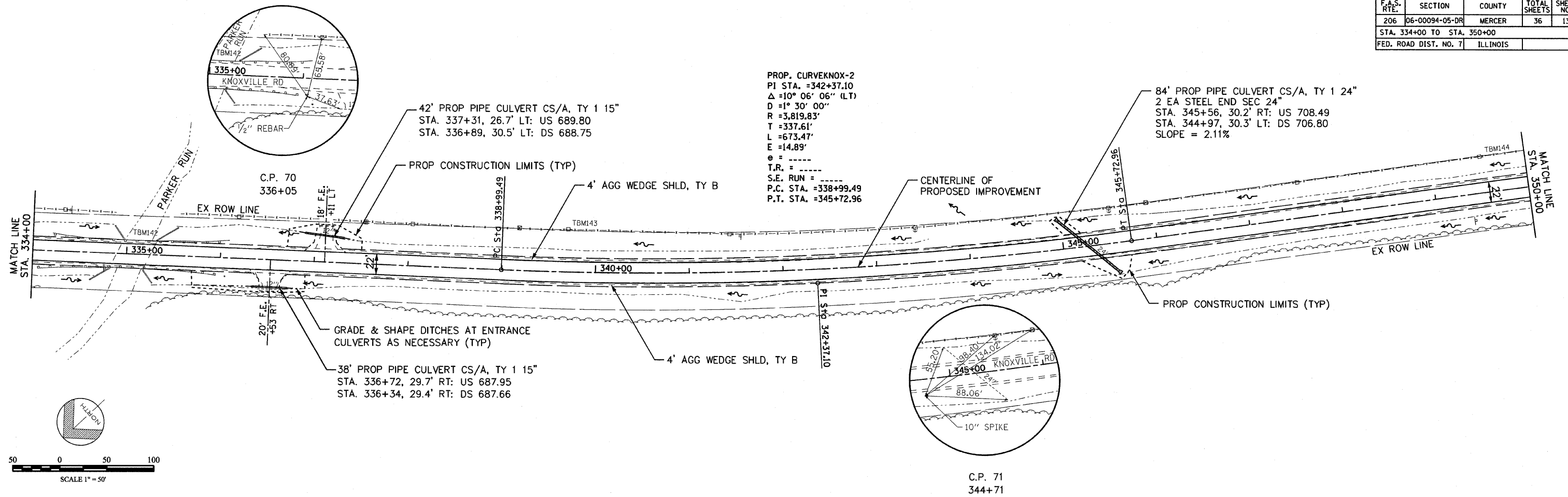


F.A.S. RTE.	SECTION	COUNTY	TOTAL SHEETS	SHEET NO.
206	06-00094-05-DR	MERCER	36	13
STA. 334+00 TO STA. 350+00		FED. ROAD DIST. NO. 7 ILLINOIS		



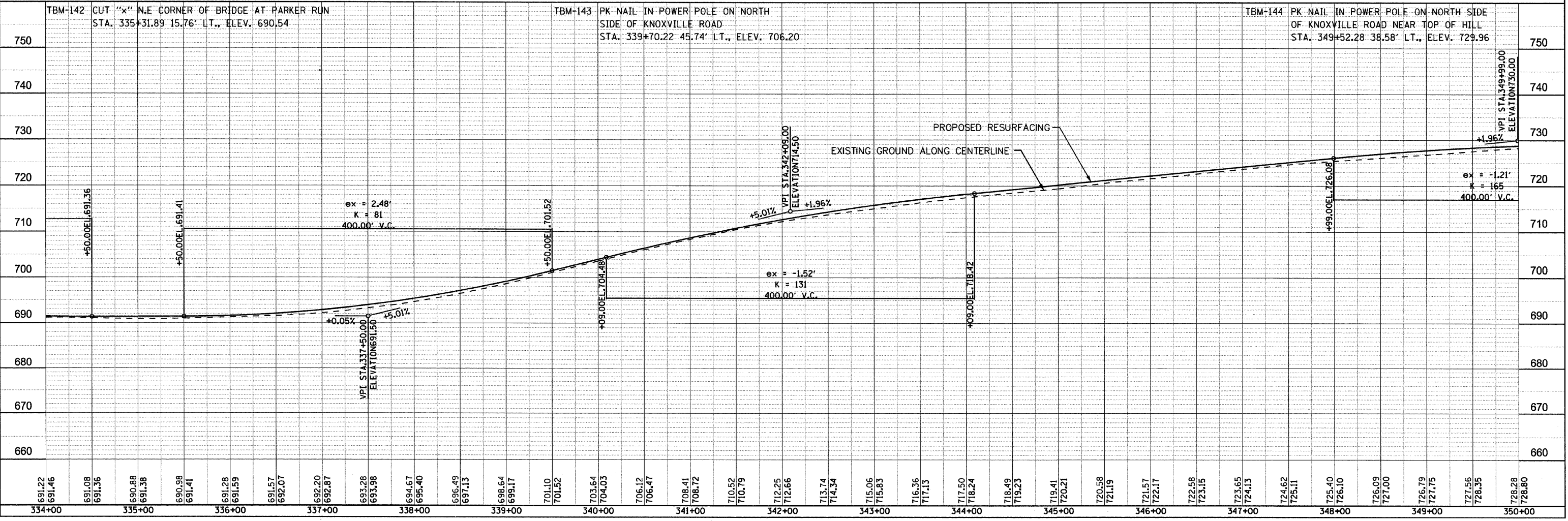
PROP. CURVEKNOX-2
 PI STA. =342+37.10
 $\Delta = 10^{\circ} 06' 06''$ (LT)
 $D = 1^{\circ} 30' 00''$
 $R = 3,819.83'$
 $T = 337.61'$
 $L = 673.47'$
 $E = 14.89'$
 $e =$
 $T.R. =$
 $S.E. RUN =$
 $P.C. STA. = 338+99.49$
 $P.T. STA. = 345+72.96$

84' PROP PIPE CULVERT CS/A, TY 1 24"
 2 EA STEEL END SEC 24"
 STA. 345+56, 30.2' RT: US 708.49
 STA. 344+97, 30.3' LT: DS 706.80
 SLOPE = 2.11%

42' PROP PIPE CULVERT CS/A, TY 1 15"
 STA. 337+31, 26.7' LT: US 689.80
 STA. 336+89, 30.5' LT: DS 688.75

38' PROP PIPE CULVERT CS/A, TY 1 15"
 STA. 336+72, 29.7' RT: US 687.95
 STA. 336+34, 29.4' RT: DS 687.66

C.P. 71
 344+71



Station	Elevation	Notes
334+00	691.22	
334+00	691.46	
334+00	691.08	
334+00	691.36	
335+00	690.88	
335+00	691.38	
336+00	690.98	
336+00	691.41	
337+00	691.28	
337+00	691.59	
337+00	691.57	
337+00	692.07	
337+00	692.20	
337+00	692.87	
338+00	693.28	
338+00	693.98	
338+00	694.67	
338+00	695.40	
339+00	696.49	
339+00	697.13	
339+00	698.64	
339+00	699.17	
340+00	701.10	
340+00	701.52	
340+00	703.64	
340+00	704.03	
341+00	706.12	
341+00	706.47	
341+00	708.41	
341+00	708.72	
342+00	710.52	
342+00	710.79	
342+00	712.25	
342+00	712.66	
343+00	713.74	
343+00	714.34	
343+00	715.06	
343+00	715.83	
344+00	716.36	
344+00	717.13	
344+00	717.50	
344+00	718.24	
345+00	718.49	
345+00	719.23	
345+00	719.41	
345+00	720.21	
346+00	720.58	
346+00	721.19	
346+00	721.57	
346+00	722.17	
347+00	722.58	
347+00	723.15	
347+00	723.65	
347+00	724.13	
348+00	724.62	
348+00	725.11	
348+00	725.40	
348+00	726.10	
349+00	726.09	
349+00	727.00	
349+00	726.79	
349+00	727.75	
350+00	727.56	
350+00	728.35	
350+00	728.28	
350+00	728.80	