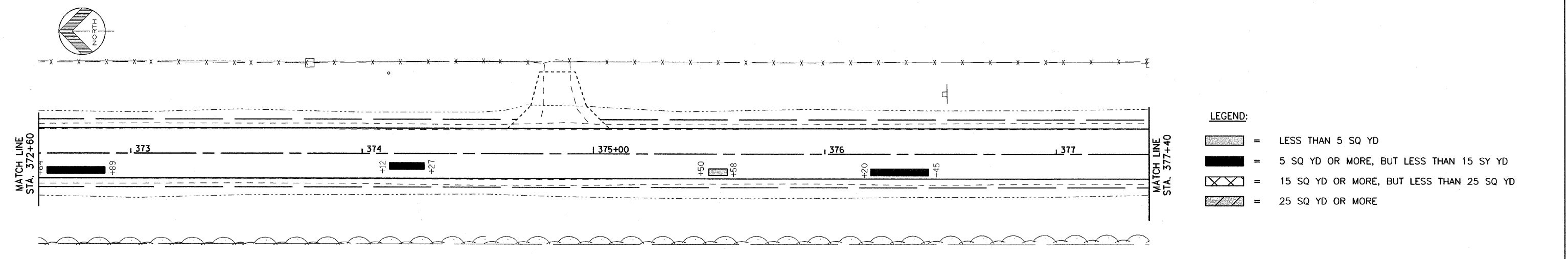
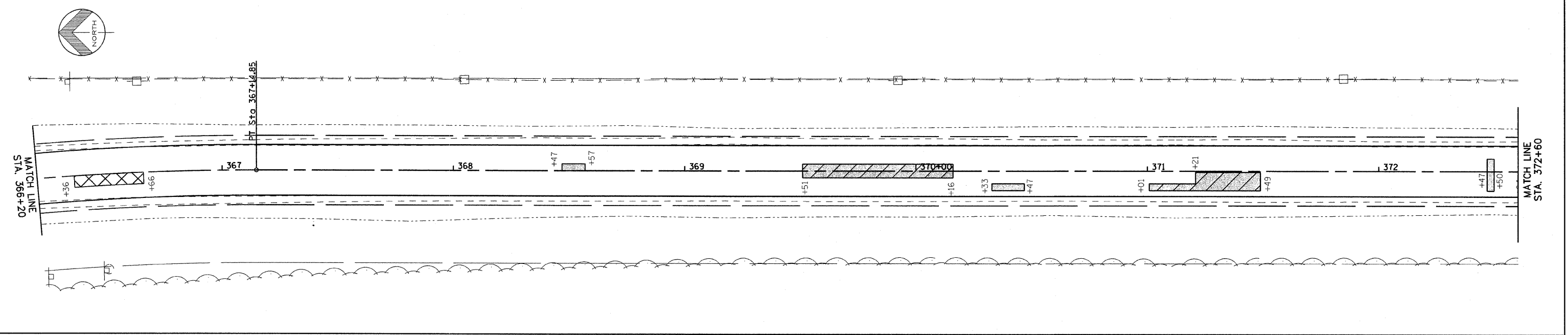
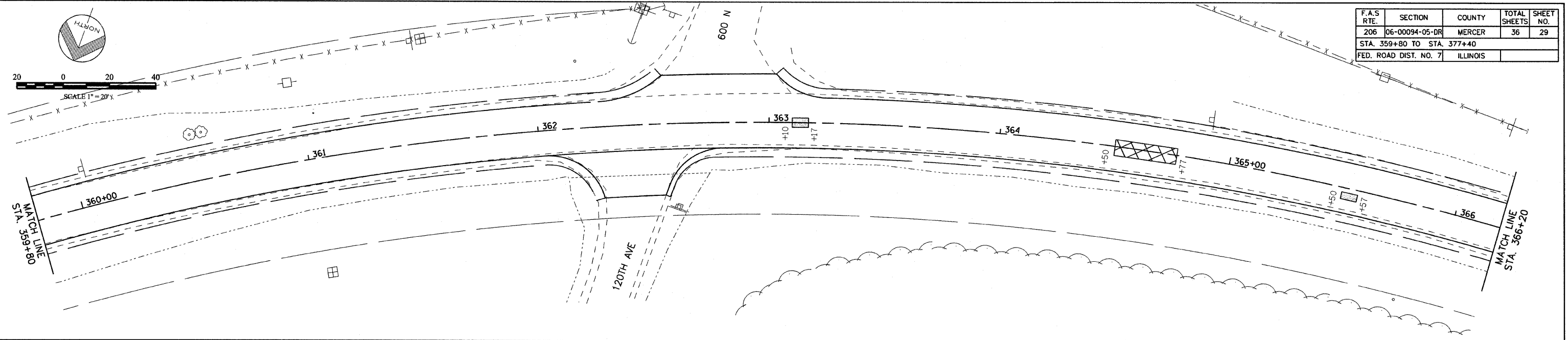


F.A.S. RTE.	SECTION	COUNTY	TOTAL SHEETS	SHEET NO.
206	06-00094-05-DR	MERCER	36	29
STA. 359+80 TO STA. 377+40				
FED. ROAD DIST. NO. 7		ILLINOIS		



LEGEND:

	=	LESS THAN 5 SQ YD
	=	5 SQ YD OR MORE, BUT LESS THAN 15 SY YD
	=	15 SQ YD OR MORE, BUT LESS THAN 25 SQ YD
	=	25 SQ YD OR MORE

PATCHING PLAN
 SECTION 06-00094-05-DR
 F.A.S. RTE. 206, STA. 257+10.06 TO 428+35.00
 RICHLAND GROVE TOWNSHIP
 MERCER COUNTY