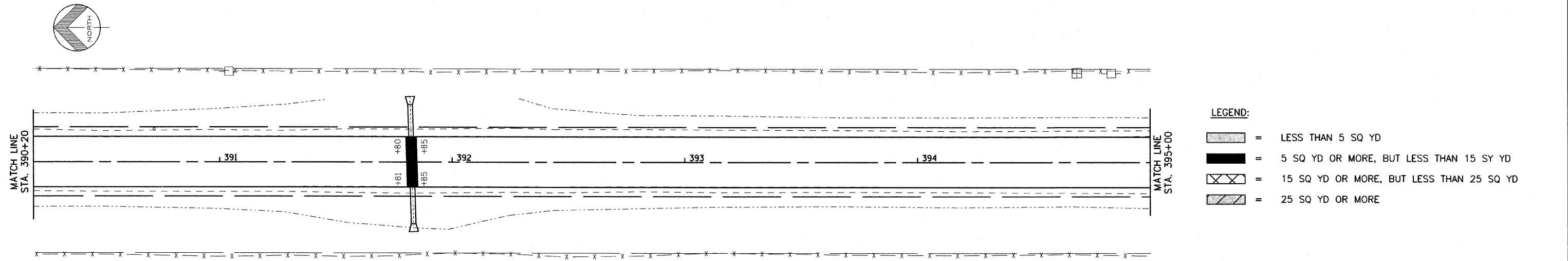
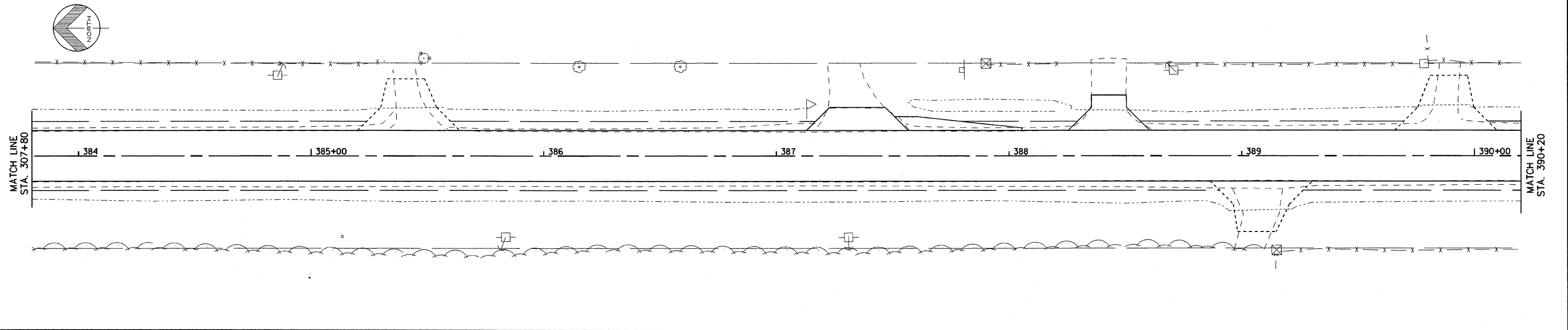
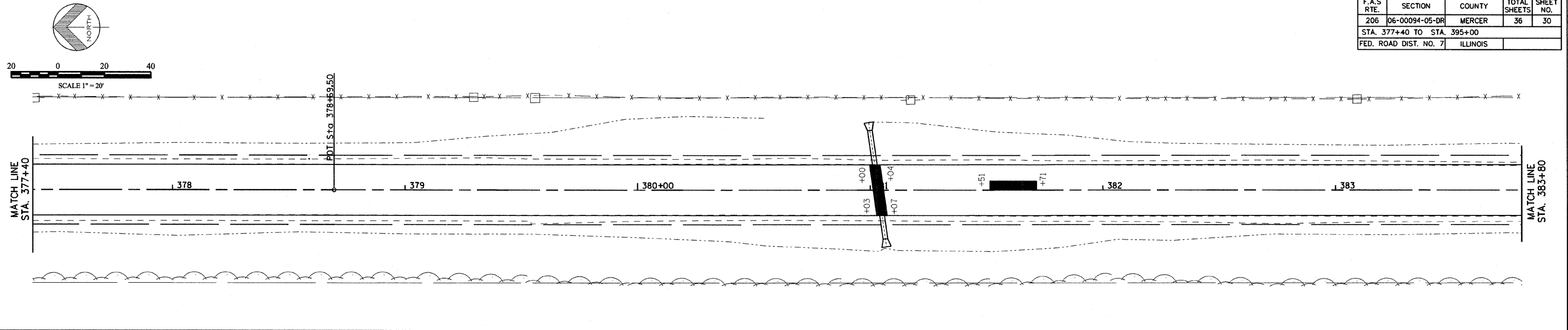


F.A.S. RTE.	SECTION	COUNTY	TOTAL SHEETS	SHEET NO.
206	06-00094-05-DR	MERCER	36	30
STA. 377+40 TO STA. 395+00				
FED. ROAD DIST. NO. 7 ILLINOIS				



**LEGEND:**

	= LESS THAN 5 SQ YD
	= 5 SQ YD OR MORE, BUT LESS THAN 15 SY YD
	= 15 SQ YD OR MORE, BUT LESS THAN 25 SQ YD
	= 25 SQ YD OR MORE

**PATCHING PLAN**  
 SECTION 06-00094-05-DR  
 F.A.S. RTE. 206, STA. 257+10.06 TO 428+35.00  
 RICHLAND GROVE TOWNSHIP  
 MERCER COUNTY