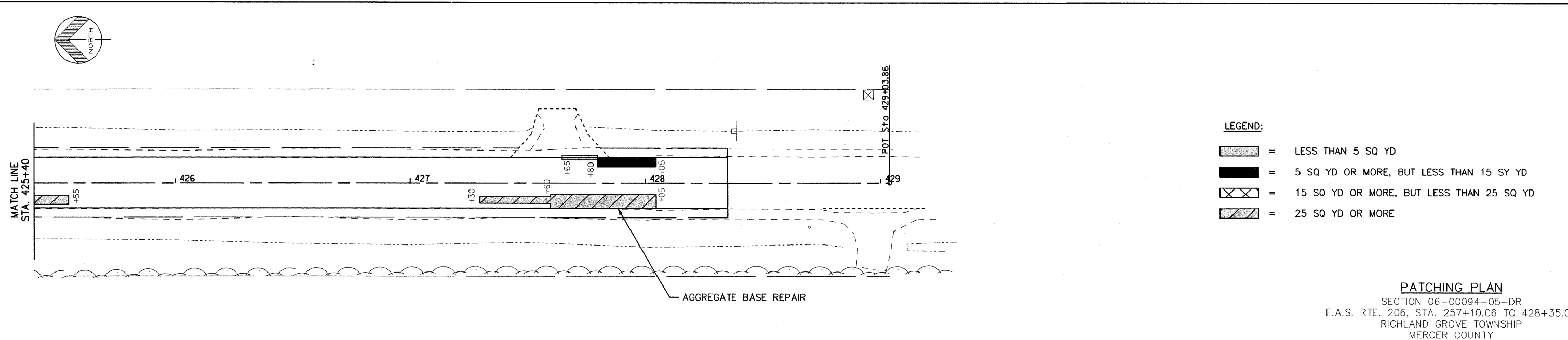
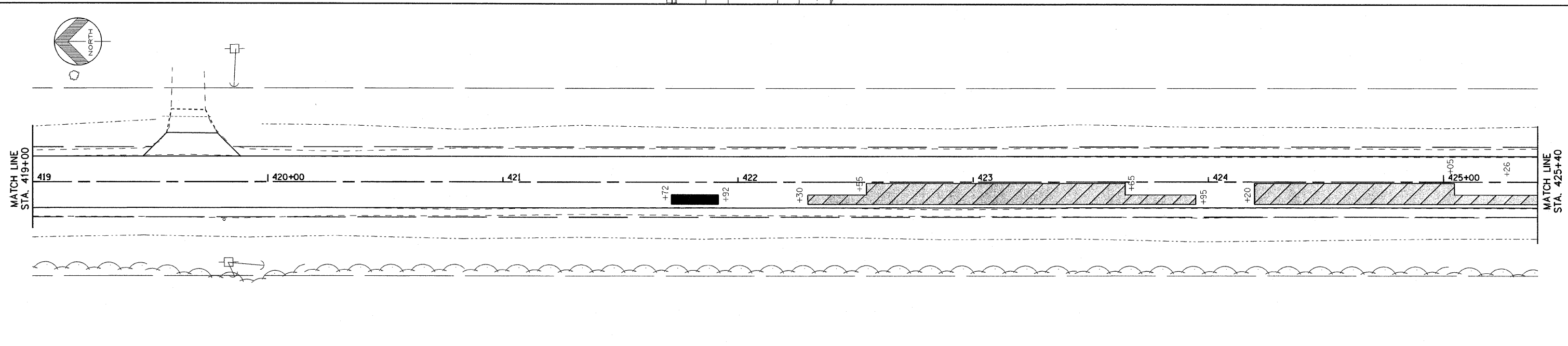
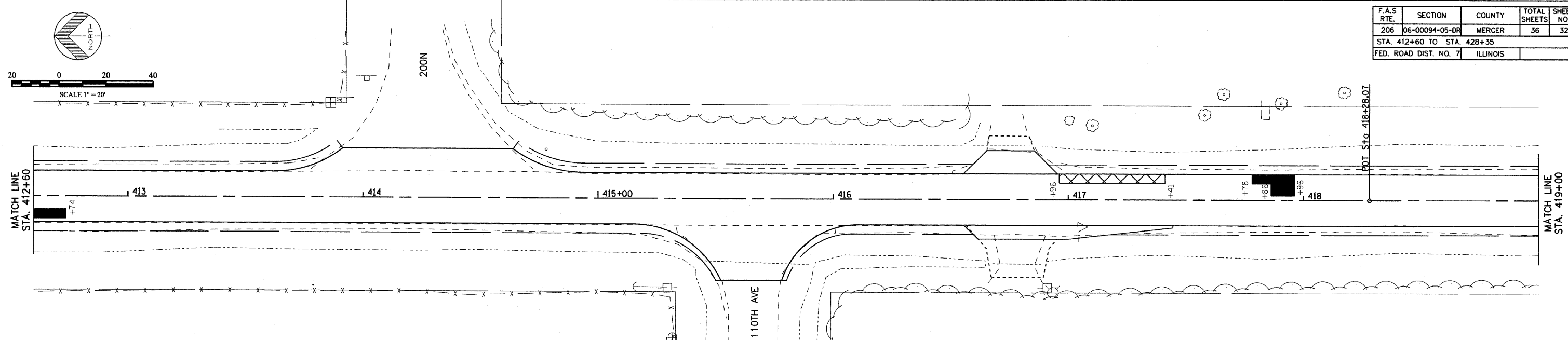


F.A.S. RTE.	SECTION	COUNTY	TOTAL SHEETS	SHEET NO.
206	06-00094-05-DR	MERCER	36	32
STA. 412+60 TO STA. 428+35				
FED. ROAD DIST. NO. 7 ILLINOIS				



LEGEND:

	= LESS THAN 5 SQ YD
	= 5 SQ YD OR MORE, BUT LESS THAN 15 SY YD
	= 15 SQ YD OR MORE, BUT LESS THAN 25 SQ YD
	= 25 SQ YD OR MORE

PATCHING PLAN
 SECTION 06-00094-05-DR
 F.A.S. RTE. 206, STA. 257+10.06 TO 428+35.00
 RICHLAND GROVE TOWNSHIP
 MERCER COUNTY