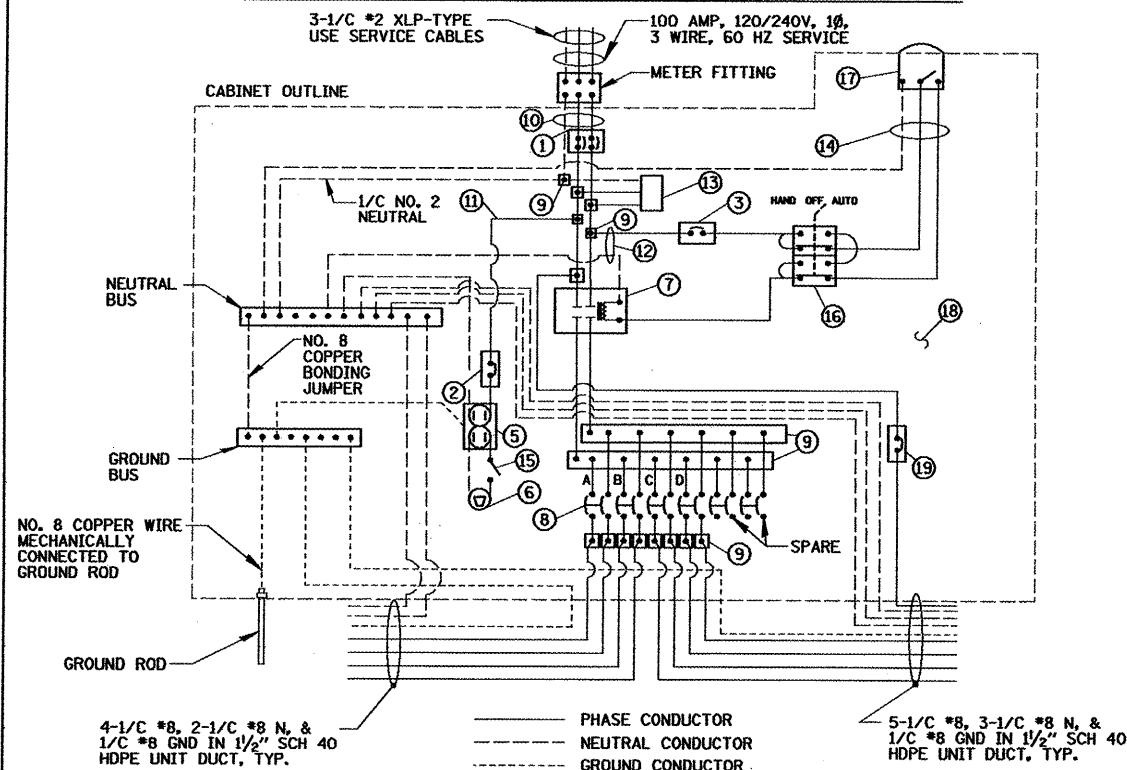


ITEM	SPECIFICATION	MFG./MODEL NO. OR APPROVED EQUAL
1 MAIN CIRCUIT BREAKER	100 AMPERE, 2P, 240V SERVICE RATING, 22KAIC	SIEMENS NO. ED42B100
2 LAMPHOLDER CIRCUIT BREAKER	20 AMPERE, 1P, 120V RATING, 22KAIC	SIEMENS NO. ED41B020
3 PHOTOELECTRIC CONTROL CIRCUIT BREAKER	15 AMPERE, 1P, 120V RATING, 22KAIC	SIEMENS NO. ED41B015
4 NOT USED		
5 CABINET RECEPTACLE AND BOX	COMMERCIAL GRADE GFCI 20A/120V, MOUNTED IN A WEATHERPROOF CAST ALUMINUM SINGLE GANG BOX WITH WEATHERPROOF COVER	RECEPTACLE: LEVITON NO. 8899, BOX: APPLETON NO. WSM150 COVER: APPLETON NO. WHG1
6 CABINET LIGHT AND BOX	120V WEATHERPROOF LAMPHOLDER MOUNTED IN A CAST ALUMINUM BOX & EXT. GRADE 100W LAMP	LIGHT & BOX: RAB NO. VX100DG
7 CONTACTOR	100 AMPERE, 2 POLE, 120 V COIL, ELEC HELD	SQUARE D NO. 8903 SOG 1 V02
8 BRANCH LINE CIRCUIT BREAKERS	6 - 30 AMPERE, 2P, 240V RATING, 22KAIC	SIEMENS NO. ED42B030
9 POWER DISTRIBUTION BLOCK	600 VOLT, INSULATED, SIZE AS REQUIRED	MARATHON
10 SERVICE CABLES	3-600V (XLP-TYPE USE) NO. 2	N/A
11 LAMPHOLDER WIRE	2-600V XLP NO. 12	N/A
12 CONTROL WIRE	2-600V XLP NO. 12	N/A
13 SURGE ARRESTOR	10 K AMPERE RATING	SQUARE D NO. SDSA 1175
14 PHOTOELECTRIC CONTROL WIRE	3-600V XLP NO. 12	N/A
15 LIGHT SWITCH	20A/120V, SPST TYPE SWITCH IN 4" BOX W/ COVER	HUBBELL NO. CSB120
16 HAND-AUTO-OFF CONTROL SWITCH	20A, 3 POS. MTD IN CAST ALUM. ENCLOSURE	SQUARE D NO. 9001 KYK 111
17 PHOTOCCELL	120V, MTD. ON CABINET, DELAY TYPE, SPST-NC	FISHER PIERCE NO. PFPA-105M
18 BACK PANEL	1/2" THICK SOLID PHENOLIC LAMINATE	ARBORON
19 FUTURE CLOCK CIRCUIT BREAKER	30 AMPERE, 1P, 120V RATING, 22KAIC	SIEMENS NO. ED41B030

NOTES:

- ALL ITEMS LISTED IN LIGHTING CONTROLLER COMPONENT SCHEDULE SHALL BE CONSIDERED INCIDENTAL TO THE PRICE BID FOR "LIGHTING CONTROLLER" INCLUDING CABINET AND FOUNDATION.
- THE LIGHTING CONTROLLER TOGETHER WITH ALL OF ITS COMPONENTS SHALL BE UL LISTED AS AN "ENCLOSED INDUSTRIAL CONTROL PANEL" UNDER UL508A.
- CONNECTION OF SURGE ARRESTOR TO LOAD SIDE OF MAIN CIRCUIT BREAKER SHALL NOT BE "DOUBLE LUGGED."

LIGHTING CONTROLLER COMPONENT SCHEDULE



LIGHTING CONTROLLER WIRING DETAIL

N.T.S.

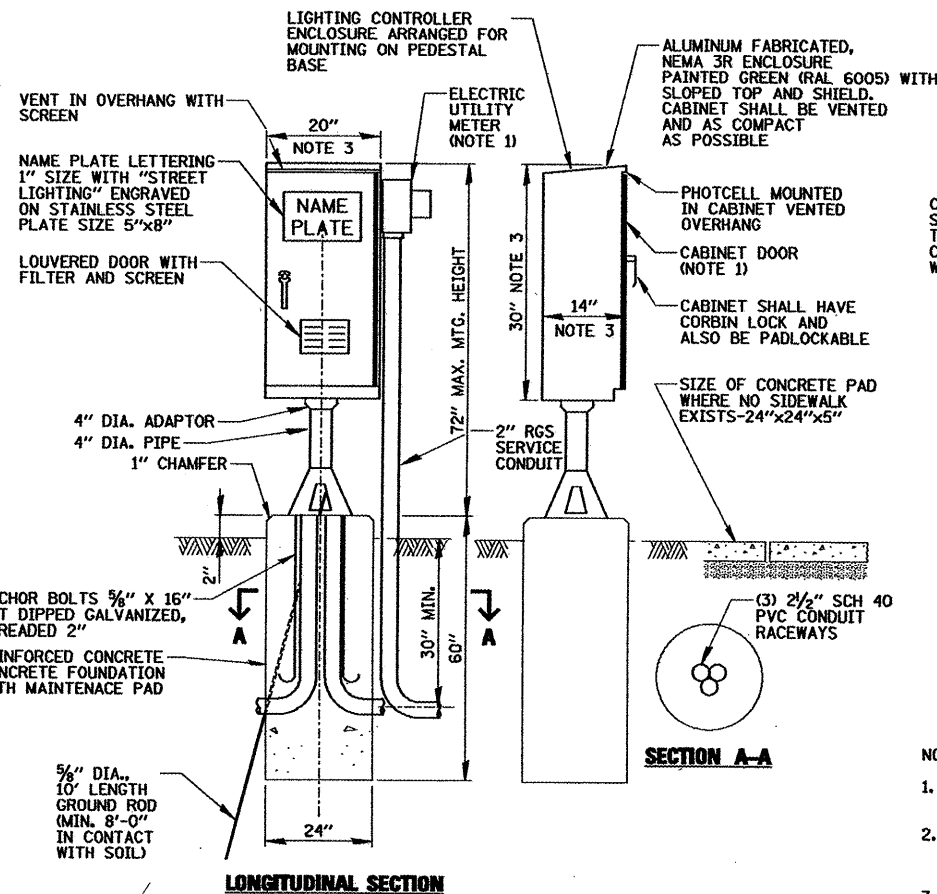
CIRCUIT ID	100W ORNAMENTAL LUMINAIRE		150W ROADWAY LUMINAIRE		RECEPTACLES OR LOAD		TOTAL CIRCUIT LOAD	
	QTY.	LOAD/FIXT. (WATTS)	QTY.	LOAD/FIXT. (WATTS)	QTY.	LOAD/FIXT. (WATTS)	(WATTS)	AMPS (VOLTS)
A	7	136	1	195	8	180	2587 W	10.8A (240V)
B	6	136	2	195	8	180	2646 W	11.0A (240V)
C	7	136	2	195	9	180	2962 W	12.3A (240V)
D	8	136	1	195	9	180	2903 W	12.1A (240V)
E	N/A	N/A	N/A	N/A	1	1440	1440 W	12A (120V)
TOTAL	28	N/A	6	N/A	35	N/A	12,538 W	52.2A (240V)

LIGHTING CONTROLLER CIRCUIT LOADS

F.A.P. RTE.	SECTION	COUNTY	TOTAL SHEETS	SHEET NO.
643	09-00001-00-LT	STARK	7	4

CONTRACT NO. 89564
FED. ROAD DIST. NO. 4 [ILLINOIS] FED. AID PROJECT

NOTE:
ALL CONDUCTORS IN THE UNIT DUCT RUNS SHALL HAVE INDIVIDUALLY COLOR CODED INSULATION THROUGHOUT THE ENTIRE LENGTH OF THE CONDUCTOR. THE COLOR IDENTIFICATION FOR THE SYSTEM GROUND SHALL BE GREEN. THE IDENTIFICATION FOR THE NEUTRAL SHALL BE WHITE. THE FOUR (4) PHASE CONDUCTORS SHALL BE IN ACCORDANCE WITH LOCAL AND THE I.D.O.T. STANDARD SPECIFICATIONS FOR WIRING MULTI-CONDUCTOR CIRCUITS IN SINGLE UNIT DUCT RUNS.



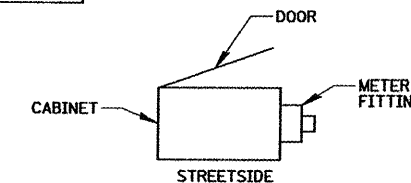
LONGITUDINAL SECTION

NOTES:

- SEE DETAIL THIS SHEET FOR CABINET METER FITTING & DOOR ORIENTATION.
- ALL ITEMS SHOWN ABOVE (INCLUDING FOUNDATION) SHALL BE INCLUDED IN THE PRICE BID FOR "LIGHTING CONTROLLER", EXCEPT FOR THE SERVICE CONDUIT/WIRE WHICH WILL BE PAID FOR UNDER "ELECTRIC SERVICE INSTALLATION".
- CABINET DIMENSIONS SHOWN ARE APPROXIMATE, CABINET SHALL BE AS COMPACT AS POSSIBLE, CONTRACTOR TO COORDINATE.

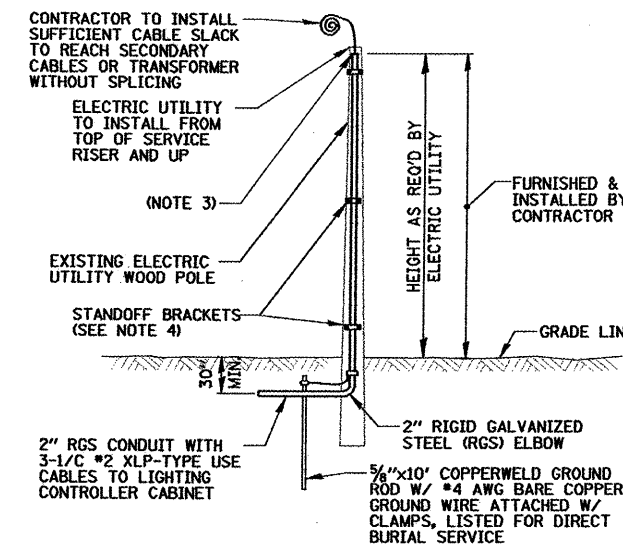
PROPOSED LIGHTING CONTROLLER CABINET AND FOUNDATION

N.T.S.



CABINET METER FITTING & DOOR ORIENTATION

N.T.S.



NOTES:

- ALL WORK SHALL CONFORM TO THE REQUIREMENTS OF THE LOCAL ELECTRIC UTILITY COMPANY.
- FURNISHING AND INSTALLING ALL MATERIAL SHOWN ABOVE (EXCEPT FOR POLE) SHALL BE INCLUDED IN THE PRICE BID FOR "ELECTRIC SERVICE INSTALLATION".
- CONTRACTOR TO PROVIDE AN APPROVED WEATHERHEAD OR A CONDUIT BUSHING AND RACEWAY SEAL AT TOP OF RISER.
- AMEREN-CILCO TO INSTALL SERVICE RISER STANDOFF BRACKETS & PROVIDE STRAPS TO CONTRACTOR TO INSTALL. COORDINATE ALL WORK WITH SUSAN SULMONETTI FROM AMEREN-CILCO AT (309) 256-6550.

ELECTRIC UTILITY OVERHEAD CONNECTION POLE

N.T.S.

FILE NAME =	USER NAME = GHEN	DESIGNED GAH	REVISED -
Na\yongung\990519\Mech\LDI_090519_04.GIT		DRAWN KB	REVISED -
		CHECKED AJD	REVISED -
		DATE 11-06-2009	REVISED -

STATE OF ILLINOIS
DEPARTMENT OF TRANSPORTATION

DOWNTOWN LIGHTING PROJECT
LIGHTING DETAILS (1 OF 3)

SCALE: N.T.S. SHEET NO. 4 OF 7 SHEETS STA. TO STA.

CHRISTOPHER B. BURKE ENGINEERING, LTD.
202 NE Madison, Suite 301
Peoria, Illinois 61602
(309) 676-0000