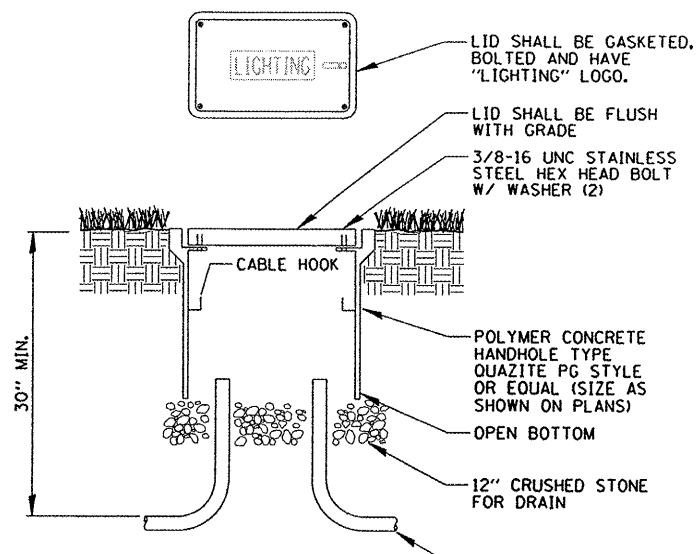


F.A.P. RTE.	SECTION	COUNTY	TOTAL SHEETS	SHEET NO.
643	09-00001-00-LT	STARK	7	6
FED. ROAD DIST. NO. 4 ILLINOIS		FED. AID PROJECT		
		CONTRACT NO. 89564		

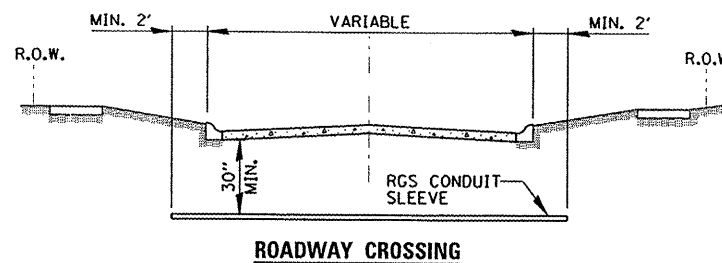


NOTES:

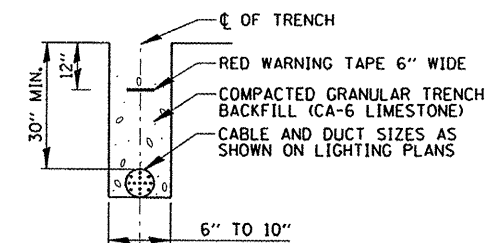
1. NO SPLICES SHALL BE MADE IN HANDHOLE.
2. POLYMER CONCRETE HANDHOLE AND LID SHALL BE GREEN IN LANDSCAPED AREAS AND MATCH COLOR IN CONCRETE/BRICK AREAS.
3. BOX & LID SHALL MEET/EXCEED ANSI TIER 15 LOADING REQUIREMENTS AND BE UL LISTED.

POLYMER CONCRETE HANDHOLE

N.T.S.



ROADWAY CROSSING



TRENCH CROSS SECTION

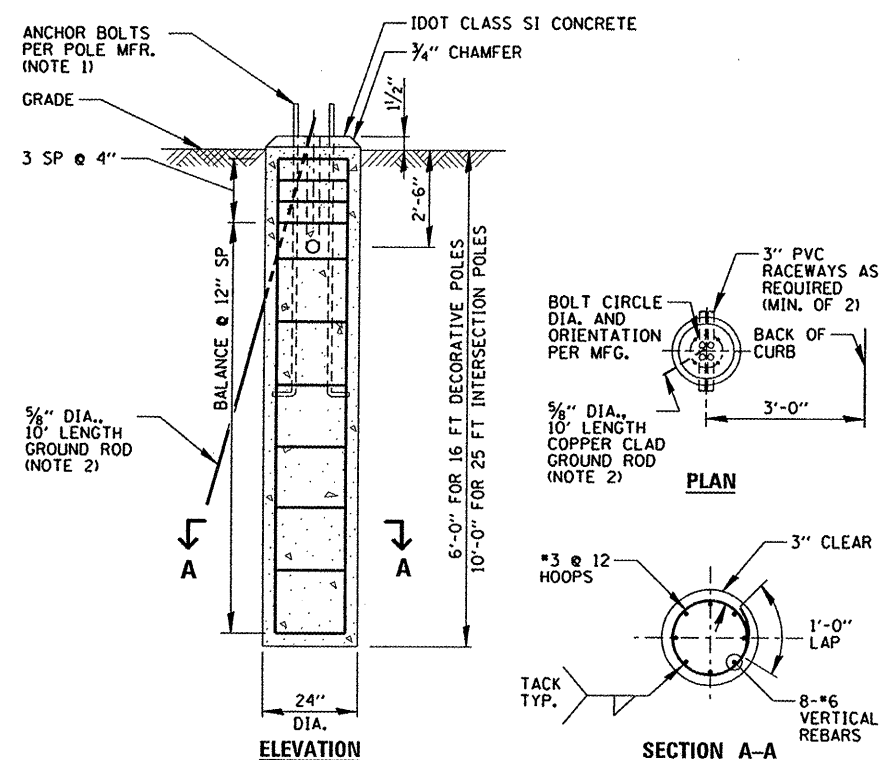
- ① SLEEVE SHALL BE HEAVY WALL RIGID GALVANIZED STEEL (RGS) CONDUIT.
- ② SLEEVE SHALL EXTEND A MINIMUM OF 2 FT. BEYOND BACK OF CURB.
- ③ SLEEVE SHALL BE A MINIMUM OF 30" BELOW ROADWAY OR CURB BOTTOM.

ELECTRIC CONDUIT INSTALLATION

N.T.S.

CONDUIT SCHEDULE

- ① PROPOSED 1 1/2" UNIT DUCT WITH 5-1/C #8, 3-1/C #8 NEUTRAL, & 1/C #8 GROUND, BORED & PULLED
- ② PROPOSED 1 1/2" UNIT DUCT WITH 4-1/C #8, 2-1/C #8 NEUTRAL, & 1/C #8 GROUND, BORED & PULLED
- ③ PROPOSED 1" UNIT DUCT, BORED AND PULLED, WITH PULL ROPE. CONTRACTOR SHALL CAP & LOCATE CONDUIT FOR FUTURE CLOCK TOWER

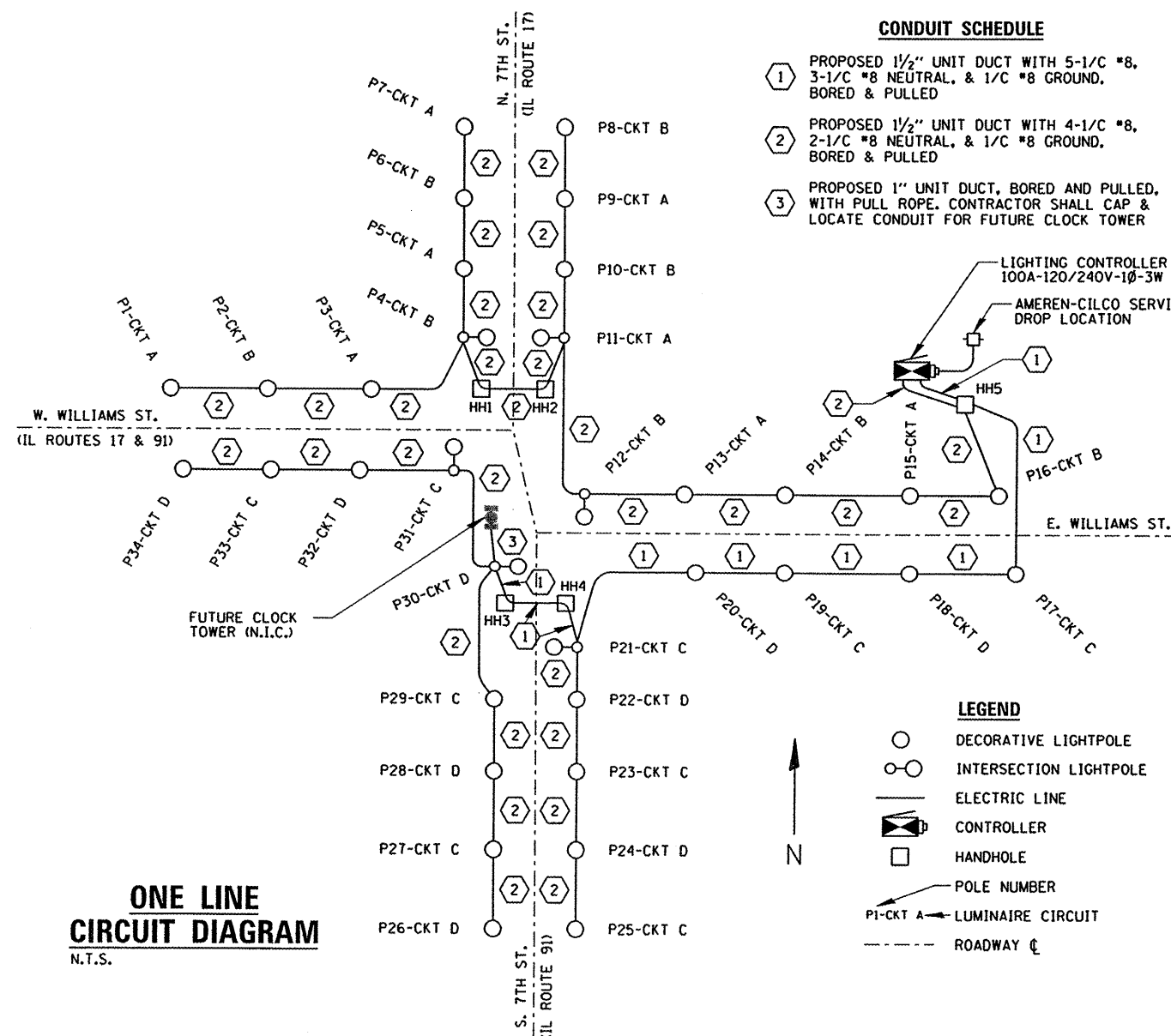


NOTES:

1. FOUNDATIONS SHALL NOT PROTRUDE MORE THAN 4" ABOVE FINISHED GRADE, INCLUDING ANCHOR RODS.
2. GROUND ROD SHALL BE CAST INTO CONCRETE FOUNDATION WITH 8 FEET IN CONTACT WITH SOIL.
3. FOUNDATIONS SHALL BE VIBRATED IN ACCORDANCE WITH IDOT STANDARD PRACTICES.
4. ALL ABOVE ITEMS INCLUDING CONCRETE, REINFORCEMENT, RACEWAYS AND FORMWORK SHALL BE INCLUDED IN THE "LIGHT POLE FOUNDATION" PAY ITEM.

CONCRETE FOUNDATION DETAIL

N.T.S.



ONE LINE CIRCUIT DIAGRAM

N.T.S.

LEGEND

- DECORATIVE LIGHTPOLE
- INTERSECTION LIGHTPOLE
- ELECTRIC LINE
- CONTROLLER
- HANDHOLE
- POLE NUMBER
- P1-CKT A → LUMINAIRE CIRCUIT
- ROADWAY C

FILE NAME =	USER NAME = #USER#	DESIGNED GAH	REVISED -
#FILE#		DRAWN KB	REVISED -
		CHECKED AJD	REVISED -
		DATE 11-06-2009	REVISED -

STATE OF ILLINOIS
DEPARTMENT OF TRANSPORTATION

DOWNTOWN LIGHTING PROJECT
LIGHTING DETAILS (3 OF 3)

CHRISTOPHER B. BURKE ENGINEERING, LTD.
202 NE Madison, Suite 301
Peoria, Illinois 61602
(309) 676-9000