

ROUTE NO.	SECTION	COUNTY	TOTAL SHEETS	SHEET NO.
C.H. 3	06-00086-00-PV	MACOUPIN	43	1
FED. ROAD DIST. NO. 7		ILLINOIS	FED. AID PROJECT-	

STATE OF ILLINOIS  
DEPARTMENT OF TRANSPORTATION  
DIVISION OF HIGHWAYS

PLANS FOR PROPOSED  
SURFACE TRANSPORTATION PROGRAM - RURAL

INDEX OF SHEETS

- 1. COVER SHEET
- 2. SUMMARY OF QUANTITIES, SCHEDULES & NOTES
- 3. TYPICAL SECTIONS
- 4-14. PLAN & PROFILES
- 15. LITCHFIELD ROAD/ROUTE 4 INTERSECTION DETAILS
- 16. CULVERT DETAILS
- 17-43. STATION CROSS SECTIONS

SCALES

PLAN	0'	50'
PROFILE HORIZ.	0'	50'
PROFILE VERT.	0'	5'
CROSS SECTIONS-HORIZ.	0'	10'
CROSS SECTIONS-VERT.	0'	5'

SECTION 06-00086-00-PV  
F.A.S. ROUTE 2729/C.H.3  
MACOUPIN COUNTY  
PROJECT ARA-RS-2729(105)  
C-96-244-09

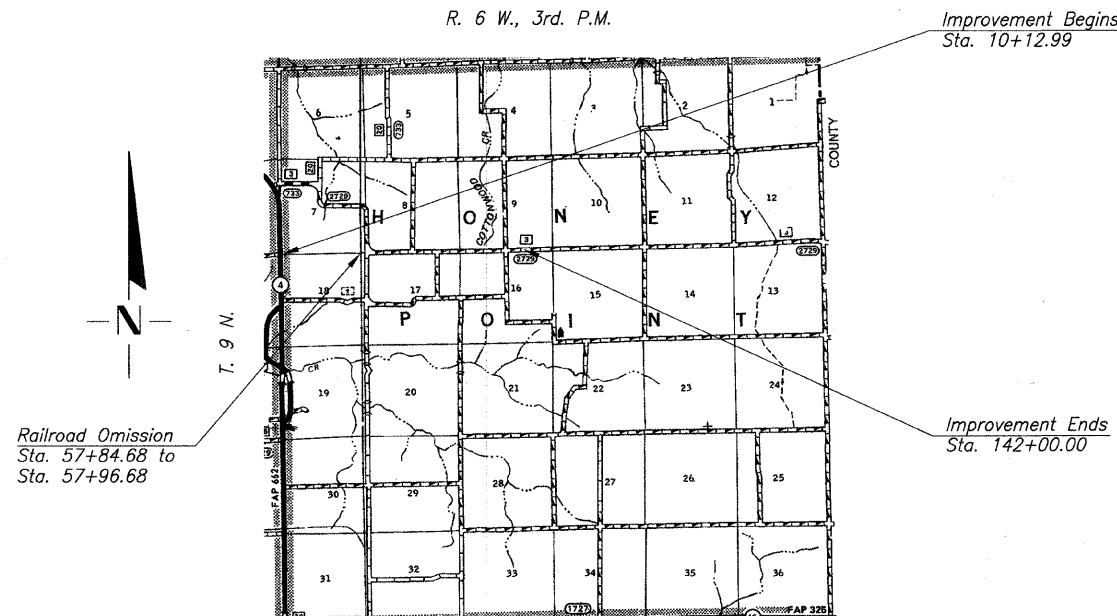
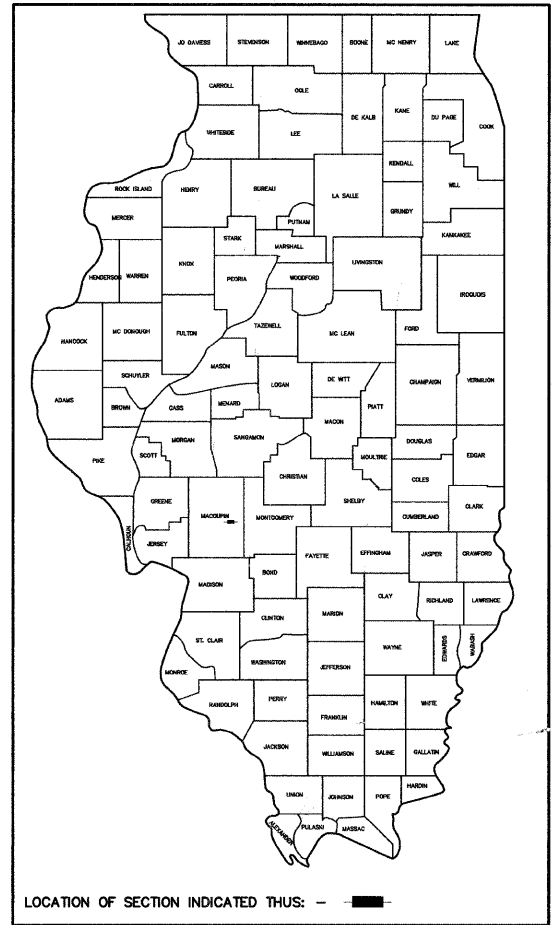
STANDARDS

- 280001-05 TEMPORARY EROSION CONTROL SYSTEMS
- 542301-02 PRECAST REINFORCED CONCRETE FLARED END SECTION
- 542306-02 PRECAST REINFORCED CONCRETE ELLIPTICAL FLARED END SECTION
- 601001-03 SUB-SURFACE DRAINS
- 601101-01 CONCRETE HEADWALL FOR PIPE DRAIN
- 666001-01 RIGHT OF WAY MARKERS
- 701201-03 LANE CLOSURE, 2L, 2W, DAY ONLY, FOR SPEEDS ≥ 45 MPH
- 701326-03 LANE CLOSURE, 2L, 2W, PAVEMENT WIDENING, FOR SPEEDS ≥ 45 MPH
- 701901-01 TRAFFIC CONTROL DEVICES
- 780001-02 TYPICAL PAVEMENT MARKINGS
- 000001-05 STANDARD SYMBOLS, ABBREVIATIONS & PATTERNS
- BLR 21-8 TYPICAL APPLICATION OF TRAFFIC CONTROL DEVICES FOR CONSTRUCTION ON RURAL LOCAL HIGHWAYS

UTILITIES

MJM ELECTRIC COOPERATIVE  
P.O. BOX 80  
CARLINVILLE, ILLINOIS 62626

FRONTIER COMMUNICATIONS  
225 NORTH BROAD STREET  
CARLINVILLE, ILLINOIS 62626



LAYOUT

APPROXIMATE SCALE = 0 1 MILE

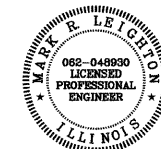
Net Length of Section = 13187.01 Feet - 12.00 = 13175.01 = 2.495 Miles

DESIGN FUNCTIONAL CLASSIFICATION:  
MAJOR COLLECTOR 750-2000 ADT  
DESIGN TRAFFIC: 900  
DESIGN SPEED: 50 M.P.H.

CONTRACT NO. 93501

COOMBE-BLOXDORF P.C.  
Consulting Engineers • Land Surveyors • Planners  
706 South Grand Avenue West, Springfield, Illinois 62706 217/244-0477  
Design Firm License No. 184-002703

Mark R. Deffen  
ILLINOIS PROFESSIONAL NO. 48930 Expires 11-30-09



APPROVED September 16 2009  
Thomas A Reinhart  
COUNTY ENGINEER

PASSED October 14 2009  
Terence J. Fountain KEC  
DISTRICT SIX ENGINEER OF LOCAL ROADS & STREETS

PASSED October 14 2009  
Ron Duchambeau  
DISTRICT SIX ENGINEER OF CONSTRUCTION

Releasing For Bid Based on Limited Review October 14 2009  
Roger J. Driskell KEC  
DEPUTY DIRECTOR OF HIGHWAYS  
REGIONAL FOUR ENGINEER  
STATE OF ILLINOIS  
DEPARTMENT OF TRANSPORTATION

TOLL FREE JOINT UTILITY LOCATING  
INFORMATION FOR EXCAVATORS (J.U.L.I.E.)  
TELEPHONE NUMBER 1-800-892-0123