

ROUTE NO.	SECTION	COUNTY	TOTAL SHEETS	SHEET NO.
C.H. 3	06-00086-00-PV	MACOUPIN	43	2
FED. ROAD DIST. NO. 7		ILLINOIS	FED. AID PROJECT-	

SUMMARY OF QUANTITIES CONSTRUCTION TYPE CODE 1000			
CODE NO.	ITEM	UNIT	QUANTITY
20200100	EARTH EXCAVATION	CU YD	14,700
20300100	CHANNEL EXCAVATION	CU YD	330
20400800	FURNISHED EXCAVATION	CU YD	13,775
20800150	TRENCH BACKFILL	CU YD	338
25001000	* SEEDING CLASS 2 (SPECIAL)	ACRE	12.6
28000250	TEMPORARY EROSION CONTROL SEEDING	POUND	1,875
28000305	TEMPORARY DITCH CHECKS	FOOT	540
28000400	PERIMETER EROSION BARRIER	FOOT	27,026
28100107	STONE RIPRAP, CLASS A4	SQ YD	185
28200200	FILTER FABRIC	SQ YD	185
35100100	AGGREGATE BASE COURSE, TYPE A	TON	16,493
40200100	AGGREGATE SURFACE COURSE, TYPE A	TON	462
40300100	BITUMINOUS MATERIALS (PRIME COAT)	GALLON	464
40300300	BITUMINOUS MATERIALS (COVER AND SEAL COATS)	GALLON	928
40300500	COVER COAT AGGREGATE	TON	12
40300600	SEAL COAT AGGREGATE	TON	12
40600100	BITUMINOUS MATERIALS (PRIME COAT)	GALLON	17,782
40600895	CONSTRUCTING TEST STRIP	EACH	2
40603080	HOT-MIX ASPHALT BINDER COURSE, IL-19.0, N50	TON	7,391
40603310	HOT-MIX ASPHALT SURFACE COURSE, MIX 'C', N50	TON	3,696
48100100	AGGREGATE SHOULDERS, TYPE A	TON	5,861
48203100	HOT-MIX ASPHALT SHOULDERS	TON	81
50100300	* REMOVAL OF EXISTING STRUCTURES NO. 1	EACH	1
50100400	* REMOVAL OF EXISTING STRUCTURES NO. 2	EACH	1
50800105	REINFORCEMENT BARS	POUND	1,130
54003000	CONCRETE BOX CULVERTS	CU YD	15.6
54020302	PRECAST CONCRETE BOX CULVERTS 3'X2' (M273)	FOOT	48
54020503	PRECAST CONCRETE BOX CULVERTS 5'X3' (M273)	FOOT	80
54020603	PRECAST CONCRETE BOX CULVERTS 6'X3' (M273)	FOOT	80
54020604	PRECAST CONCRETE BOX CULVERTS 6'X4' (M273)	FOOT	108
54020805	PRECAST CONCRETE BOX CULVERTS 8'X5' (M273)	FOOT	54
54200220	PIPE CULVERTS, CLASS D, TYPE 1 15" (CSCP)	FOOT	90
54200223	PIPE CULVERTS, CLASS D, TYPE 1 18" (CSCP)	FOOT	26
54205473	PIPE CULVERTS, CLASS D, TYPE 1 EQUIVALENT ROUND-SIZE 18" (CSCP)	FOOT	30
54200439	PIPE CULVERTS, TYPE 1 RCCP 24"	FOOT	48
54201279	PIPE CULVERTS, TYPE 2 RCCP 24"	FOOT	98
54202119	PIPE CULVERTS, TYPE 3 RCCP 24"	FOOT	136
54206739	PIPE CULVERTS, TYPE 1, REINFORCED CONCRETE, EQUIVALENT ROUND-SIZE 24"	FOOT	45
54213669	PRECAST REINFORCED CONCRETE FLARED END SECTIONS 24"	EACH	6
54214509	PRECAST REINFORCED CONCRETE FLARED END SECTIONS, EQUIVALENT ROUND-SIZE 24"	EACH	2
60100060	CONCRETE HEADWALL FOR PIPE DRAINS	EACH	60
60107600	PIPE UNDERDRAINS 4"	FOOT	25,650
60108100	PIPE UNDERDRAINS 4" (SPECIAL)	FOOT	360
66600105	FURNISHING AND ERECTING RIGHT-OF-WAY MARKERS	EACH	54
67100100	MOBILIZATION	L SUM	1
70101700	* TRAFFIC CONTROL AND PROTECTION	L SUM	1
78001100	PAINT PAVEMENT MARKING-LETTERS AND SYMBOLS	SQ FT	122
78001110	PAINT PAVEMENT MARKING-LINE 4"	FOOT	31,263
78001180	PAINT PAVEMENT MARKING-LINE 24"	FOOT	85
20013798	* CONSTRUCTION LAYOUT	L SUM	1
20048665	* RAILROAD PROTECTIVE LIABILITY INSURANCE	L SUM	1
54001001	* BOX CULVERT END SECTION NO. 1	EACH	2
54001002	* BOX CULVERT END SECTION NO. 2	EACH	2
54001003	* BOX CULVERT END SECTION NO. 3	EACH	2
54001004	* BOX CULVERT END SECTION NO. 4	EACH	2
XX004981	* DEGRADING ROADWAY	SQ YD	6,800
54001005	* BOX CULVERT END SECTION NO. 5	EACH	2
54001006	* BOX CULVERT END SECTION NO. 6	EACH	2

GENERAL NOTES

* SPECIAL PROVISIONS

A. SPECIALTY ITEMS

WHERE SECTION AND SUBSECTION MONUMENTS ARE ENCOUNTERED, THE ENGINEER SHALL BE NOTIFIED BEFORE SUCH MONUMENTS ARE REMOVED. THE CONTRACTOR SHALL PROTECT AND CAREFULLY PRESERVE ALL PROPERTY MARKS AND MONUMENTS UNTIL THE OWNER, AN AUTHORIZED SURVEYOR OR AGENT HAS WITNESSED OR OTHERWISE REFERENCED THEIR LOCATION.

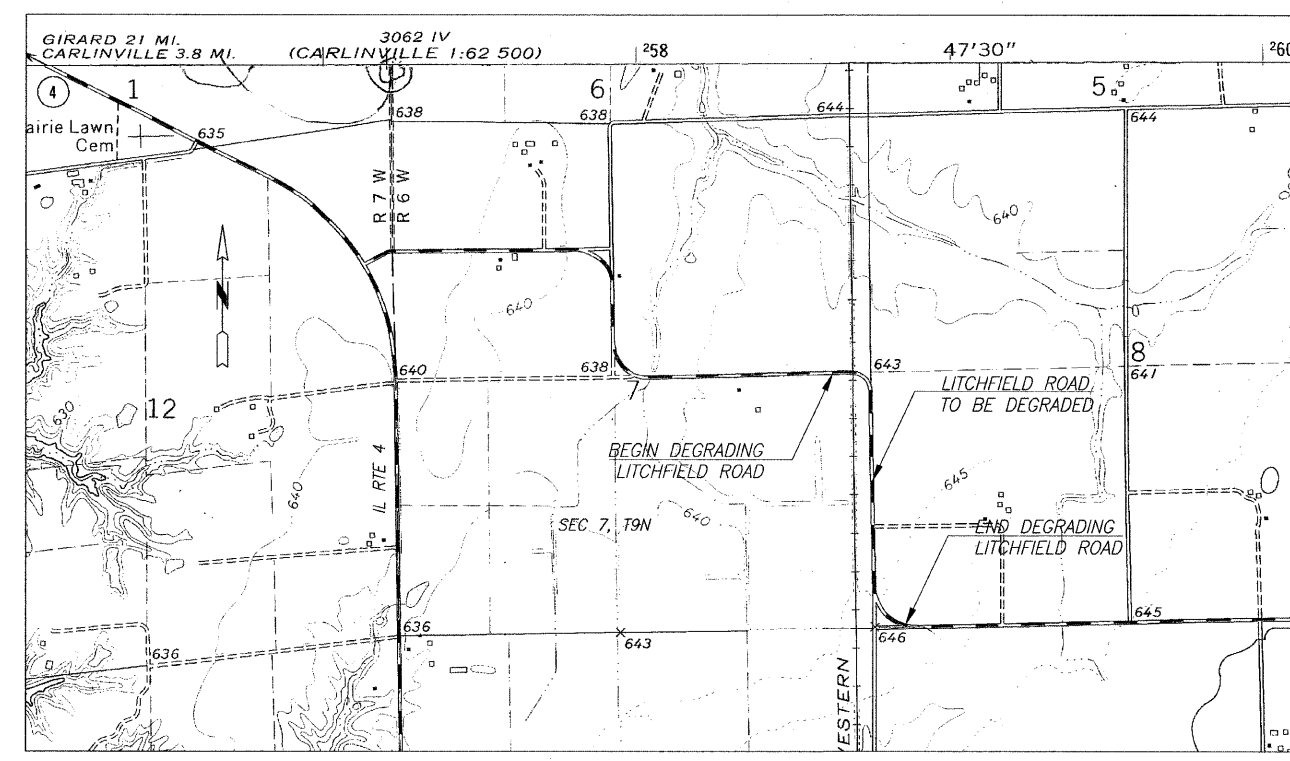
THE AREA TO BE SEEDDED SHALL CONSIST OF ALL DISTURBED EARTH SURFACES WITHIN THE RIGHT OF WAY AND EASEMENTS AS DIRECTED BY THE ENGINEER.

SEEDING, CLASS 2 (SPECIAL) = 12.6 ACRES

ALL TREES THAT INTERFERE WITH CONSTRUCTION WITHIN THE R.O.W. AND EASEMENTS SHALL BE REMOVED ONLY AT THE DIRECTION OF THE ENGINEER.

THE COST OF REMOVAL OF ANY OBSTRUCTIONS OR CULVERTS NOT OTHERWISE INCLUDED IN REMOVAL OF EXISTING STRUCTURES WHICH INTERFERE WITH CONSTRUCTION WILL BE CONSIDERED INCIDENTAL TO THE COST OF EARTH EXCAVATION.

ALL PLAN ELEVATIONS REPRESENT U.S.G.S. DATUM.



DEGRADING PLAN

PAVEMENT MARKING SCHEDULE

LOCATION	PAINT PAVEMENT MARKING - LETTERS AND SYMBOLS	PAINT PAVEMENT MARKING - LINE 4"		PAINT PAVEMENT MARKING - LINE 24"
		WHITE	YELLOW	
LITCHFIELD ROAD	SQUARE FOOT	FOOT	FOOT	FOOT
STA. 10+43 STOP BAR	-	-	-	19
E.B.L. STA. 53+87, STA. 54+37, STA. 57+72	-	-	-	33
W.B.L. STA. 58+06, STA. 61+41, STA. 61+91	-	-	-	33
STA. 10+20 TO STA. 141+50 CENTERLINE SKIP-DASH	-	-	3,290	-
STA. 10+20 TO STA. 11+38.94 EDGE LINES	-	351	-	-
STA. 11+38.94 TO STA. 141+50 EDGE LINES	-	25,622	-	-
E.B.L. STA. 54+12 W.B.L. STA. 61+66 (RR CROSSING)	122	-	-	-
E.B.L. 47+80 TO STA. 57+80 SOLID CENTERLINE NO PASSING	-	-	1,000	-
W.B.L. STA. 58+00 TO STA. 68+00 SOLID CENTERLINE NO PASSING	-	-	1,000	-
TOTALS	122	31,263	1,000	85

SIDEROAD & ENTRANCE SCHEDULE

STATION	ENTRANCE TYPE	W	L	CULVERT TYPE	CULVERT LENGTH	FILL VOLUME CY	AGG SURFACE TYPE B TON	PIPE TO BE REMOVED	SURFACE TYPE
LT 73+32	PE	14'	37'	15" CSCP	30'	41	22	15" CMP - 26'	AGG
RT 73+45	FE	20'	31'	15" CSCP	34'	49	-	15" CMP - 27'	DIRT
LT 86+75	SR CAVALIER	18'	30'	24" EQRS RCCP	45' (1)	27	47	24" CMP - 39'	AGG
LT 100+38	PE	14'	29'	18" CSCP	26'	21	17	18" CMP - 40'	AGG
RT 100+45	SR LILLY	18'	30'	3' x 2' PRECAST RCBC	48' (2)	41	47	24" CMP - 67'	AGG
RT 107+06	FE	20'	23'	18" EQRS CSCP	30'	18	-	15" CMP - 26'	DIRT
LT 114+00	FE	16'	23'	15" CSCP	26'	21	-	15" CMP - 23'	DIRT
TOTALS						218	133	248'	

(1) - 2 PRECAST REINFORCED CONCRETE ELLIPTICAL FLARED END SECTIONS
 (2) - 2 PRECAST REINFORCED CONCRETE FLARED END SECTIONS

ERECTING RIGHT OF WAY MARKERS

STATION	OFFSET (FEET)	EACH
LT 10+61.04	90.57	1
RT 10+58.98	89.42	1
LT 11+10.46	40.00	1
RT 11+09.55	40.00	1
LT & RT 13+50.00	40.00	2
LT & RT 14+50.00	50.00	2
LT & RT 15+50.00	50.00	2
LT & RT 16+50.00	40.00	2
LT & RT 25+00.00	40.00	2
LT & RT 26+00.00	50.00	2
LT & RT 27+00.00	50.00	2
LT & RT 28+00.00	40.00	2
LT & RT 45+00.00	40.00	2
LT & RT 46+00.00	50.00	2
LT & RT 48+00.00	50.00	2
LT & RT 49+00.00	40.00	2
LT & RT 53+00.00	40.00	2
LT & RT 56+00.00	60.00	2
LT 59+00.00	60.00	1
RT 60+17.45	54.10	1
LT & RT 61+00.00	50.00	2
LT & RT 80+00.00	50.00	2
LT & RT 81+00.00	40.00	2
LT 124+00.00	40.00	1
LT 125+00.00	50.00	1
RT 126+00.00	40.00	1
RT 127+00.00	50.00	1
LT & RT 128+00.00	50.00	2
LT & RT 129+00.00	40.00	2
RT 135+00.00	40.00	1
LT 136+00.00	40.00	1
RT 136+00.00	50.00	1
LT 137+00.00	50.00	1
LT 140+77.84	50.00	1
RT 140+78.43	50.00	1
TOTAL		54

SHEET TITLE

SUMMARY OF QUANTITIES

PROJECT: SECTION 06-00086-00-PV
 F.A.S. 2729 / C.H. 3
 MACOUPIN COUNTY

PROJECT NO. 03105
 SCALE
 DATE 09/11/09
 DRAWN BY PPW
 CHECKED BY MRL
 DRAWING NO.

COOMBE-BLOXDORF P.C.
 Engineers / Land Surveyors
 Springfield, Illinois
 Design Firm License No. 184-002703

2

OF 43 SHITS