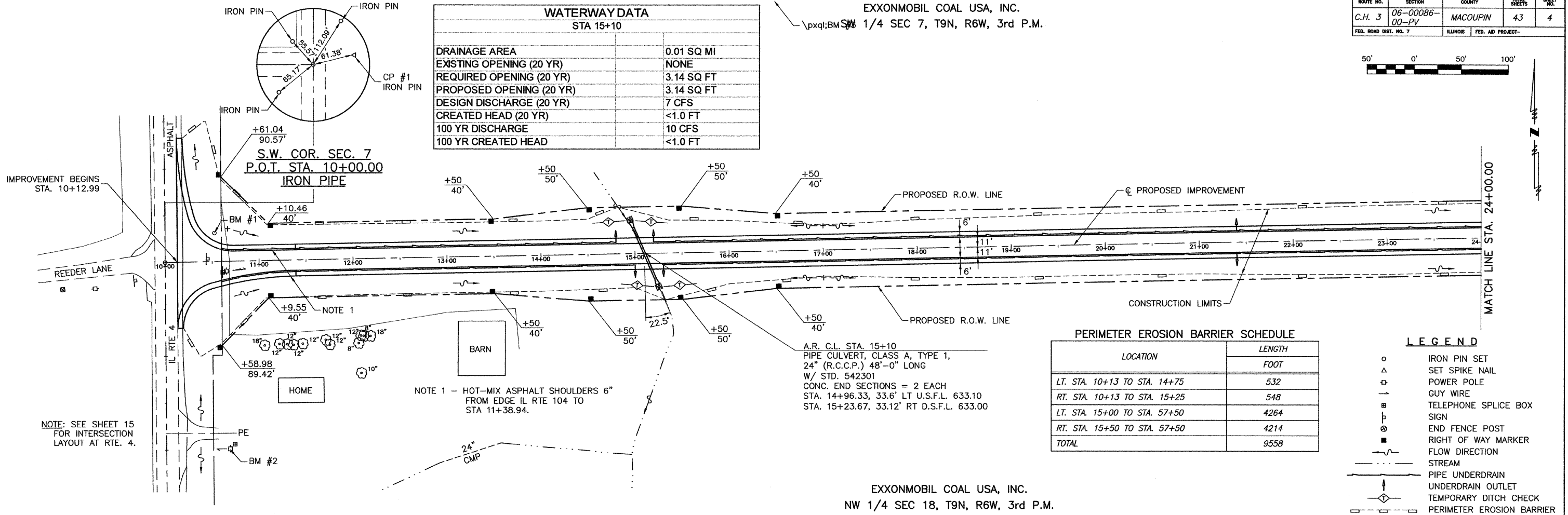


ROUTE NO.	SECTION	COUNTY	TOTAL SHEETS	SHEET NO.
C.H. 3	06-00086-00-PV	MACOUPIN	43	4
FED. ROAD DIST. NO. 7		ILLINOIS	FED. AID PROJECT-	

WATERWAY DATA STA 15+10	
DRAINAGE AREA	0.01 SQ MI
EXISTING OPENING (20 YR)	NONE
REQUIRED OPENING (20 YR)	3.14 SQ FT
PROPOSED OPENING (20 YR)	3.14 SQ FT
DESIGN DISCHARGE (20 YR)	7 CFS
CREATED HEAD (20 YR)	<1.0 FT
100 YR DISCHARGE	10 CFS
100 YR CREATED HEAD	<1.0 FT

EXXONMOBIL COAL USA, INC.
NW 1/4 SEC 7, T9N, R6W, 3rd P.M.



PERIMETER EROSION BARRIER SCHEDULE	
LOCATION	LENGTH FOOT
LT. STA. 10+13 TO STA. 14+75	532
RT. STA. 10+13 TO STA. 15+25	548
LT. STA. 15+00 TO STA. 57+50	4264
RT. STA. 15+50 TO STA. 57+50	4214
TOTAL	9558

- LEGEND**
- IRON PIN SET
 - △ SET SPIKE NAIL
 - POWER POLE
 - GUY WIRE
 - ⊕ TELEPHONE SPLICE BOX
 - ⊕ SIGN
 - ⊕ END FENCE POST
 - ⊕ RIGHT OF WAY MARKER
 - FLOW DIRECTION
 - STREAM
 - PIPE UNDERDRAIN
 - ⊕ UNDERDRAIN OUTLET
 - TEMPORARY DITCH CHECK
 - PERIMETER EROSION BARRIER

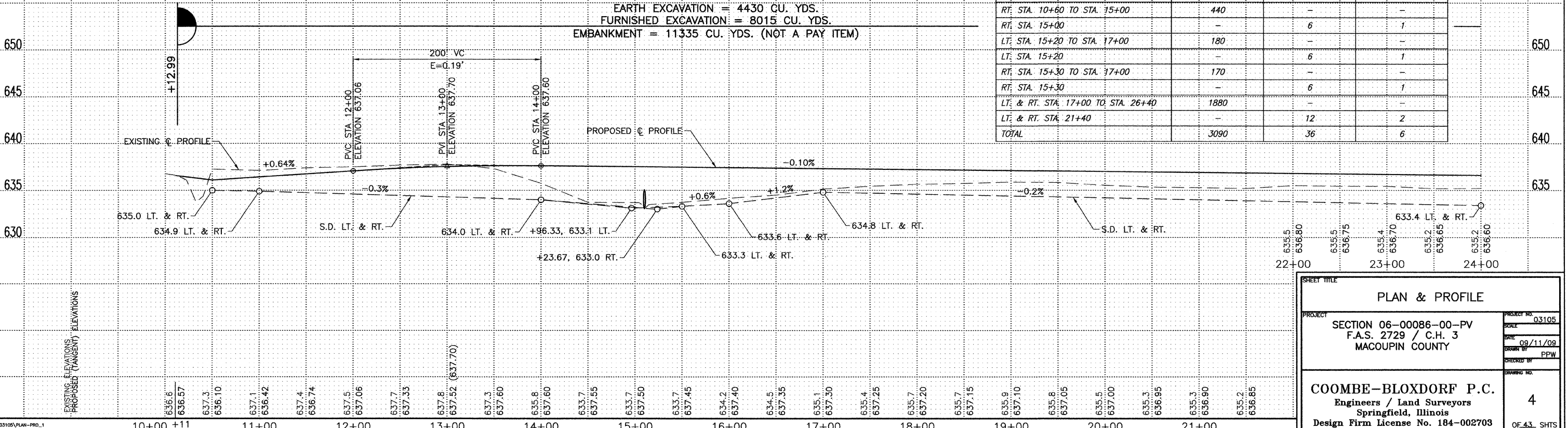
EXXONMOBIL COAL USA, INC.
NW 1/4 SEC 18, T9N, R6W, 3rd P.M.

BM #1 ~ BM 'D' - 5/8" REBAR IN EAST R.O.W. OF IL RTE 4
±300' NORTH OF BM #2
30.8' LT. STA. 10+53
ELEV. 637.54

BM #2 ~ BM-75A - R.R. SPIKE IN POWER POLE ON
EAST SIDE OF IL RTE 4
200.4' RT. STA. 10+65
ELEV. 638.64

BM #3 ~ TBM 'A' - METAL FENCE POST BURIED
±1.5' DEEP IN BEAN FIELD
266.1' LT. STA. 16+53
ELEV. 636.00

UNDERDRAIN SCHEDULE			
LOCATION	PIPE UNDERDRAIN 4" FOOT	PIPE UNDERDRAIN 4" (SPECIAL) FOOT	CONCRETE HEADWALL FOR PIPE DRAINS EACH
LT. STA. 10+60 TO STA. 14+80	420	-	-
LT. STA. 14+80	-	6	1
RT. STA. 10+60 TO STA. 15+00	440	-	-
RT. STA. 15+00	-	6	1
LT. STA. 15+20 TO STA. 17+00	180	-	-
LT. STA. 15+20	-	6	1
RT. STA. 15+30 TO STA. 17+00	170	-	-
RT. STA. 15+30	-	6	1
LT. & RT. STA. 17+00 TO STA. 26+40	1880	-	-
LT. & RT. STA. 21+40	-	12	2
TOTAL	3090	36	6



EARTH EXCAVATION = 4430 CU. YDS.
FURNISHED EXCAVATION = 8015 CU. YDS.
EMBANKMENT = 11335 CU. YDS. (NOT A PAY ITEM)

SHEET TITLE
PLAN & PROFILE

PROJECT: SECTION 06-00086-00-PV
F.A.S. 2729 / C.H. 3
MACOUPIN COUNTY

PROJECT NO. 03105
SCALE
DATE 09/11/09
DRAWN BY PPW
CHECKED BY
DRAWING NO.

COOMBE-BLOXDORF P.C.
Engineers / Land Surveyors
Springfield, Illinois
Design Firm License No. 184-002703

4
OF 43 SHTS