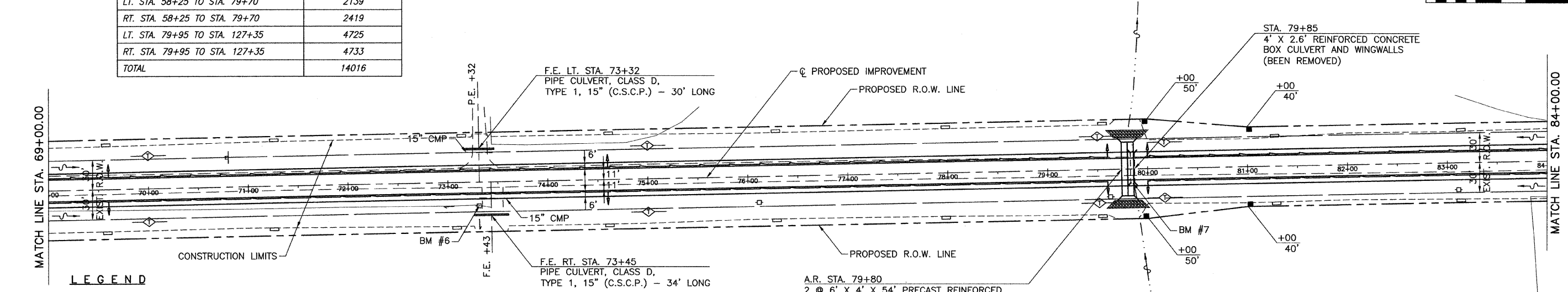


EXXONMOBIL COAL USA, INC.
SW 1/4 SEC 8, T9N, R6W, 3rd P.M.

ROUTE NO.	SECTION	COUNTY	TOTAL SHEETS	SHEET NO.
C.H. 3	06-00086-00-PV	MACOUPIN	43	8
FED. ROAD DIST. NO. 7		ILLINOIS	FED. AID PROJECT-	

PERIMETER EROSION BARRIER SCHEDULE

LOCATION	LENGTH
	FOOT
LT. STA. 58+25 TO STA. 79+70	2139
RT. STA. 58+25 TO STA. 79+70	2419
LT. STA. 79+95 TO STA. 127+35	4725
RT. STA. 79+95 TO STA. 127+35	4733
TOTAL	14016



LEGEND

- IRON PIN SET
- △ SET SPIKE NAIL
- POWER POLE
- GUY WIRE
- ⊠ TELEPHONE SPLICE BOX
- SIGN
- ⊞ END FENCE POST
- RIGHT OF WAY MARKER
- FLOW DIRECTION
- STREAM
- PIPE UNDERDRAIN
- UNDERDRAIN OUTLET
- ◇ TEMPORARY DITCH CHECK
- PERIMETER EROSION BARRIER

UNDERDRAIN SCHEDULE

LOCATION	PIPE UNDERDRAIN 4"	PIPE UNDERDRAIN 4" (SPECIAL)	CONCRETE HEADWALL FOR PIPE DRAINS
	FOOT	FOOT	EACH
LT. & RT. STA. 69+60	-	12	2
LT. & RT. STA. 74+60	-	12	2
LT. & RT. STA. 79+60	-	12	2
LT. & RT. STA. 80+00 TO STA. 120+00	8000	-	-
LT. & RT. STA. 80+00	-	12	2
TOTAL	8000	48	8

A.R. STA. 79+80
2 @ 6' X 4' X 54' PRECAST REINFORCED CONCRETE BOX CULVERT M273 AND CAST-IN-PLACE HEADWALLS AND WINGWALLS
27' RT, U.S.F.L. 632.30
27' LT, D.S.F.L. 632.09
SEE SHEET 16 OF 43 FOR HEADWALL DETAILS
FILL HEIGHT < 2'

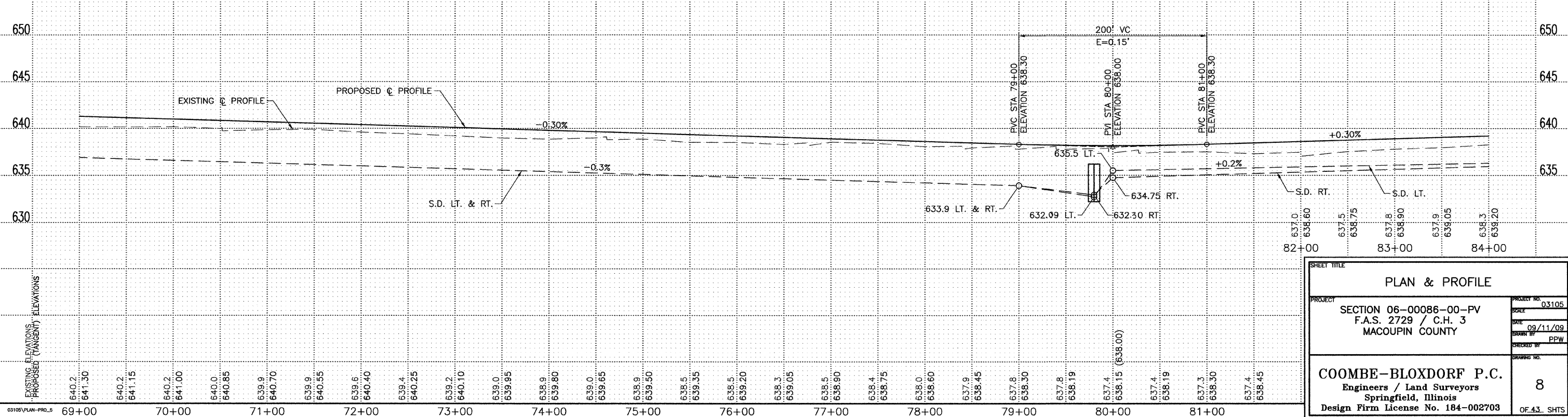
WATERWAY DATA STA 79+85	
DRAINAGE AREA	0.402 SQ MI
EXISTING OPENING (20 YR)	10.4 SQ FT
REQUIRED OPENING (20 YR)	48 SQ FT
PROPOSED OPENING (20 YR)	48 SQ FT
DESIGN DISCHARGE (20 YR)	192 CFS
CREATED HEAD (20 YR)	<1.0 FT
100 YR DISCHARGE	284 CFS
100 YR CREATED HEAD	<1.0 FT

EXXONMOBIL COAL USA, INC.
NW 1/4 SEC 17, T9N, R6W, 3rd P.M.

BM #6 ~ TBM 'C' - R.R. SPIKE IN POWER POLE
1ST POWER POLE WEST END LITCHFIELD RD
26.8' RT. STA: 73+31
ELEV. 639.85

BM #7 ~ TBM 'D' - CHISELED "□" ON SOUTH HEADWALL
OF BOX CULVERT
15.9' RT. STA. 79+85
ELEV. 673.54

EARTH EXCAVATION = 10,270 CU. YDS.
FURNISHED EXCAVATION = 5,760 CU. YDS.
EMBANKMENT = 13,460 CU. YDS. (NOT A PAY ITEM)



PLAN & PROFILE	
PROJECT SECTION 06-00086-00-PV F.A.S. 2729 / C.H. 3 MACOUPIN COUNTY	PROJECT NO. 03105 SCALE DATE 09/11/09 DRAWN BY PPW CHECKED BY DRAWING NO.
COOMBE-BLOXDRF P.C. Engineers / Land Surveyors Springfield, Illinois Design Firm License No. 184-002703	
8	
OF 43 SHTS	