

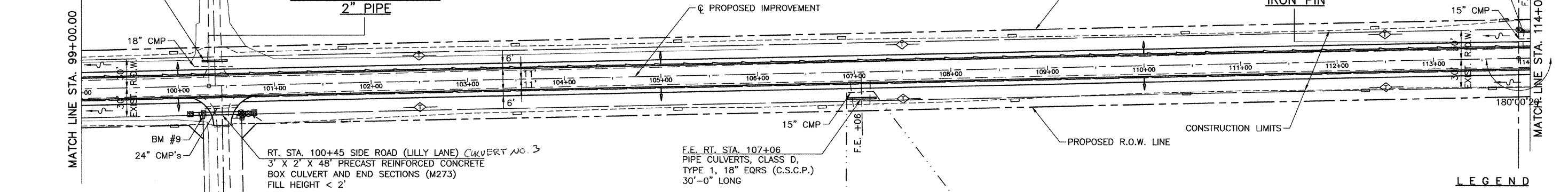
EXXONMOBIL COAL USA, INC.  
SE 1/4 SEC 8, T9N, R6W, 3rd P.M.

ROUTE NO.	SECTION	COUNTY	TOTAL SHEETS	SHEET NO.
C.H. 3	06-00086-00-PV	MACOUPIN	43	10
FED. ROAD DIST. NO. 7		ILLINOIS	FED. AID PROJECT-	

P.E. LT. STA. 100+38  
PIPE CULVERTS, CLASS D,  
TYPE 1, 18" (C.S.C.P.)  
26'-0" LONG

S.W. COR. S.E. 1/4, S.E. 1/4, SEC. 8  
P.O.T. STA. 100+31.85  
2" PIPE

S.W. COR. SEC. 9  
P.I. STA. 113+87.95  
IRON PIN



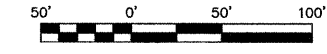
RT. STA. 100+45 SIDE ROAD (LILLY LANE) CULVERT NO. 3  
3' X 2' X 48' PRECAST REINFORCED CONCRETE  
BOX CULVERT AND END SECTIONS (M273)  
FILL HEIGHT < 2'

F.E. RT. STA. 107+06  
PIPE CULVERTS, CLASS D,  
TYPE 1, 18" EQRS (C.S.C.P.)  
30'-0" LONG

UNDERDRAIN SCHEDULE

LOCATION	PIPE UNDERDRAIN 4"	PIPE UNDERDRAIN 4" (SPECIAL)	CONCRETE HEADWALL FOR PIPE DRAINS
	FOOT	FOOT	EACH
LT. & RT. STA. 100+00	-	12	2
LT. & RT. STA. 105+00	-	12	2
LT. & RT. STA. 110+00	-	12	2
TOTAL	-	36	6

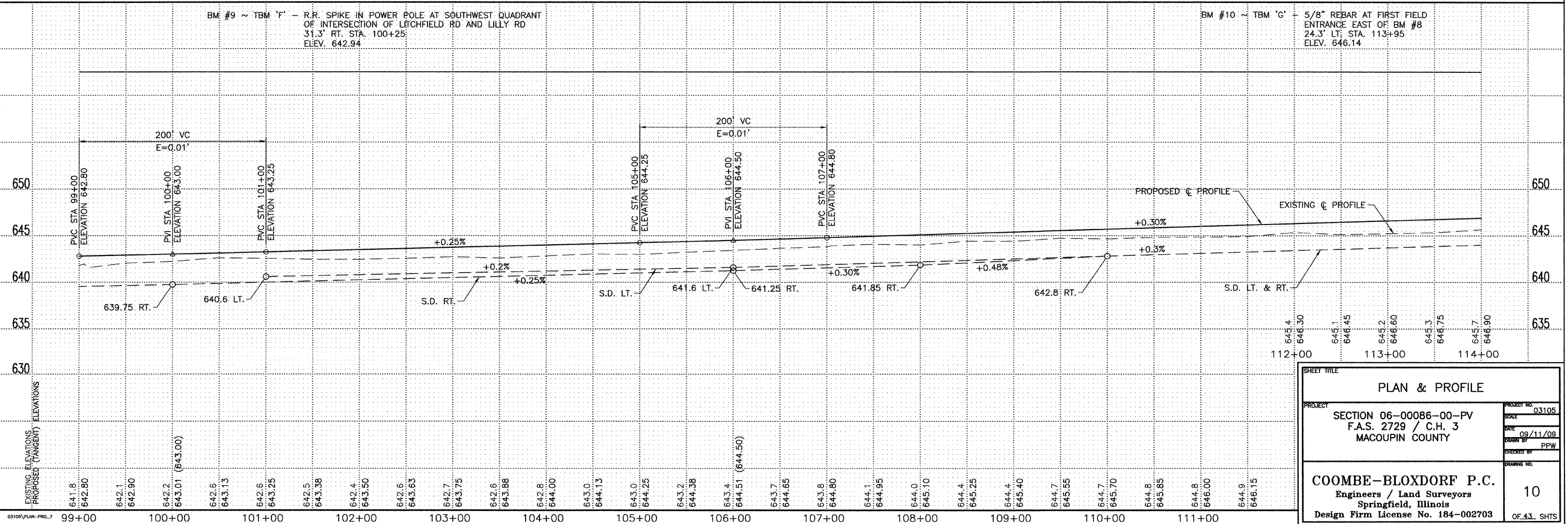
EXXONMOBIL COAL USA, INC.  
NE 1/4 SEC 17, T9N, R6W, 3rd P.M.



- LEGEND**
- IRON PIN SET
  - △ SET SPIKE NAIL
  - POWER POLE
  - GUY WIRE
  - ⊞ TELEPHONE SPLICE BOX
  - ⊞ SIGN
  - ⊞ END FENCE POST
  - ⊞ RIGHT OF WAY MARKER
  - FLOW DIRECTION
  - STREAM
  - PIPE UNDERDRAIN
  - UNDERDRAIN OUTLET
  - TEMPORARY DITCH CHECK
  - PERIMETER EROSION BARRIER

BM #9 ~ TBM 'F' - R.R. SPIKE IN POWER POLE AT SOUTHWEST QUADRANT  
OF INTERSECTION OF LITCHFIELD RD AND LILLY RD  
31.3' RT. STA. 100+25  
ELEV. 642.94

BM #10 ~ TBM 'G' - 5/8" REBAR AT FIRST FIELD  
ENTRANCE EAST OF BM #8  
24.3' LT. STA. 113+95  
ELEV. 646.14



<b>PLAN &amp; PROFILE</b>		
PROJECT	SECTION 06-00086-00-PV F.A.S. 2729 / C.H. 3 MACOUPIN COUNTY	PROJECT NO. 03105
DATE	09/11/09	SCALE
DRAWN BY	PPW	CHECKED BY
<b>COOMBE-BLOXDORF P.C.</b> Engineers / Land Surveyors Springfield, Illinois Design Firm License No. 184-002703		SHEET NO. <b>10</b> OF 43 SHTS