

- INDEX OF SHEETS**
- 1 - TITLE SHEET
 - 2 - SUMMARY OF QUANTITIES & TYPICAL SECTIONS
 - 3 - ROADWAY DETAILS & SCHEDULES
 - 4 - PLAN & PROFILE
 - 5&6 - GENERAL PLAN & ELEVATION
 - 7-10 - SUPERSTRUCTURE
 - 11 - RAILING
 - 12 - ABUTMENTS
 - 13 - PIERS
 - 14 - METAL SHELL PILE DETAILS
 - 15-18 - CROSS SECTIONS

STANDARDS

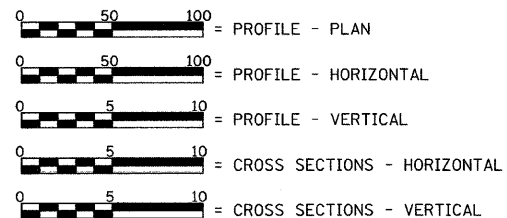
- STANDARD 515001-03
- STANDARD 701006-03
- STANDARD 701301-03
- STANDARD 701901-01
- STANDARD BLR 21-8
- STANDARD BLR 26-2
- STANDARD BLR 27-1
- STANDARD 280001-05

UTILITIES

RURAL ELECTRIC
CONVENIENCE COOPERATIVE
3973 W. STATE RT. 104
P.O. BOX 19
AUBURN, ILLINOIS 62615
217-438-6197

CASS COMMUNICATIONS
100 REDBUD RD.
VIRGINIA, ILLINOIS 62691
217-452-7725

SCALE IN FEET



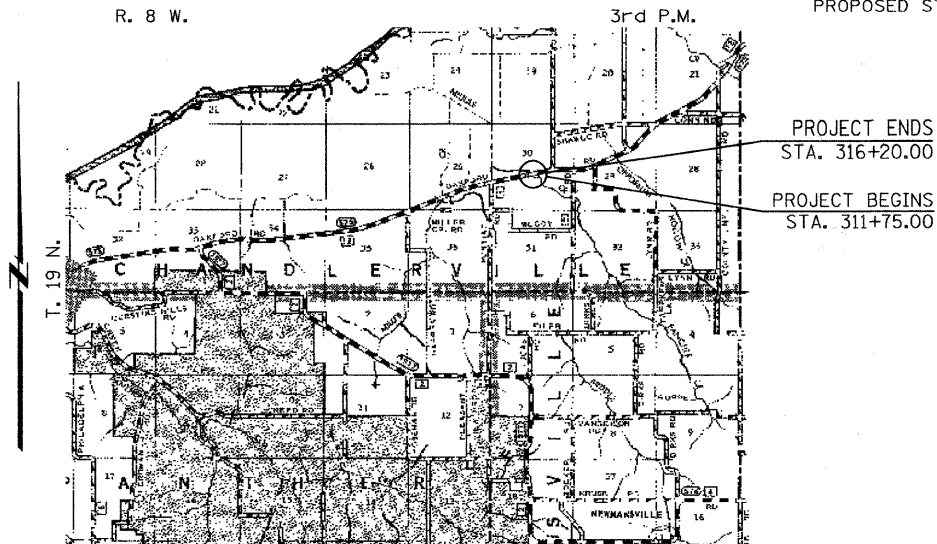
LAND SECTION - 30
 LAND QUARTER SECTION - S.W.
 FUNCTIONAL CLASSIFICATION: MAJOR COLLECTOR (NON-URBAN)
 A.D.T. - 450 (2006)
 A.D.T. - 650 (2019)
 50 M.P.H. DESIGN SPEED

STATE OF ILLINOIS
DEPARTMENT OF TRANSPORTATION
PLANS FOR PROPOSED
HIGHWAY BRIDGE PROGRAM w/ ARRA

PROJECT ARA-BRS-0575(312)
F.A.S. 575 (C.H. 12) OVER MIDDLE CREEK
SECTION 09-00074-00-BR
CASS COUNTY
C-96-204-10

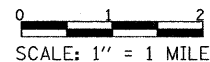
EXISTING STRUCTURE: THREE SPAN CAST IN PLACE CONCRETE DECK BRIDGE ON STEEL STRINGERS SUPPORTED BY CONCRETE ABUTMENTS AND PIERS FOUNDED ON TIMBER PILING. 24'-0" CLEAR DECK WIDTH, 84'-11" BK.-BK. ABUTMENTS AND STEEL RAILING. 20° SKEW RT. FWD. EXIST. S.N. 009-3004

PROPOSED STRUCTURE: THREE SPAN PRECAST PRESTRESSED CONCRETE DECK BEAMS (17") ON OPEN ABUTMENTS AND SOLID CONCRETE PIERS. 95'-0" BK.-BK. ABUTMENTS, 30'-0" OUT.-OUT. DECK, 28'-8" (SPANS 1 & 3), 35'-0" (SPAN 2). STEEL RAILING TYPE S-1. 20° SKEW RT. FWD. PROP. S.N. 009-3005



LOCATION PLAN

LENGTH OF SECTION - 445.00 FEET = 0.084 MILES



Christopher P. Kohler 10/21/09
 EXPIRATION: 11/30/2009

APPROVED OCT 23, 2009
Timothy L. Daugherty
 COUNTY ENGINEER

PASSED Nov 23, 2009
Tom J. D.
 DISTRICT SIX ENGINEER OF LOCAL ROADS & STREETS

PASSED November 23, 2009
Ron Chamberlain
 DISTRICT SIX CONSTRUCTION ENGINEER

Releasing For Bid Based on Limited Review Nov 23, 2009
Roger R. Dussell
 DEPUTY DIRECTOR OF HIGHWAYS, REGION FOUR ENGINEER

STATE OF ILLINOIS
 DEPARTMENT OF TRANSPORTATION

TOLL FREE
 "JOINT UTILITY LOCATION INFORMATION FOR EXCAVATORS"
 (J.U.L.I.E.) TELEPHONE NUMBER
 1-800-892-0123

CONTRACT NO. 93508

FILE NAME =	USER NAME = #USER*	DESIGNED -	REVISED -	Allen Henderson & Associates, Inc. Civil and Structural Engineers Springfield, IL. 62703 Phone: (217)544-8033 IL Design Firm No. 184-001907	TITLE SHEET		F.A.S. RTE.	SECTION	COUNTY	TOTAL SHEETS	SHEET NO.	
#FILEL#		DRAWN -	REVISED -		SCALE: 1" = 1 MILE	SHEET NO. 1 OF 18 SHEETS	STA. 311+75.00 TO STA. 316+20.00	575	09-00074-00-BR	CASS	18	1
		CHECKED -	REVISED -								CONTRACT NO. 93508	
		DATE -	REVISED -								FED. ROAD DIST. NO. ILLINOIS FED. AID PROJECT	