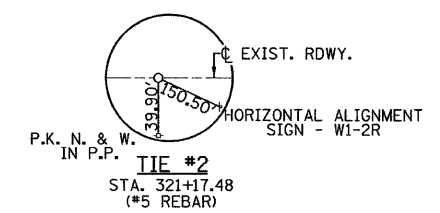
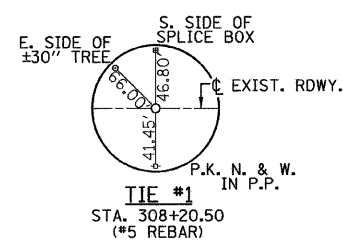


DATE	
BY	
PLANNING	
DESIGNED	
CHECKED	
DRAWN	
NOTED	
NO.	

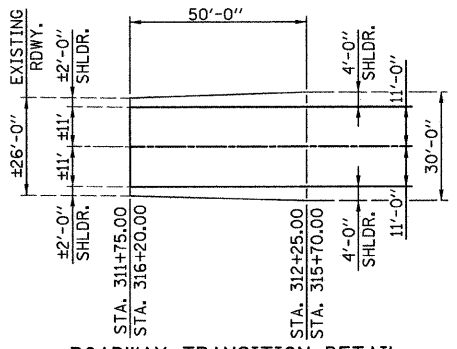
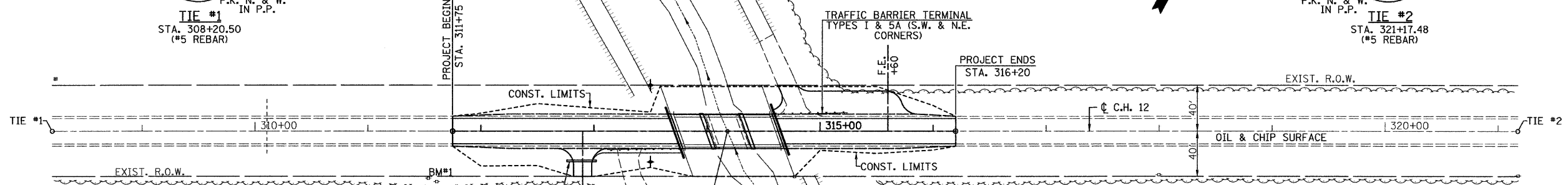
DATE	
BY	
PROFILE	
DESIGNED	
CHECKED	
DRAWN	
NOTED	
NO.	



SECTION 30 T. 19 N. R. 8 W., 3rd P.M.

ROBERT E. SEVERNES

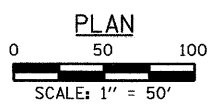
HOBBS MARJORIE (LIFE EST.) ETAL



INSTALL NEW 18"Ø X 26' PIPE CULVERTS, CLASS D, TYPE 1  
INLET - EL. 483.2  
OUTLET - EL. 482.9

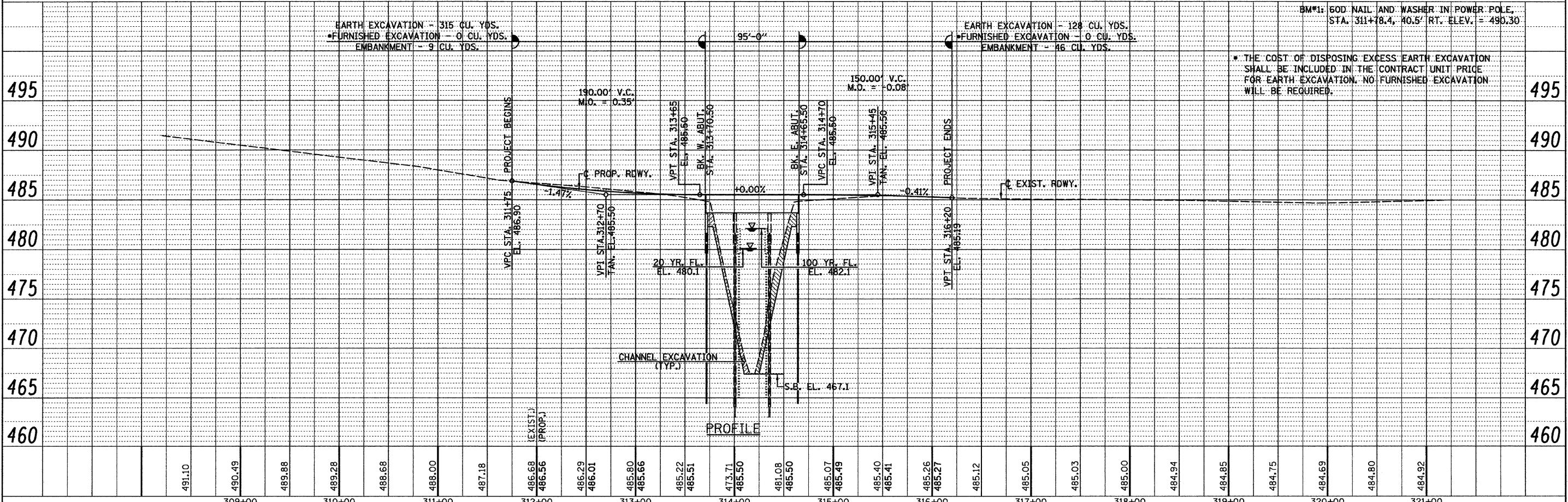
STA. 314+18.00 - Ø RDWY. AT Ø STRUCTURE  
PROPOSED STRUCTURE: THREE SPAN PRECAST PRESTRESSED CONCRETE DECK BEAMS (17") ON OPEN CONCRETE ABUTMENTS AND SOLID CONCRETE PIERS. 95'-0" BK.-BK. ABUTMENTS, 30'-0" OUT.-OUT. DECK, 28'-8" (SPANS 1 & 3), 35'-0" (SPAN 2). STEEL RAILING TYPE S-1. 20° SKEW.

TONY LEE & CECELIA ANTONACCI



TONY LEE & CECELIA ANTONACCI

ROADWAY TRANSITION DETAIL



FILE NAME =	USER NAME = #USER#	DESIGNED -	REVISED -	<p>Allen Henderson &amp; Associates, Inc. Civil and Structural Engineers Springfield, IL 62703 Phone: (217)544-8033 IL Design Firm No. 184-001907</p>	F.A.S. RTE.	SECTION	COUNTY	TOTAL SHEETS	SHEET NO.
#FILE#		CHECKED -	REVISED -		575	09-0074-00-BR	CASS	18	4
PLOT SCALE = #SCALE#		DRAWN -	REVISED -		CONTRACT NO. 3508				
PLOT DATE = #DATE#		CHECKED -	REVISED -		FED. ROAD DIST. NO. ILLINOIS FED. AID PROJECT				

SCALE: 1" = 50' SHEET NO. 4 OF 18 SHEETS STA. 311+75.00 TO STA. 316+20.00