

**NOTES**

1. All exposed edges shall have standard 3/4" chamfer.

2. Space reinforcement in cap to miss beam anchor dowels.

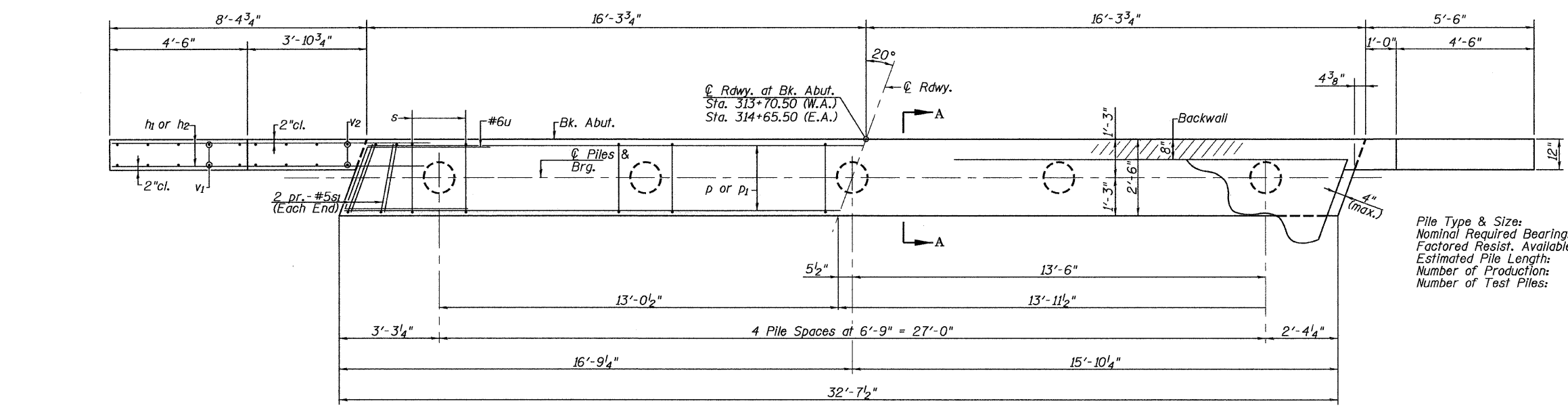
3. Wingwalls and Backwalls may, at the contractor's option, be cast monolithically.

4. Hatched area and wingwalls shall be poured after deck beams are anchored in place.

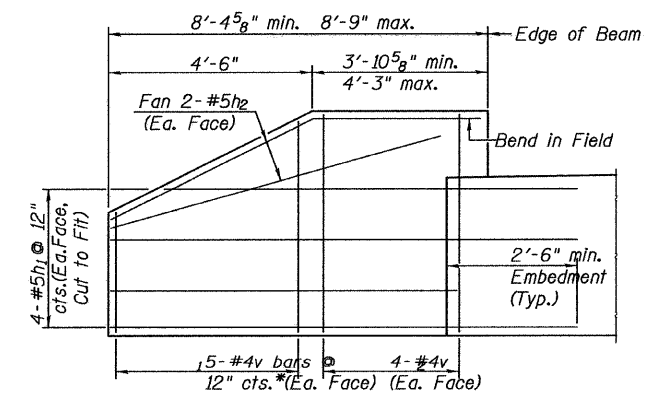
5. The Test Pile shall be driven to 110 percent of the Nominal Required Bearing indicated in the pile data information.

**ELEVATION**  
(W. Abut. Looking West)  
(E. Abut. Looking East)

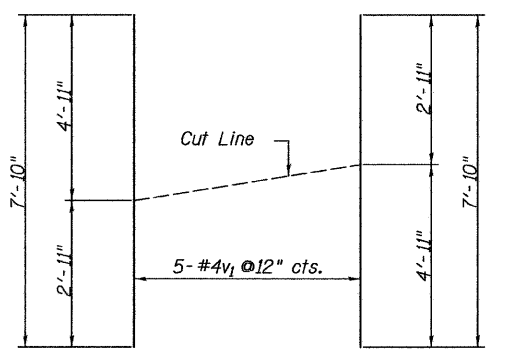
**SECTION A-A**



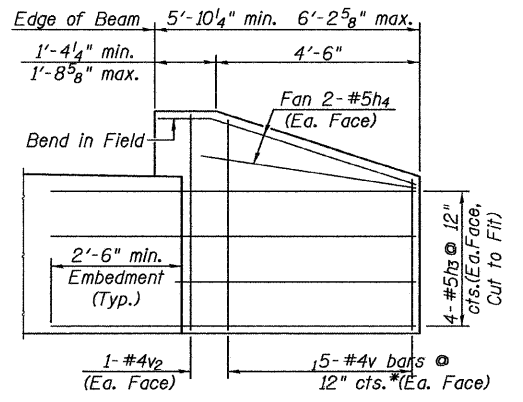
**PLAN**



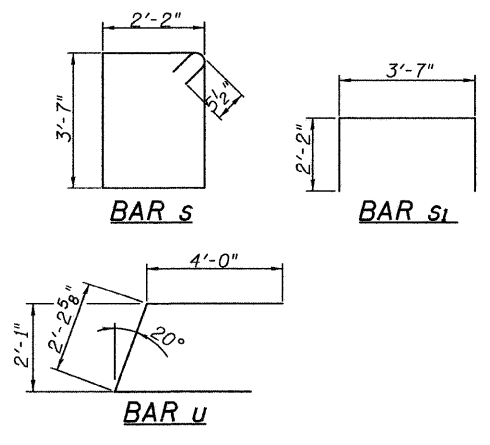
**WINGWALL ELEVATION**  
(S.W. & N.E. Corners)  
(Showing Reinforcement)



**BAR CUT DIAGRAM**



**WINGWALL ELEVATION**  
(N.W. & S.E. Corners)  
(Showing Reinforcement)



**PILE DATA**

	W. Abut.	E. Abut.
Metal Shell 12"x0.25"	212 Kips	212 Kips
Nominal Required Bearing- Factored Resist. Available:	106 Kips	106 Kips
Estimated Pile Length:	43'	50'
Number of Production:	4	4
Number of Test Piles:	1	1

**TWO ABUTMENTS BILL OF MATERIAL**

BAR	NO.	SIZE	LENGTH	SHAPE
h	12	#4	34'-3"	—
h1	16	#5	10'-11"	—
h2	8	#5	8'-5"	—
h3	16	#5	8'-5"	—
h4	8	#5	5'-8"	—
p	16	#7	32'-3"	—
p1	8	#5	32'-3"	—
s	60	#5	12'-5"	□
s1	16	#5	7'-11"	□
u	16	#6	10'-3"	∟
v	132	#4	2'-8"	—
v1	20	#4	7'-10"	—
v2	20	#4	5'-1"	—
Concrete Structures				Cu. Yd. 316
Reinforcement Bars				Pound 3605
Furnishing Metal Shell Pile 12" x 0.250"				Foot 372
Driving Piles				Foot 372
Test Pile Metal Shells				Each 2
Structure Excavation				Cu. Yd. 97