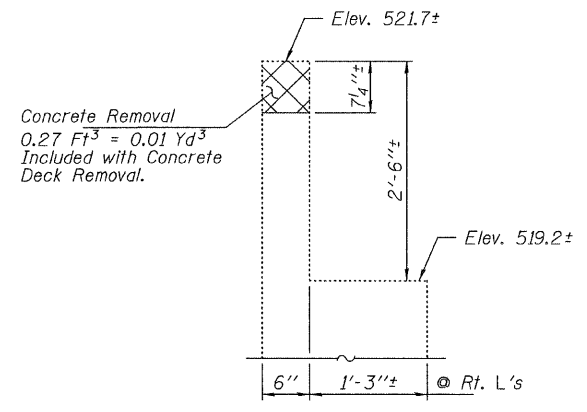
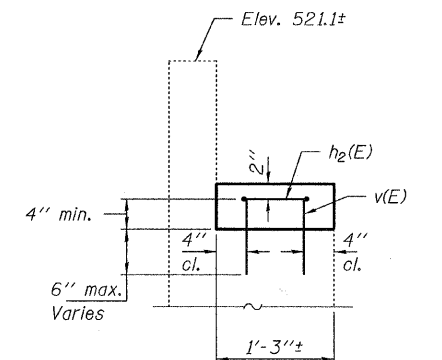


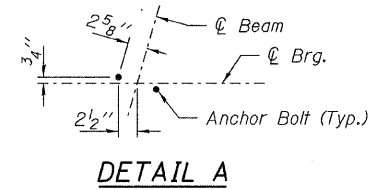
PLAN



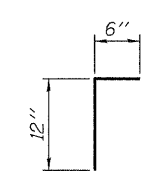
SECTION A-A



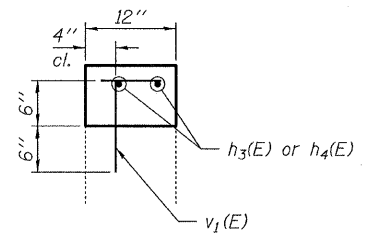
SECTION B-B



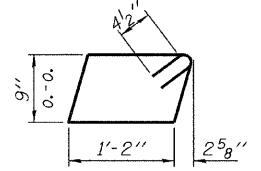
DETAIL A



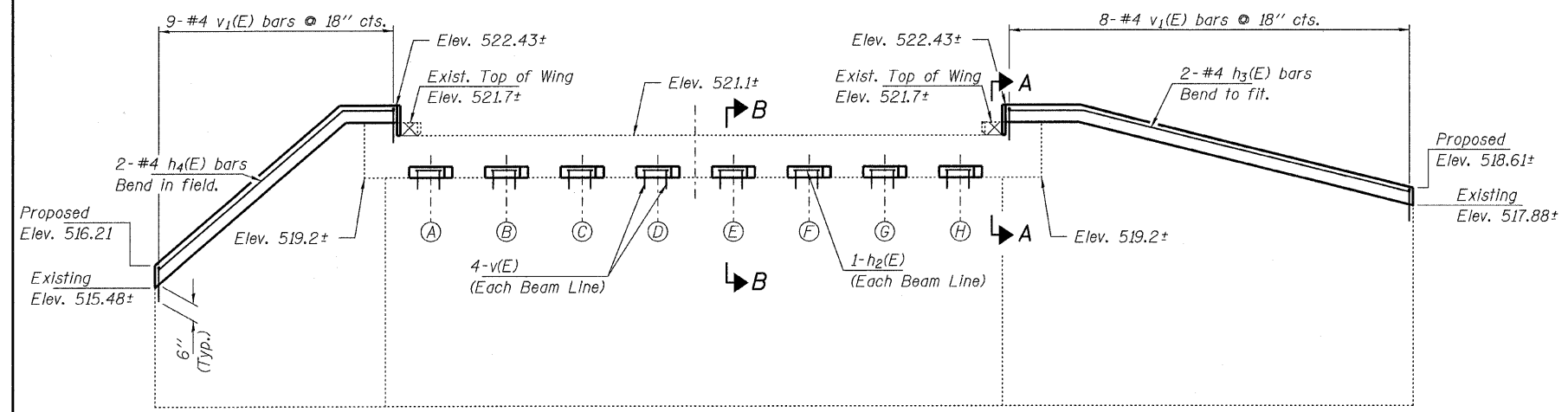
BAR v1(E)



SECTION C-C



BAR h2(E)



ELEVATION
(Looking South)

BEARING SEAT ELEVATIONS

LINE	ELEVATION
A	519.83
B	519.90
C	519.97
D	520.03
E	520.03
F	519.97
G	519.90
H	519.83

BILL OF MATERIAL - S. ABUT.

BAR	NO.	SIZE	LENGTH	SHAPE
h2(E)	8	#4	4'-8"	□
h3(E)	2	#4	12'-8"	—
h4(E)	2	#4	13'-7"	—
v(E)	32	#4	10"	—
v1(E)	17	#4	1'-6"	Γ
Concrete Structures			Cu. Yd.	1.2
Reinforcement Bars, Epoxy Coated			Pound	90

Reinforcement bars designated (E) shall be epoxy coated.

**SOUTH ABUTMENT
STRUCTURE NO. 005-3006**

DESIGNED - A.S.L.
CHECKED - S.W.M.
DRAWN - D.A.B.
CHECKED - S.W.M.

Hatched area indicates Concrete Removal. Cost included with Removal of Existing Concrete Deck.

HAMPTON, LENZINI & RENWICK, INC.
 CIVIL & STRUCTURAL ENGINEERS
 LAND SURVEYORS
 3085 STEVENSON DRIVE, SUITE 201
 SPRINGFIELD, ILLINOIS 62703
 (217) 546-3400
 PROJECT NUMBER: 08.0204.130 DATE: 11/10/09

C.H.	SECTION	COUNTY	TOTAL SHEETS	SHEET NO.
3A	05-00065-00-BR	BROWN	24	23
CONTRACT NO. 93509				
FED. ROAD DIST. NO. ILLINOIS FED. AID PROJECT ARA 1583(103)				