

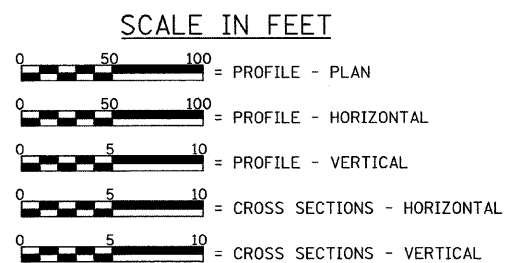
- INDEX OF SHEETS**
- 1 - TITLE SHEET
  - 2 - SUMMARY OF QUANTITIES, DETAILS, & TYPICAL SECTIONS
  - 3 - PLAN & PROFILE
  - 4&5 - GENERAL PLAN & ELEVATION
  - 6-9 - SUPERSTRUCTURE
  - 10 - RAILING
  - 11 - ABUTMENTS
  - 12 - PIERS
  - 13 - HP PILE DETAILS
  - 14-17 - CROSS SECTIONS

- STANDARDS**
- STANDARD 515001-03
  - STANDARD 701011-02
  - STANDARD 701901-01
  - STANDARD BLR 21-8
  - STANDARD BLR 23-3
  - STANDARD BLR 26-1
  - STANDARD BLR 27-1

**LIST OF UTILITIES**

FRONTIER COMMUNICATIONS  
1-800-921-8101

MENARD ELECTRIC COOPERATIVE  
P.O. BOX 100  
PETERSBURG, ILLINOIS 62675  
1-217-632-7746



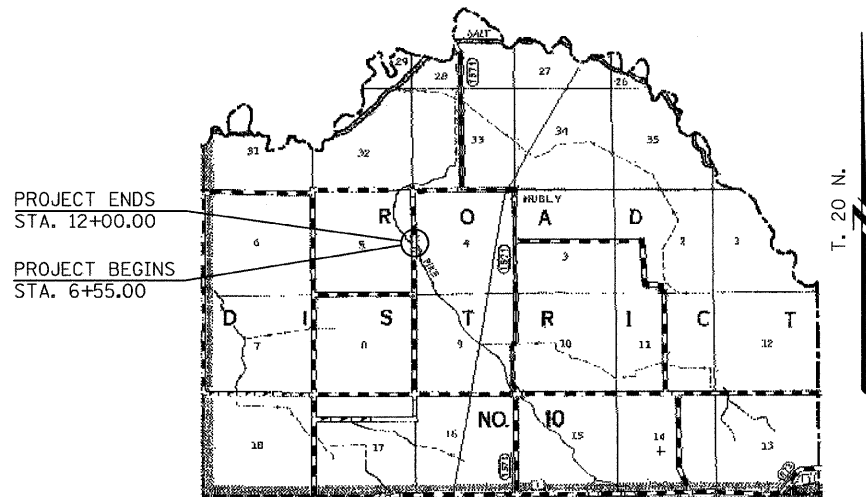
LAND SECTIONS - 4 & 5  
LAND QUARTER SECTION - N.W. & N.E.  
FUNCTIONAL CLASSIFICATION: LOCAL ROAD (NON-URBAN)  
A.D.T. - 79 (2004)  
A.D.T. - 90 (2020)  
30 M.P.H. DESIGN SPEED

# STATE OF ILLINOIS DEPARTMENT OF TRANSPORTATION

## PLANS FOR PROPOSED HIGHWAY BRIDGE PROGRAM

T.R. 166 OVER PIKE CREEK  
SECTION 08-10110-00-BR  
PROJECT BROS-0129(023)  
MENARD COUNTY / ROAD DISTRICT NO. 10  
C-96-230-09

R. 5 W. 3rd P.M.



PROJECT ENDS  
STA. 12+00.00

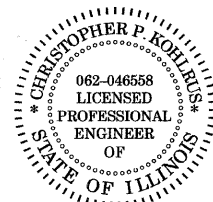
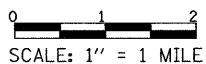
PROJECT BEGINS  
STA. 6+55.00

EXISTING STRUCTURE: TWO SPAN TIMBER DECK ON STEEL STRINGERS SUPPORTED BY CLOSED TIMBER ABUTMENTS AND PIER WITH TIMBER WINGWALLS. ±40'-6" BK.-BK. ABUTMENTS, ±20'-6" OUT.-OUT. DECK. TIMBER CURBS AND STEEL RAILING. ±0° SKEW.  
EXISTING STRUCTURE NO: 065-3065

PROPOSED STRUCTURE: THREE SPAN PRECAST PRESTRESSED CONCRETE DECK BEAM BRIDGE (17" DEPTH) ON OPEN CONCRETE ABUTMENTS AND PILE BENT PIERS. 28'-0" OUT.-OUT DECK, 72'-0" BK.-BK. ABUTMENTS, 21'-5" (SPANS 1 & 3), 23'-7 1/2" (SPAN 2), STEEL RAILING, TYPE S-1. 25° SKEW LT. FWD.  
PROPOSED STRUCTURE NO. 065-3122

**LOCATION PLAN**

LENGTH OF SECTION - 545.00 FEET = 0.103 MILES



*Christopher P. Kohler* 10/25/09  
EXPIRATION: 11/30/2009

APPROVED <u>Oct 27</u> , 2009 <i>Thomas R. Cassano</i> COUNTY ENGINEER
PASSED <u>Nov 24</u> , 2009 <i>Tom D. L.</i> DISTRICT SIX ENGINEER OF LOCAL ROADS & STREETS
PASSED <u>November 23</u> , 2009 <i>Ron Dehambauer</i> DISTRICT SIX ENGINEER OF LOCAL ROADS & STREETS DISTRICT SIX CONSTRUCTION ENGINEER
Releasing For Bid Based on Limited Review <u>Nov 24</u> , 2009 <i>Roger H. Marshall</i> DEPUTY DIRECTOR OF HIGHWAYS, REGION FOUR ENGINEER STATE OF ILLINOIS DEPARTMENT OF TRANSPORTATION

TOLL FREE  
"JOINT UTILITY LOCATION INFORMATION FOR EXCAVATORS"  
(J.U.L.I.E.) TELEPHONE NUMBER  
1-800-892-0123

CONTRACT NO. **93510**

FILE NAME =	USER NAME = #USER#	DESIGNED -	REVISED -	<b>Allen Henderson &amp; Associates, Inc.</b> Civil and Structural Engineers Springfield, IL. 62703 Phone: (217)544-8033 IL Design Firm No. 184-001907	<b>TITLE SHEET</b>	T.R. RTE. 166	SECTION 08-10110-00-BR	COUNTY MENARD	TOTAL SHEETS 17	SHEET NO. 1	
#FILE#	PLOT SCALE = #SCALE#	DRAWN -	REVISED -		SCALE: 1" = 1 MILE   SHEET NO. 1 OF 17 SHEETS	STA. 6+55.00 TO STA. 12+00.00		CONTRACT NO. <b>93510</b>			
	PLOT DATE = #DATE#	CHECKED -	REVISED -		FED. ROAD DIST. NO. ILLINOIS FED. AID PROJECT						