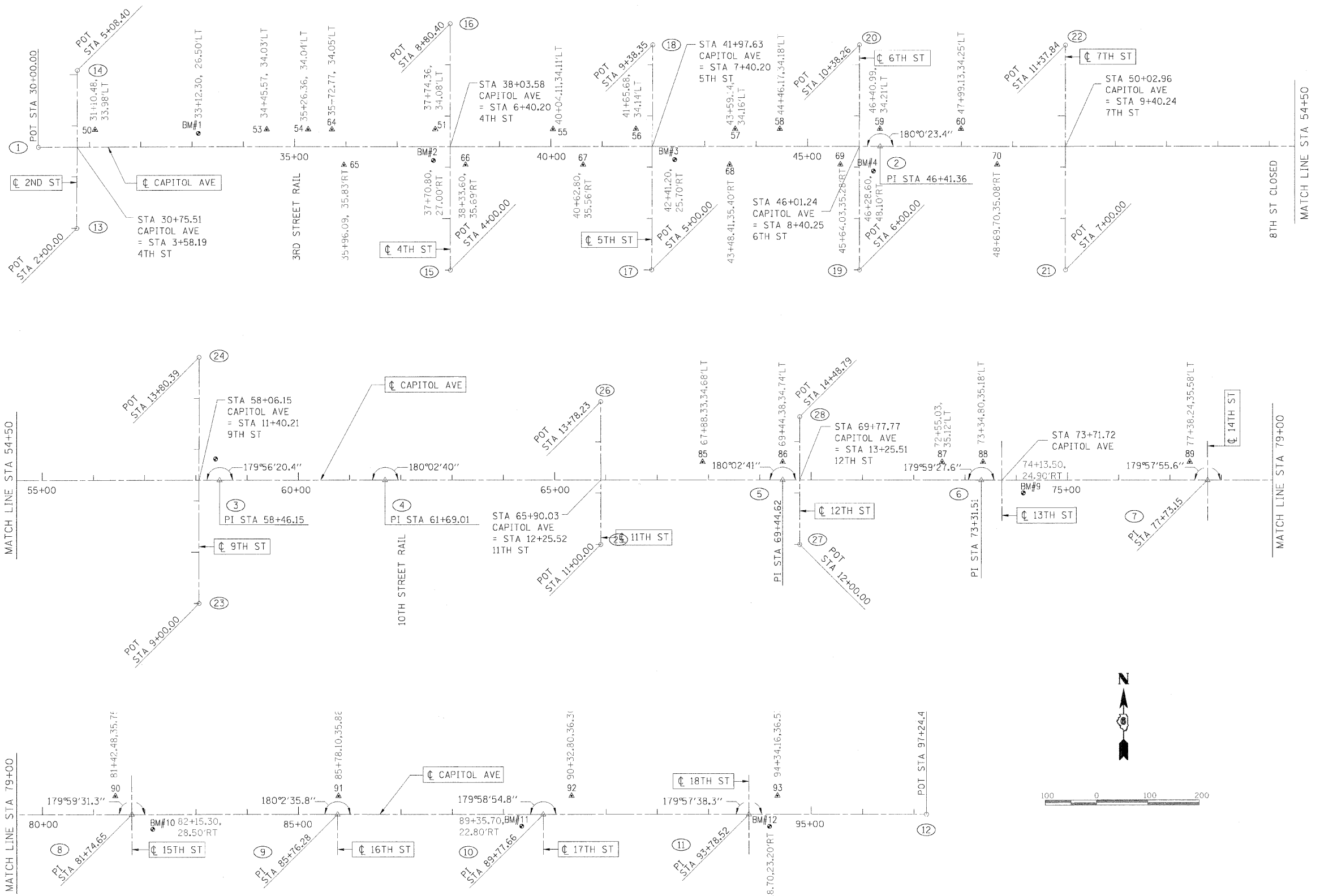
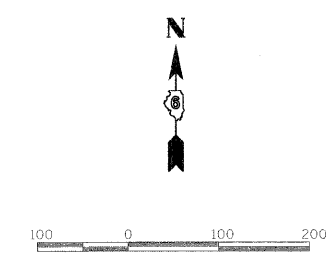


F.A.U. RTE.	SECTION	COUNTY	TOTAL SHEETS	SHEET NO.
7982		SANGAMON	68	20
STA.		TO STA.		
FED. ROAD DIST. NO.		ILLINOIS FED. AID PROJECT		
09-00447-03-PV		CITY OF SPRINGFIELD		



LOCATION POINTS & STREETS

POINT	NORTHING	EASTING
1	0.035	899.512
2	-0.206	2540.870
3	-0.520	3745.667
4	-0.260	4068.523
5	-0.239	4844.136
6	-0.531	5231.022
7	-0.796	5672.665
8	-0.794	6074.165
9	-0.737	6475.795
10	-0.983	6877.177
11	-1.101	7278.035
12	-0.966	7624.001
13	-158.160	974.127
14	150.234	975.875
15	-240.285	1702.978
16	240.115	1703.200
17	-240.339	2095.780
18	198.004	2098.268
19	-240.448	2500.613
20	197.813	2500.870
21	-240.537	2902.361
22	197.306	2902.572
23	-240.715	3705.594
24	239.674	3705.737
25	-125.767	4489.636
26	152.462	4489.435
27	-125.776	4877.318
28	123.012	4877.244



LEGEND
 61 = CONTROL POINT LOCATION & REFERENCE NUMBER.
 ▲ SEE CONTROL POINT TIES SHEET.

REVISIONS	
NAME	DATE

ILLINOIS DEPARTMENT OF TRANSPORTATION
 CENTERLINE GEOMETRICS
 FAU RTE 7982 CAPITOL AVE
 SEC NO. 09-00447-03-PV
 SANGAMON COUNTY, ILLINOIS
 SCALE: VERT. / HORIZ. / DATE 10/9/09
 DRAWN BY / CHECKED BY



LAYOUT: ZZZ 10/07/09
 DRAWN: ZZZ 10/07/09
 REVIEWED: WH 10/19/09
 PLOT DATE: 11/23/2009
 FILE NAME: I:\2009\09-00447-03-PV\Centerline\Sheet 20.dwg
 PLOT SCALE: 1/8"=1'-0"
 USER NAME: Hagan@HPS