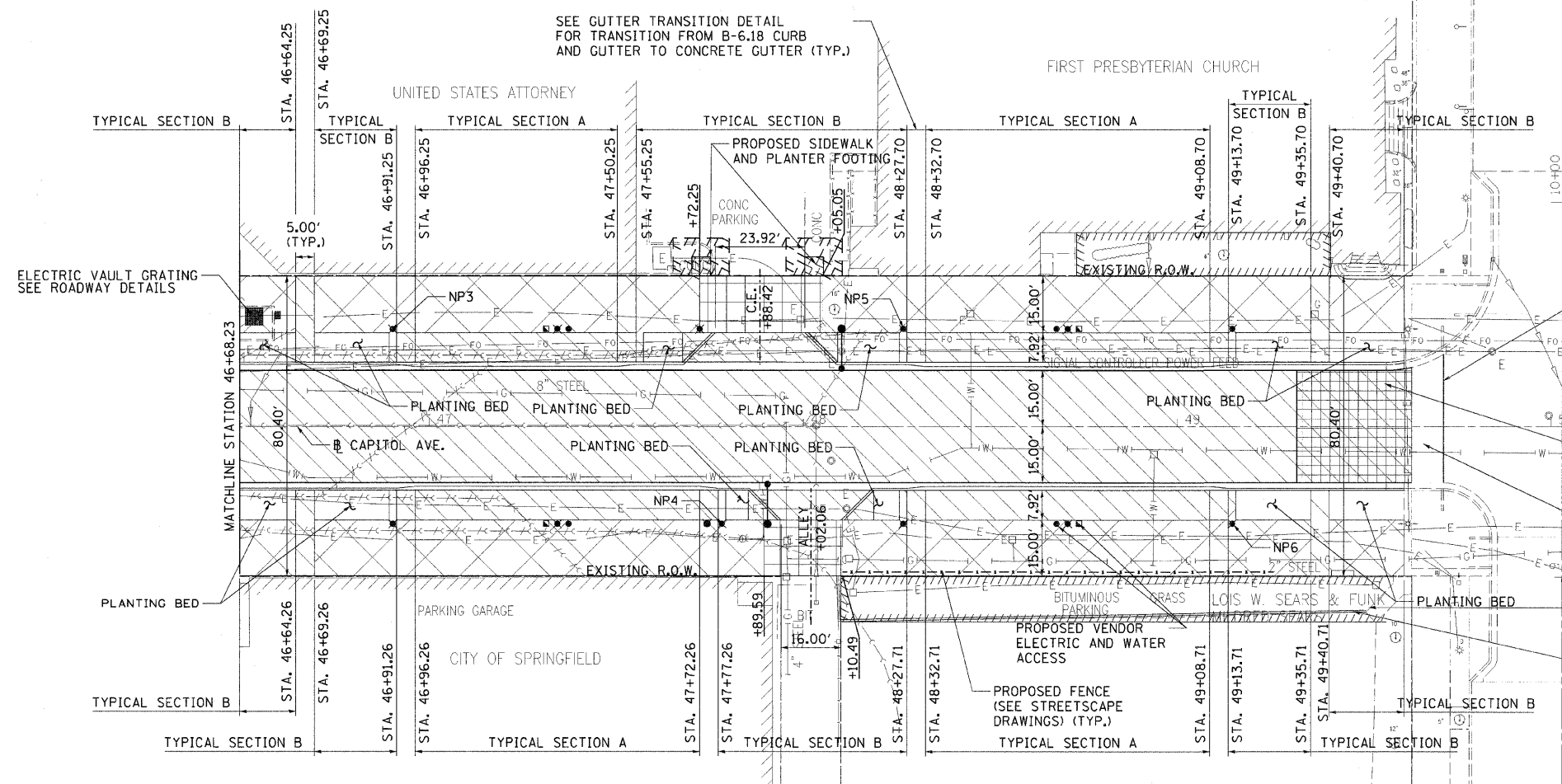
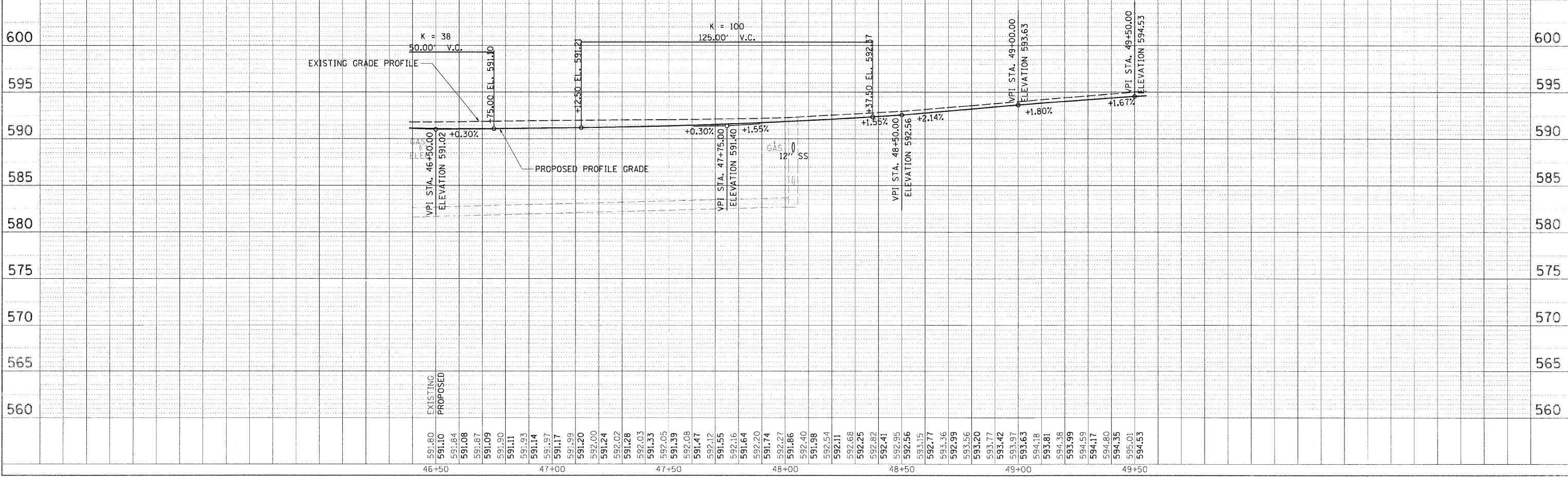


F.A.U. RITE	SECTION	COUNTY	TOTAL SHEETS	SHEET NO.
7982		SANGAMON	68	31
STA. _____		TO STA. _____		
FED. ROAD DIST. NO.		ILLINOIS	FED. AID PROJECT	
09-00447-03-FV		CITY OF SPRINGFIELD		

- LEGEND**
- PROPOSED CONCRETE PAVERS
SEE STREETScape PLANS
 - PROPOSED PCC SIDEWALK
 - PROPOSED PCC DRIVEWAY PAVEMENT
 - PROPOSED STREET LIGHT
 - PROPOSED PEDESTRIAN LIGHT
 - PROPOSED SIGNAGE LEGEND
 - LL - LOOKING FOR LINCOLN
 - NP - NO PARKING
 - OW - ONE WAY
 - S1 - STREET IDENTITY
 - SP - SPECIAL SIGN ASSEMBLY
 - GL - GRACE LUTHERAN



- SAW CUT EXISTING PAVEMENT EDGE TO ALIGN PAVERS FOR INSTALLATION WEST OF THE 7TH STREET INTERSECTION AS DIRECTED BY THE ENGINEER. THIS WORK SHALL BE INCLUDED IN THE COST FOR REMOVE AND REINSTALL EXISTING PAVERS.
- PREVIOUSLY CONSTRUCTED CONCRETE PAVEMENT TO EDGE OF EXISTING CROSSWALK
- REMOVE AND REINSTALL BRICK PAVERS IN EXISTING CROSSWALK
- GL1-11 USE EXISTING POSTS TO MOUNT SIGNS IN PROPOSED LOCATION
- CONCRETE CURB ALONG LANDSCAPING EASEMENT AND ASPHALT PARKING LOT/ALLEY



LAYOUT: ZZZ 03/07/07
 DRAWN: D.L.C. 03/15/07
 REVIEWED: M.T. 03/15/07
 DATE: 03/15/07
 SURVEYED: 03/15/07
 PLAN: 03/15/07
 CHECKED: 03/15/07
 DATE: 03/15/07
 FILE NAME: 112327899
 PLOT SCALE: 1/8" = 20'-0" (1/8" = 20'-0")
 USER NAME: P:\p09151



© Copyright Hanson Professional Services Inc. 2003